


# **Retainer Brite®**

## **Cleaning Foam**

Distributor: Dentsply Sirona  
Dentsply International Raintree Essix  
7290 26th Court East Sarasota, FL 34243 USA  
800-866-6884

 **Manufacturer: Eversmile, Inc.**  
10547 W. Pico Blvd. Los Angeles, CA 90064 USA

RTE-311-17 #RB-FDFU Rev. 01 12-2017

**Description:** Retainer Brite Cleaning Foam is a patented cleaning formulation designed to clean and freshen orthodontic aligners and clear retainers (appliances). Retainer Brite Cleaning Foam utilizes Anionic Technology powered by 3.8% hydrogen peroxide and kills 99.9% of bacteria.\*

**Ingredients:** water, hydrogen peroxide, glycerine, PVP, PEG, sodium lauryl sulfate, sucralose, sodium citrate, sodium benzoate, etidronic acid, mentha arvensis (mint) oil.

**Indications for Use:** Indicated for users of aligners and retainers who need to clean their appliances. The product is also indicated for tooth whitening.

**Warnings:**

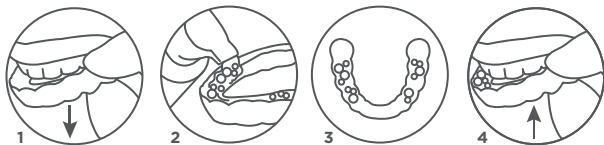
- If irritation (such as redness, swelling, soreness) of the gums or mouth occurs, discontinue use and consult a dentist.
- Adult supervision is required for use by children under 12.
- Avoid contact with eyes, skin or hair; flush with water if contact is made.
- Avoid swallowing; do not induce vomiting.
- Do not apply to gums or under tongue.
- Do not use if nursing or pregnant.
- Use only with orthodontic clear aligners, clear retainers and clear/hard mouth pieces.
- Prolonged use may require dentist supervision.

US Poison Control Center: (800) 222-1222. Australia Poisons Info Centre: 13 11 26. New Zealand Poisons Info Center: 0800 764 766. Canada Emergencies: 911. EU Poison Centres: echa.europa.eu

**Adverse Reactions:** Allergic reaction.

**Directions On-The-Go Tooth Whitening & Cleaning:**

1. Remove appliance.
2. Dispense one-half to one full pump of foam inside each appliance.
3. Spread foam evenly using a finger.
4. Place appliance back into your mouth and spit out excess foam.
5. Wipe off fingers. Use up to four times daily to whiten, clean, and freshen appliance and teeth.



**Directions Outside of Mouth Cleaning:**

1. Remove appliance
2. Place appliance inside storage case.
3. Cover appliance with foam and let sit for up to 5 minutes.
4. Rinsing and brushing appliances before replacing them in the mouth is optional.

**Storage Conditions:**

- Keep away from sunlight and heat as contents may pressurize.

\*S.aureus & E.coli, S.mutans, S. pneumoniae