

ANDREWS

A True Andrews Rx - incorporates his "Standard Rx" with the benefits of self-ligation. It works in conjunction with his six elements approach to diagnosis. It combines the elements of torque in base, precise in/out, and compound contour base configuration to achieve level slot alignment.

Maxillary				.018		.022	
Tooth	T	A	Of	Right	Left	Right	Left
U1	7	5	0	189-111-02	189-211-02	189-112-02	189-212-02
U2	3	9	0	189-121-02	189-221-02	189-122-02	189-222-02
U3/hk	-7	11	0	189-131-12	189-231-12	189-132-12	189-232-12
U4-5	-7	0	0	189-541-02	189-541-02	189-542-02	189-542-02

Mandibular							
Tooth	T	A	Of	Right	Left	Right	Left
L1-2	-1	0	0	189-611-02	189-611-02	189-612-02	189-612-02
L1-2/opt.	-6	2	0	189-311-22	189-411-22	189-312-22	189-412-22
L3/hk	-11	5	0	189-331-12	189-431-12	189-332-12	189-432-12
L4	-17	0	0	189-641-02	189-641-02	189-642-02	189-642-02
L5	-22	0	0	189-651-02	189-651-02	189-652-02	189-652-02

BI-DIMENSIONAL

The Bi-Dimensional Technique, as developed by Dr. Anthony Gianelly.

Maxillary				.018		.022	
Tooth	T	A	Of	Right	Left	Right	Left
U1	12	5	0	189-111-00	189-211-00		
U2	8	9	0	189-121-00	189-221-00		
U3/hk	0	7	0			189-132-41	189-232-41
U4-5	0	0	0			189-542-40	189-542-40
U4-5/hk	0	0	0			189-142-41	189-242-41

Mandibular							
Tooth	T	A	Of	Right	Left	Right	Left
L1-2	-1	0	0	189-611-02	189-611-02		
L3/hook	0	5	0			189-332-41	189-432-41
L4-5	0	0	0			189-642-40	189-642-40
L4-5/hk	0	0	0			189-342-41	189-442-41

SELF-LIGATING BUCCAL TUBES

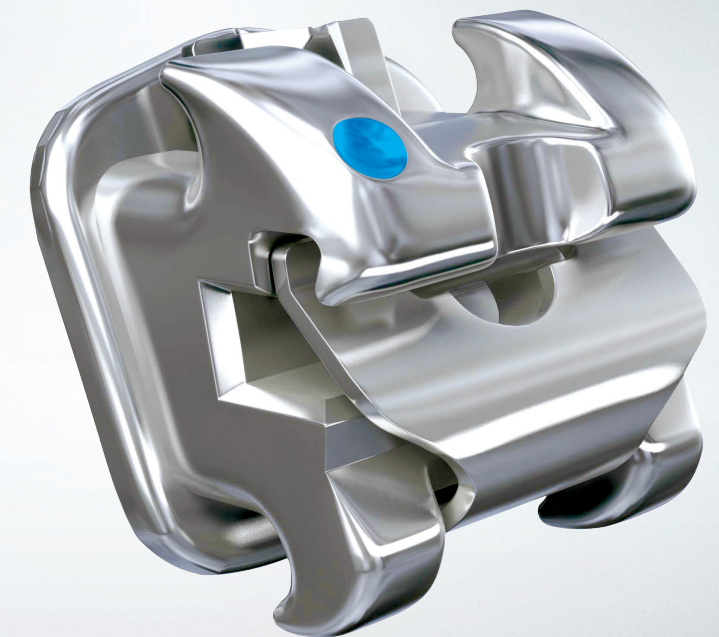
Maximize your In-Ovation treatment goals with In-Ovation self-ligating buccal tubes. They provide easy wire placement, quick snap closure and interactive technology.

Maxillary				.018		.022	
Tooth	T	A	Of	Right	Left	Right	Left
U6 Single	-10	0	14	88-161-05	88-261-05	88-162-05	88-262-05
U6 Single	-10	0	14	88-161-05RB	88-261-05RB	88-162-05RB	88-262-05RB
U6 Single	-10	0	14	87-161-05	87-261-05	87-162-05	87-262-05
U6 Single	-14	0	10	88-161-81	88-261-81	88-162-81	88-262-81
U6 Single	-14	0	10	88-161-81RB	88-261-81RB	88-162-81RB	88-262-81RB
U6 Single	-14	0	10	87-161-81	87-261-81	87-162-81	87-262-81
U6 Double	-20	0	20	88-161-62	88-261-62	88-162-62	88-262-62

Mandibular							
Tooth	T	A	Of	Right	Left	Right	Left
L6 Single	-25	0	4	88-361-09	88-461-09	88-362-09	88-462-09
6 Single	-25	0	4	88-361-09RB	88-461-09RB	88-362-09RB	88-462-09RB
6 Single	-25	0	4	87-361-09	87-461-09	87-362-09	87-462-09
L6 Single	-20	0	0	88-361-81	88-461-81	88-362-81	88-462-81
L6 Single	-20	0	0	88-361-81RB	88-461-81RB	88-362-81RB	88-462-81RB
L6 Single	-20	0	0	87-361-81	87-461-81	87-362-81	87-462-81
L6 Single	-14	0	4	88-361-62	88-461-62	88-362-62	88-462-62
L6 Double	-10	0	4	88-361-08	88-461-08	88-362-08	88-462-08



In-Ovation® R by GAC Self-Ligating Brackets



The Dental Solutions Company

Dentsply Sirona is the world's largest manufacturer of professional dental products and technologies. We create industry-leading positions and platforms across consumables, equipment, technology, and specialty products. We are committed to introducing new, innovative products and complementary, end-to-end solutions to drive better, safer and faster dentistry.

To learn more, visit us online at dentsplysirona.com.



Dentsply GAC International
One CA Plaza, Suite 100
Islandia, NY 11749

©2017 Dentsply Sirona
All Rights Reserved
0280-MM-120-089-06 Rev. 06



In-Ovation® R by GAC Self-Ligating Brackets

Comprehensive Prescription Guide

Whatever Your Treatment Goals, There's an In-Ovation R Prescription to Fill it!

There's a reason 52 million In-Ovation R brackets have been placed on over two million patients. In-Ovation R can offer you the confidence that comes from a decade of leadership, backed by the manufacturing expertise and the established reputation of the Dentsply Sirona Orthodontics name.

- Treatment precision—start to finish—guided by the In-Ovation R interactive controls.
- True straight-wire design for predictable outcomes.
- Unmatched quality control for products that deliver consistent, repeatable results.

BASE

Base Prescription
Dentsply Sirona Orthodontics Base Rx has prescription values that are equivalent to the Roth prescription. ROTH is a registered trademark of Roth Licensing, LLC. All rights reserved.

Maxillary Tooth				.018		.022	
	T	A	Of	Right	Left	Right	Left
U1	12	5	0	189-111-00	189-211-00	189-112-00	189-212-00
U1/htq	17	5	0	189-111-01	189-211-01		
U2	8	9	0	189-121-00	189-221-00	189-122-00	189-222-00
U2/hk	8	9	0	189-121-10	189-221-10	189-122-10	189-222-10
U3	-2	13	4M	189-131-00	189-231-00	189-132-00	189-232-00
U3/hk	-2	13	4M	189-131-10	189-231-10	189-132-10	189-232-10
U3/sp	-2	10	4M	189-131-06	189-231-06	189-132-06	189-232-06
U3/hk sp	-2	10	4M	189-131-16	189-231-16	189-132-16	189-232-16
U4-5	-7	0	2D	189-141-00	189-241-00	189-142-00	189-242-00
U4-5/hkd	-7	0	2D	189-141-10	189-241-10	189-142-10	189-242-10
U4-5/hkm	-7	0	2D	189-141-90	189-241-90	189-142-90	189-242-90
U4-5/hk w	-7	0	2D	87-141-10	87-241-10	87-142-10	87-242-10
U4-5/hk w	-7	0	2D	87-141-90	87-241-90	87-142-90	87-242-90

Mandibular Tooth							
	T	A	Of	Right	Left	Right	Left
L1-2	-1	2	0	189-311-00	189-411-00	189-312-00	189-412-00
L2/hk	-1	2	0			189-322-10	189-422-10
L3	-11	7	2M	189-331-00	189-431-00	189-332-00	189-432-00
L3/hk	-11	7	2M	189-331-10	189-431-10	189-332-10	189-432-10
L4	-17	-1	4D	189-341-00	189-441-00	189-342-00	189-442-00
L4/hk	-17	-1	4D	189-341-10	189-441-10	189-342-10	189-442-10
L4/ob	-17	-1	4D	189-341-08	189-441-08	189-342-08	189-442-08
L4/hk w	-17	1	4D	87-341-10	87-441-10	87-342-10	87-442-10
L5	-22	-1	4D	189-351-00	189-451-00	189-352-00	189-452-00
L5/hk	-22	-1	4D	189-351-10	189-451-10	189-352-10	189-452-10
L5/ob	-22	-1	4D	189-351-08	189-451-08	189-352-08	189-452-08
L5/hk w	-22	-1	4D	87-351-10	87-451-10	87-352-10	87-452-10

CCO

The CCO System is a comprehensive treatment philosophy designed to treat each and every case with goal directed treatment and pre-visualized results. The CCO Rx was developed to take full advantage of the bracket/archwire interaction when using an active clip and to achieve optimal tooth position at the end of treatment.

Maxillary Tooth				.018		.022	
	T	A	Of	Right	Left	Right	Left
U1	12	5	0	189-111-07	189-211-07	189-112-07	189-212-07
U1/ltq	7	5	0	189-111-08	189-211-08	189-112-08	189-212-08
U2	10	9	0	189-121-07	189-221-07	189-122-07	189-222-07
U2/ltq	3	9	0	189-121-08	189-221-08	189-122-08	189-222-08
U3/hk	-7	10	2M	189-131-17	189-231-17	189-132-17	189-232-17
U3/hk ltq	0	10	2M	189-131-18	189-231-18	189-132-18	189-232-18
U4, U5	-9	0	0	189-541-07	189-541-07	189-542-07	189-542-07
U4-5/hk	-9	0	0	189-141-17	189-241-17	189-142-17	189-242-17

Mandibular Tooth							
	T	A	Of	Right	Left	Right	Left
L1-2	-6	0	0	189-611-08	189-611-08	189-612-08	189-612-08
L1-2/ht	-1	0	0	189-611-07	189-611-07	189-612-07	189-612-07
L3/hk	-8	3	0	189-331-17	189-431-17	189-332-17	189-432-17
L4	-12	2	0	189-341-07	189-441-07	189-342-07	189-442-07
L4/hk	-12	2	0	189-341-17	189-441-17	189-342-17	189-442-17
L5	-17	-1	0	189-351-07	189-451-07	189-352-07	189-452-07
L5/hk	-17	-1	0	189-351-17	189-451-17	189-352-17	189-452-17

RONCONE

In-Ovation R Roncone prescription features increased torque in the maxillary incisors and upper premolars, and reduced mandibular posterior torque. The prescription is based on the JSOP philosophy developed by Dr. Roncone.

Maxillary Tooth				.018		.022	
	T	A	Of	Right	Left	Right	Left
U1	18	5	0	189-111-60	189-211-60	189-112-60	189-212-60
U2	10	8	0	189-121-60	189-221-60	189-122-60	189-222-60
U2/hk	10	8	0	189-121-61	189-221-61	189-122-61	189-222-61
U3	0	8	2M	189-131-60	189-231-60	189-132-60	189-232-60
U3/hk	0	8	2M	189-131-61	189-231-61	189-132-61	189-232-61
U4-5	-10	4	2D	189-141-60	189-241-60	189-142-60	189-242-60
U4-5/hk	-10	4	2D	189-141-61	189-241-61	189-142-61	189-242-61

Mandibular Tooth							
	T	A	Of	Right	Left	Right	Left
L1-2	1	0	0	189-611-60	189-611-60	189-612-60	189-612-60
L3	-3	7	2M	189-331-60	189-431-60	189-332-60	189-432-60
L3/hk	-3	7	2M	189-331-61	189-431-61	189-332-61	189-432-61
L4-5	-7	-1	2D	189-341-60	189-441-60	189-342-60	189-442-60
L4-5/hk	-7	-1	2D	189-341-61	189-441-61	189-342-61	189-442-61

EURO

Euro Rx has prescription values that are equivalent to the MBT™ prescription.

Maxillary Tooth				.018		.022	
	T	A	Of	Right	Left	Right	Left
U1	17	4	0	189-111-80	189-211-80	189-112-80	189-212-80
U2	10	8	0	189-121-80	189-221-80	189-122-80	189-222-80
U3	-7	8	0	189-131-80	189-231-80	189-132-80	189-232-80
U3/hk	-7	8	0	189-131-81	189-231-81	189-132-81	189-232-81
U3/hk	0	8	0	189-131-82	189-231-82	189-132-82	189-232-82
U4	-7	0	0	189-541-80	189-541-80	189-542-80	189-542-80
U4/hk	-7	0	0	189-141-81	189-241-81	189-142-81	189-242-81
U5	-7	0	0	189-551-80	189-551-80	189-542-80	189-542-80
U5/hk	-7	0	0	189-151-81	189-251-81	189-152-81	189-252-81

Mandibular Tooth							
	T	A	Of	Right	Left	Right	Left
L1-2	-6	0	0	189-611-80	189-611-80	189-612-80	189-612-80
L3	-6	3	0	189-331-80	189-431-80	189-332-80	189-432-80
L3/hk	-6	3	0	189-331-81	189-431-81	189-332-81	189-432-81
L3/hk	0	3	0	189-331-82	189-431-82	189-332-82	189-432-82
L4	-12	2	0	189-341-80	189-441-80	189-342-80	189-442-80
L4/hk	-12	2	0	189-341-81	189-441-81	189-342-81	189-442-81
L5	-17	2	0	189-351-80	189-451-80	189-352-80	189-452-80
L5/hk	-17	2	0	189-351-81	189-451-81	189-352-81	189-452-81

* MBT is a registered trademark of 3M Unitek. All rights reserved.

CETLIN/GREENFIELD

The CG prescription was developed by Dr. Cetlin and Dr. Greenfield to reflect the goals of "Coordinated Arch Development™,"—their unique approach to nonextraction therapy. Buccal root torque in the mandibular posterior teeth has been decreased, while the buccal root torque in the maxillary posterior teeth has been increased.

Maxillary Tooth				.018		.022	
	T	A	Of	Right	Left	Right	Left
U1	24	5	0	189-111-03	189-211-03	189-112-03	189-212-03
U2	16	8	0	189-121-03	189-221-03	189-122-03	189-222-03
U3/hk	0	10	0	189-131-13	189-231-13	189-132-13	189-232-13
U4-5	-7	0	0	189-541-03	189-541-03	189-542-03	189-542-03
U4-5/hk	-7	0	0	189-141-13	189-241-13	189-142-13	189-242-13

Mandibular Tooth							
	T	A	Of	Right	Left	Right	Left
L1-2	-6	0	0	189-611-03	189-611-03	189-612-03	189-612-03
L3/hk	-7	5	0	189-331-13	189-431-13	189-332-13	189-432-13
L4	-11	0	0	189-641-03	189-641-03	189-642-03	189-642-03
L4/hk	-11	0	0	189-341-13	189-441-13	189-342-13	189-442-13
L5	-15	0	0	189-651-03	189-651-03	189-652-03	189-652-03
L5/hk	-15	0	0	189-351-13	189-451-13	189-352-13	189-452-13

