

## New inLab Software 22.0: Widens production range; integrates CEREC Primemill; streamlines workflows.

**Dentsply Sirona announces the latest inLab Software 22.0. Its CAD and CAM applications offer users a harmonized new user interface at a design and manufacturing level, additional design options and extended connectivity to CEREC Primemill. For the first time, this fast milling and grinding unit can now be incorporated into the inLab workflow. This gives users great and also flexible machine connectivity—whether they use Dentsply Sirona solutions or other CAD/CAM systems.**

**Charlotte/Bensheim, April 27, 2022.** inLab Software 22.0 will make digital manufacturing of dental restorations convenient and flexible. A full version of the inLab Software 22.0 is available from Dentsply Sirona for new and existing customers. Its range of new features include indication extensions, as well as a new, harmonized user interface for a modern look and for an easy and seamless transition to other DS software products.

inLab CAD Software 22.0 follows in the footsteps of Dentsply Sirona's already successfully established solution for digitally manufactured full dentures. The software offers the extension for full-over-natural dentures (single arch denture), optimizes gingiva designs and integrates new Digital Genios and Digital Portrait tooth libraries from Dentsply Sirona used in milling and 3D print production.

For the first time, the new software can now support the design and manufacturing of a CEREC Guide 3 surgical guide in a completely improved workflow, as well as the implant supported restoration design for DS PrimeTaper implant system.

### More options in manufacturing

One major innovation is the possibility to integrate CEREC Primemill into the digital production processes of labs and dental practices. This easily leads to fast milling results with high levels of accuracy. inLab CAD SW 22.0 users benefit from a design and manufacturing workflow that adjusts to the machine's parameters. Users of other CAD/CAM manufacturing systems can also flexibly integrate CEREC Primemill via the open inLab CAM Software 22.0.\*

"The connection of CEREC Primemill to the open inLab CAM Software opens up additional performance potential for me in the lab, not only with respect to the super-fast milling of zirconia or the extra-fine grinding of glass-ceramics, but also in terms of the ability to process restoration data from other CAD software. With the 0.5 milling tools, I achieve very good surfaces in a short time. I really enjoy using the Primemill," said Jens

## Press Contact

Julia Schröder  
Edelman GmbH  
Schöneberger Straße 15  
D-10963 Berlin, Germany  
T +49 (0) 30 2218290-19  
[dentsplysirona@edelman.com](mailto:dentsplysirona@edelman.com)  
[www.edelman.com](http://www.edelman.com)

Marion Par-Weixlberger  
Vice President Public Relations &  
Corporate Communications  
Sirona Straße 1  
5071 Wals bei Salzburg, Austria  
T +43 (0) 662 2450-588  
F +43 (0) 662 2450-540  
[marion.par-weixlberger@dentsplysirona.com](mailto:marion.par-weixlberger@dentsplysirona.com)

### About Dentsply Sirona:

Dentsply Sirona is the world's largest manufacturer of professional dental products and technologies, with over a century of innovation and service to the dental industry and patients worldwide. Dentsply Sirona develops, manufactures, and markets a comprehensive solutions offering including dental and oral health products as well as other consumable medical devices under a strong portfolio of world class brands. Dentsply Sirona's products provide innovative, high-quality and effective solutions to advance patient care and deliver better and safer dental care. Dentsply Sirona's headquarter is located in Charlotte, North Carolina. The company's shares are listed in the United States on NASDAQ under the symbol XRAY.

Visit  
[www.dentsplysirona.com](http://www.dentsplysirona.com)  
for more information about Dentsply Sirona and its products.

Richter, dental technician, Zahntechnik Kerstin Strassburger in Rochlitz, Germany.

With the installation of inLab CAM Software 22.0, the new inLab CAM service is available for the first time. The database provides central management and storage of production data for Dentsply Sirona production units connected to the local network. This allows for improved data that's up to date and more secure when data processing.

inLab CAM Software is set to become an integral part of Dentsply Sirona's most recently announced device Primeprint Solution—a professional 3D printing solution that helps dental professionals produce a range of medical applications.

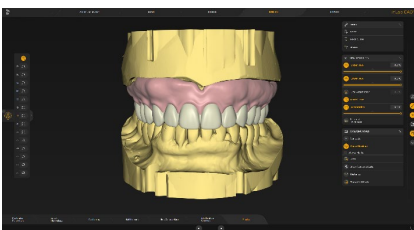
inLab CAD SW 22.0 and inLab CAM SW 22.0 are available online as full versions. inLab users and new customers can reach out to their point of contact in the regional sales organizations to purchase full licenses and/or updates.

*\* Dentsply Sirona rejects liability for all possible risks to the user, third parties and the production device itself with all associated components when processing designs based on \*.stl file format.*

*Due to different approval and registration times, not all solutions and products are available in all countries.*

## IMAGES

are available for [> download](#) on the website.



*Fig. 1: inLab Software 22 expands its field of application in the laboratory, such as the extension of digital denture design to single-arch dentures.*



*Fig. 2: Support for CERIC Primemill in the inLab CAM Software 22 opens up additional milling and grinding options in the lab.*

