



Lucitone Digital Print Denture™ System Certification Program

We are excited to partner with you to certify your lab for the Lucitone Digital Print Denture System.

Complete the following three steps for lab certification:

1. Complete the Self-study Syllabus (below).
2. Submit a full-over-full sample case including an upper and lower try-in and an upper and lower final denture using Dentsply Sirona print files.
 - Request print files: dsdigitaldentures@dentsplysirona.com.
 - Email photos of the final appliances and your laboratory contact information to dsdigitaldentures@dentsplysirona.com.
 - Dentsply Sirona will email a knowledge-check link following the receipt of the appliance photos.
3. Complete the 20-question knowledge check (true or false and multiple choice questions).
 - A minimum score of 80% is required for lab certification.

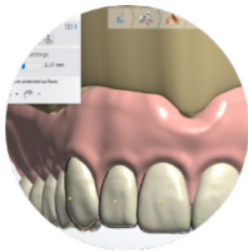
Following the successful completion of the lab certification steps, you will receive:

- The Certified Lucitone Digital Print Denture Laboratory digital logo.
 - A social media package including images and a certification announcement.
 - 16 NBC credit hours*
- *Available in the U.S.A. only

For questions or assistance, please contact Technical Support @800-243-1942, ext. 54212 or dsdigitaldentures@dentsplysirona.com.

Self-study Syllabus

Visit the Lucitone Digital Print Denture System: Learning Curriculum page at <https://www.dentsplysirona.com/en-us/categories/lab/lucitone-curriculum.html> and navigate the workflow steps and content.



Design



Print & Recycle



Clean



Fuse & Cure



Finish

Design	<ul style="list-style-type: none"> • Review the design video & downloads 	<input type="checkbox"/> Complete
Print & Recycle	<ul style="list-style-type: none"> • Review the videos and downloads for your applicable printer 	<input type="checkbox"/> Complete
Clean	<ul style="list-style-type: none"> • Review the clean process video • Review the clean section in the Illustrated Technique Guide for your applicable printer 	<input type="checkbox"/> Complete
Fuse & Cure	<ul style="list-style-type: none"> • Review the fuse & cure process videos and downloads • Review the fuse & cure sections in the Illustrated Technique Guide for your applicable printer 	<input type="checkbox"/> Complete
Finish	<ul style="list-style-type: none"> • Review the finish video • Review the finish section in the Illustrated Technique Guide for your applicable printer 	<input type="checkbox"/> Complete