



GuttaCore®

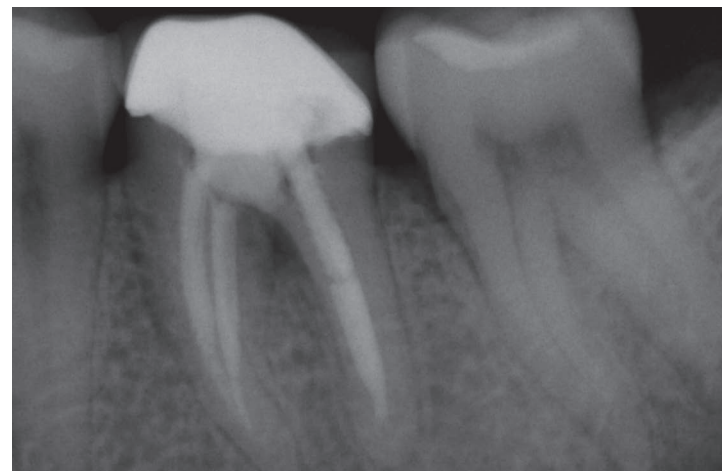
Travel challenging canals  
with confidence

# The cold truth about gaps and voids

You need your gutta-percha to go the distance — in every case. Yet cold lateral techniques can leave voids in intricate areas. And warm vertical techniques can fail to warm the all-important last 3-5 mm of the master cone.

The technique: *Cold Lateral*

Where it stops short: *Void-Free Fills*



Obturated with cold lateral technique as seen before retreatment.



Gaps between cold gutta-percha cones can harbor harmful bacteria.

Photos courtesy of Dr. William Nudera and Dr. Ben Johnson

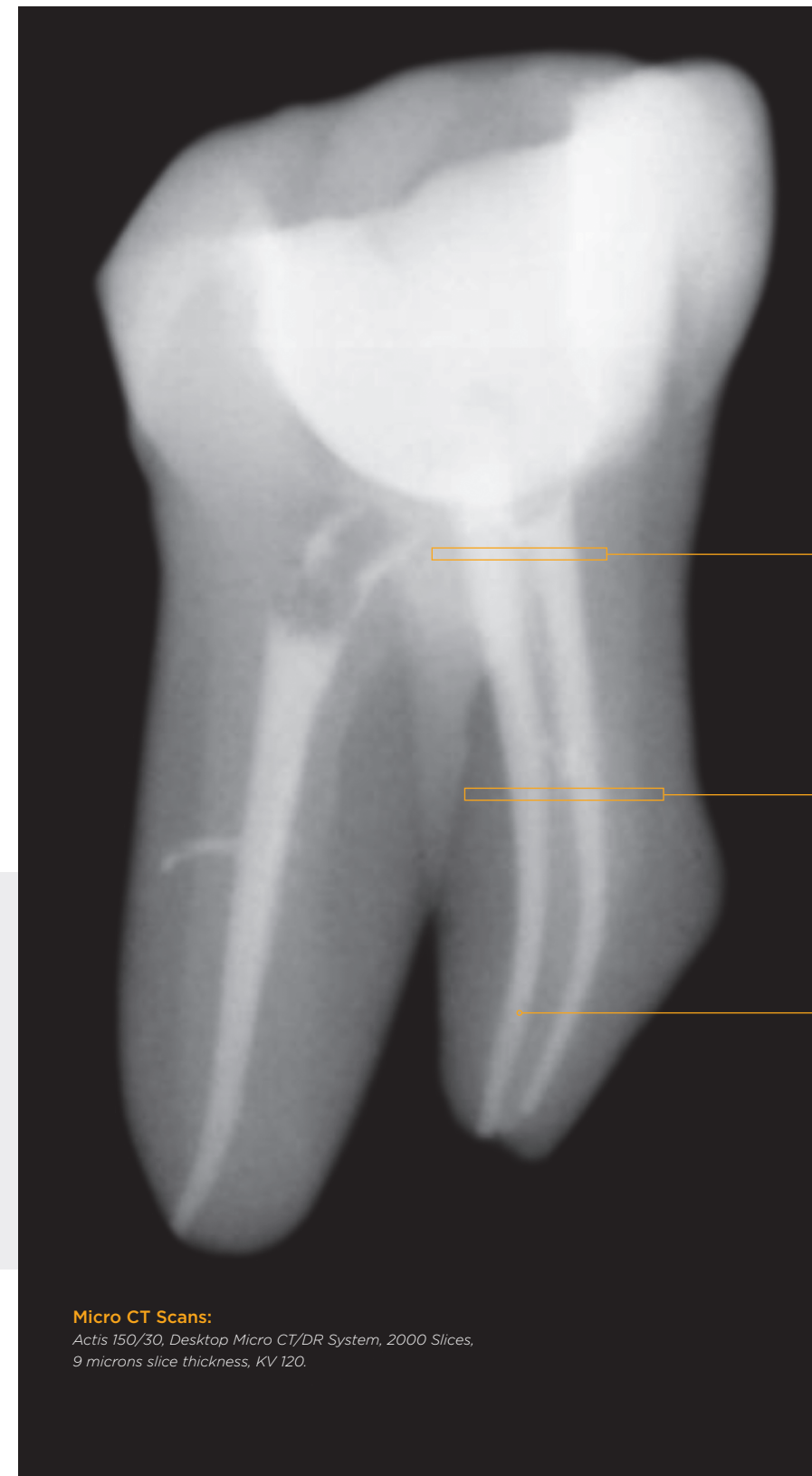


Voids are clearly visible between the compacted gutta-percha cones.

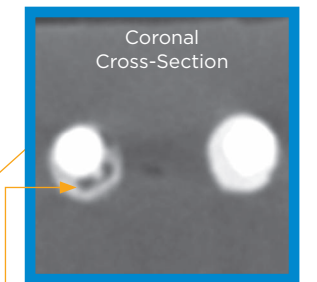
# What your radiograph is missing

The technique: *Single Cone*

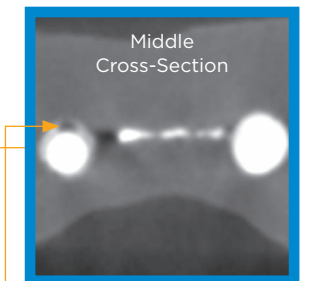
Where it stops short: *Multiple Apices*



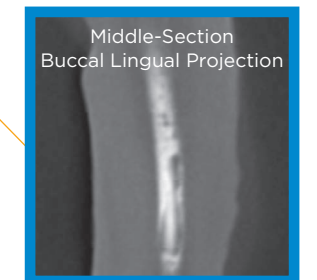
A single cold gutta-percha cone doesn't reach all points of exit.



Single cone: large voids.



Single cone: note another void and empty fin.



Note the multiple voids that remain with the single cone system. No monobloc is created in the ML canal.

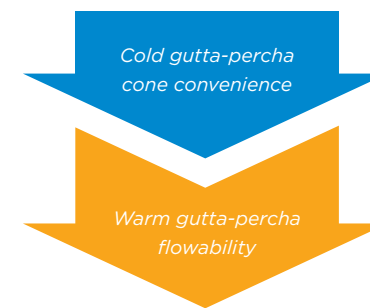
**Micro CT Scans:**

Actis 150/30, Desktop Micro CT/DR System, 2000 Slices, 9 microns slice thickness, KV 120.



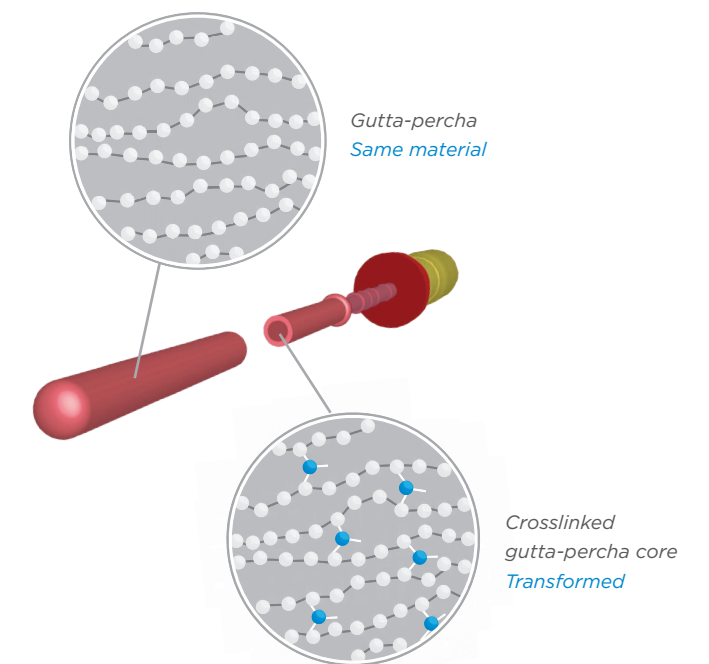
GuttaCore®

## Cold gutta-percha cone convenience, warm fill confidence



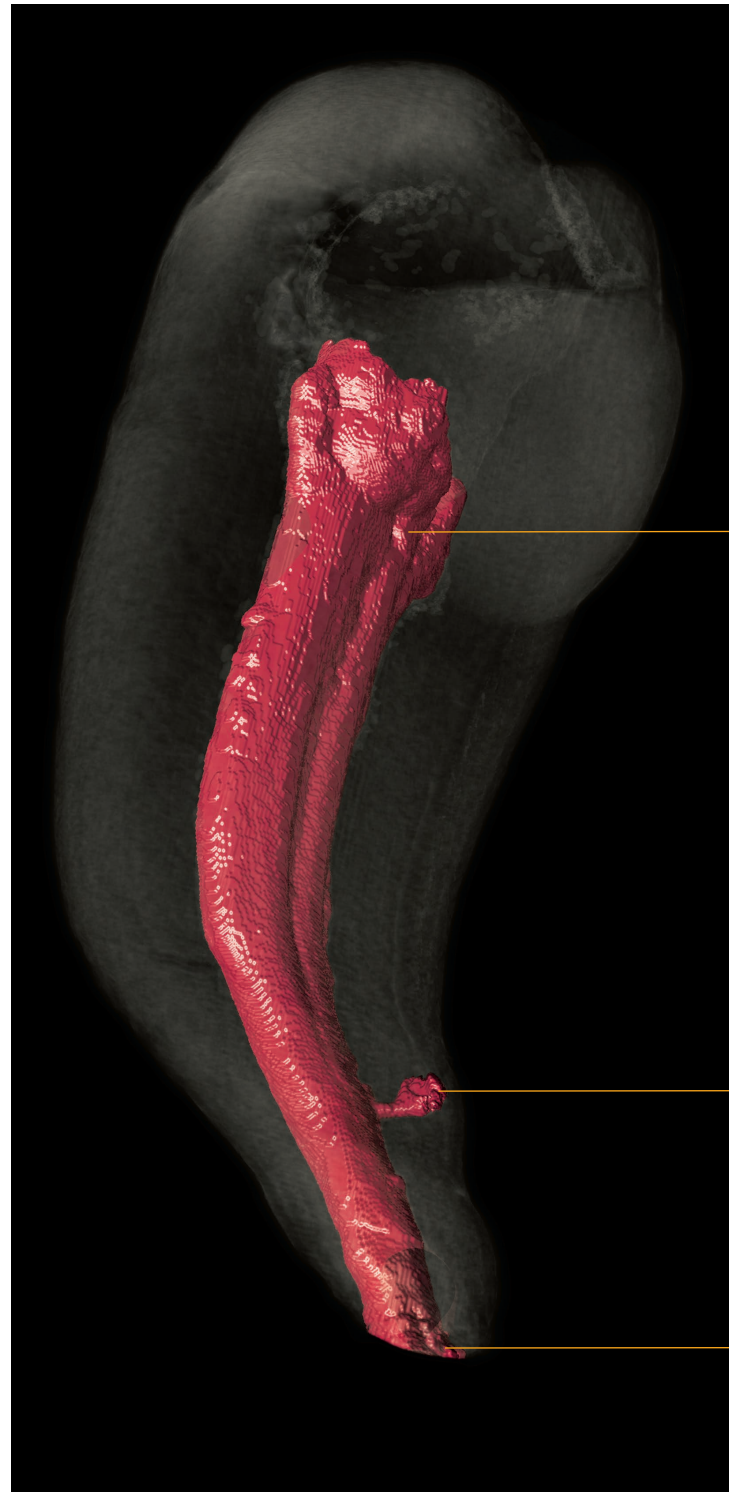
GuttaCore obturators feature a crosslinked gutta-percha core that sends the surrounding warm, flowable gutta-percha three-dimensionally to follow the natural canal anatomy.

- An efficient technique that offers the ease of a single insertion, so your patients spend less time in your chair.
- The flowability of warm gutta-percha to achieve a complete fill throughout the canal system.
- The confidence of knowing GuttaCore travels where traditional cold gutta-percha stops short.



# The hydraulics advantage

Many obturation techniques use lateral or vertical compaction of gutta-percha. However, the hydraulic force from these techniques generally moves gutta-percha in one or two unequal directions (laterally or apically). GuttaCore® is different. Its crosslinked gutta-percha core centrally compacts the gutta-percha with a hydraulic force that sends it flowing equally in three dimensions - throughout the entire canal system. It removes easily, too.



Micro CT scan reveals the true canal complexity of the root canal system.

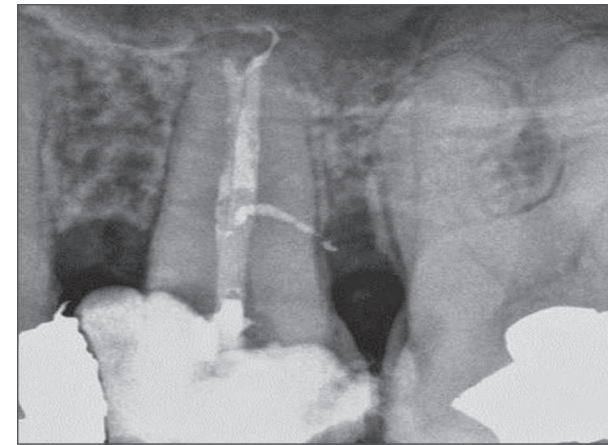
Flows into the canal shape of this confluent root canal system.

Fills isthmuses, lateral and accessory canals.

Delivers warm gutta-percha beyond challenging curves and into the apex.

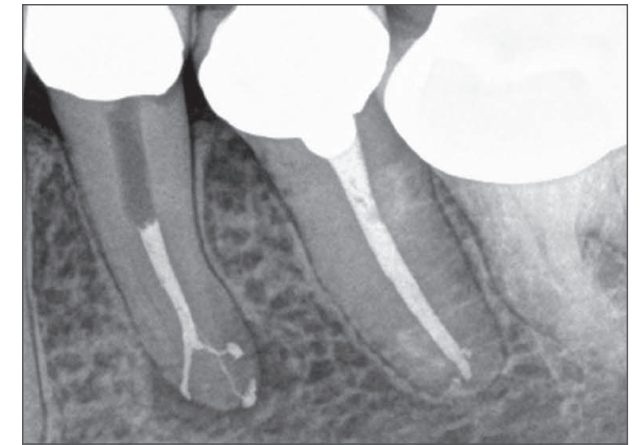
# GuttaCore® performance, case after case

The ability of GuttaCore to follow the natural canal anatomy lets you obturate even challenging cases with confidence.



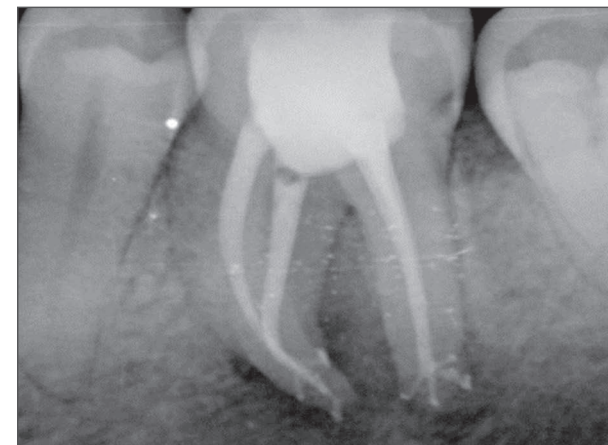
"GuttaCore flowed into the lateral canal space, an area that cold gutta-percha would have missed."

Dr. Brian McCormack, Stony Brook, NY



"I know gutta-percha is flowing everywhere it needs to, down to the apical third. This case included three portals of exit."

Dr. Shawn Velez, Aiken, SC



"How could a single cone of gutta-percha fill so many portals of exit? This is why I feel more confident using GuttaCore."

Dr. Bhairavi Parekh, Waterford, MI

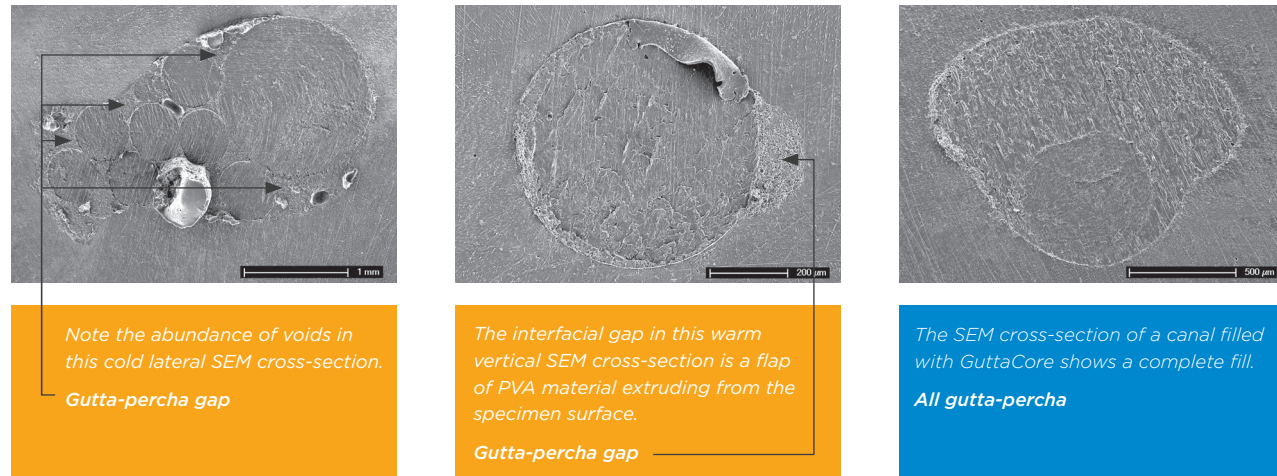


"Even around curves, you can see how GuttaCore fills all the areas of the apical anatomy."

Dr. Munir Battikhi, Minneapolis, MN

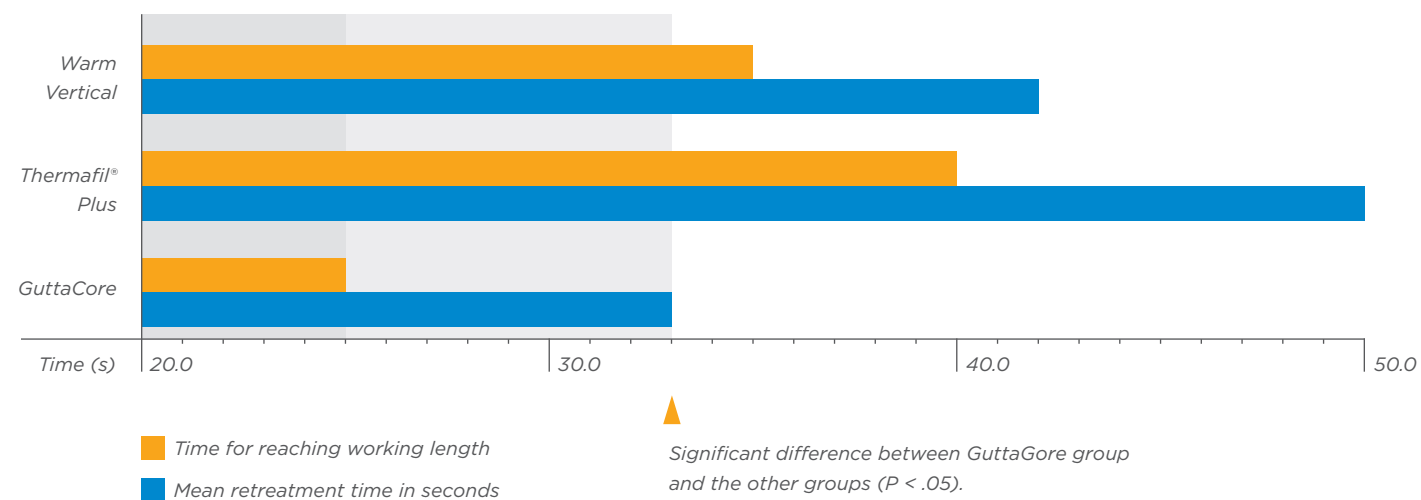
# GuttaCore® fills the entire canal anatomy

Scientific studies show the effectiveness of GuttaCore compared to other techniques in achieving a complete fill throughout the canal system. GuttaCore delivers the highest gutta-percha content with fewer apical and coronal voids than cold lateral techniques.<sup>1</sup>



Images courtesy of Dr. Franklin R. Tay

## Easy removal. Easy post space creation.

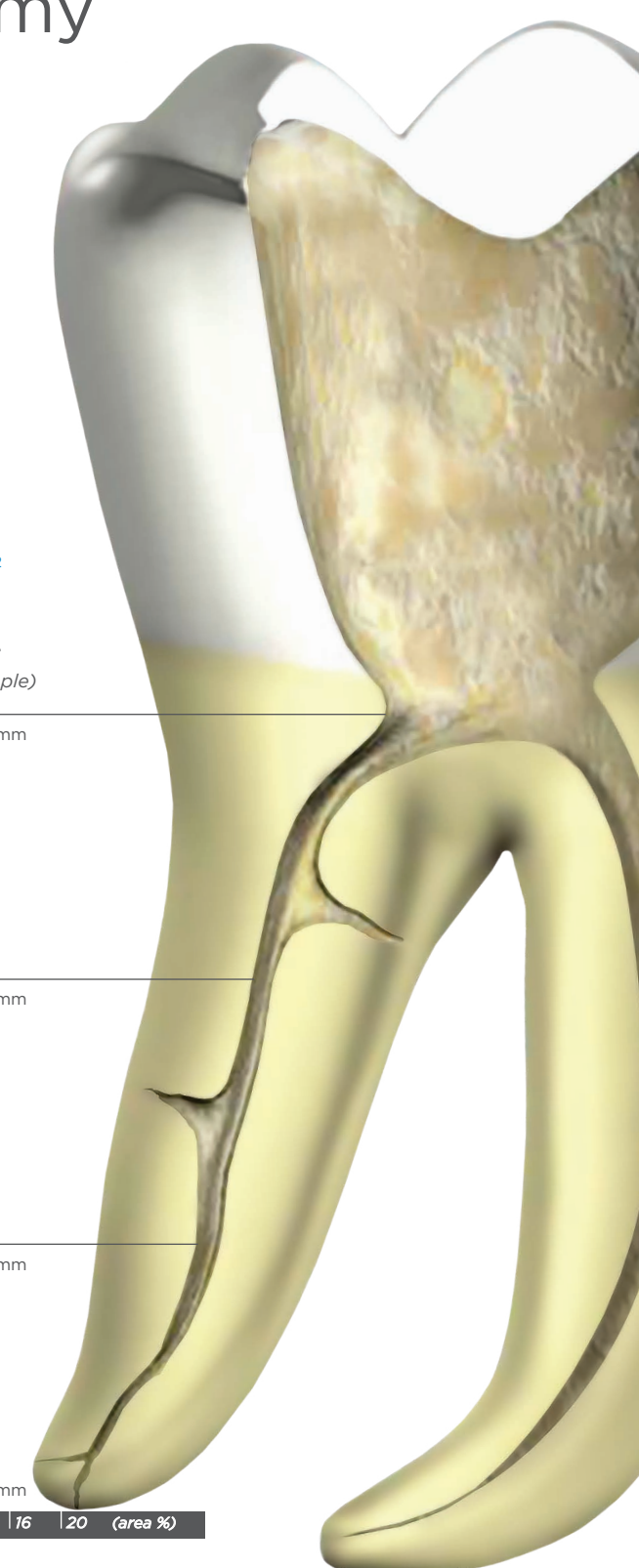
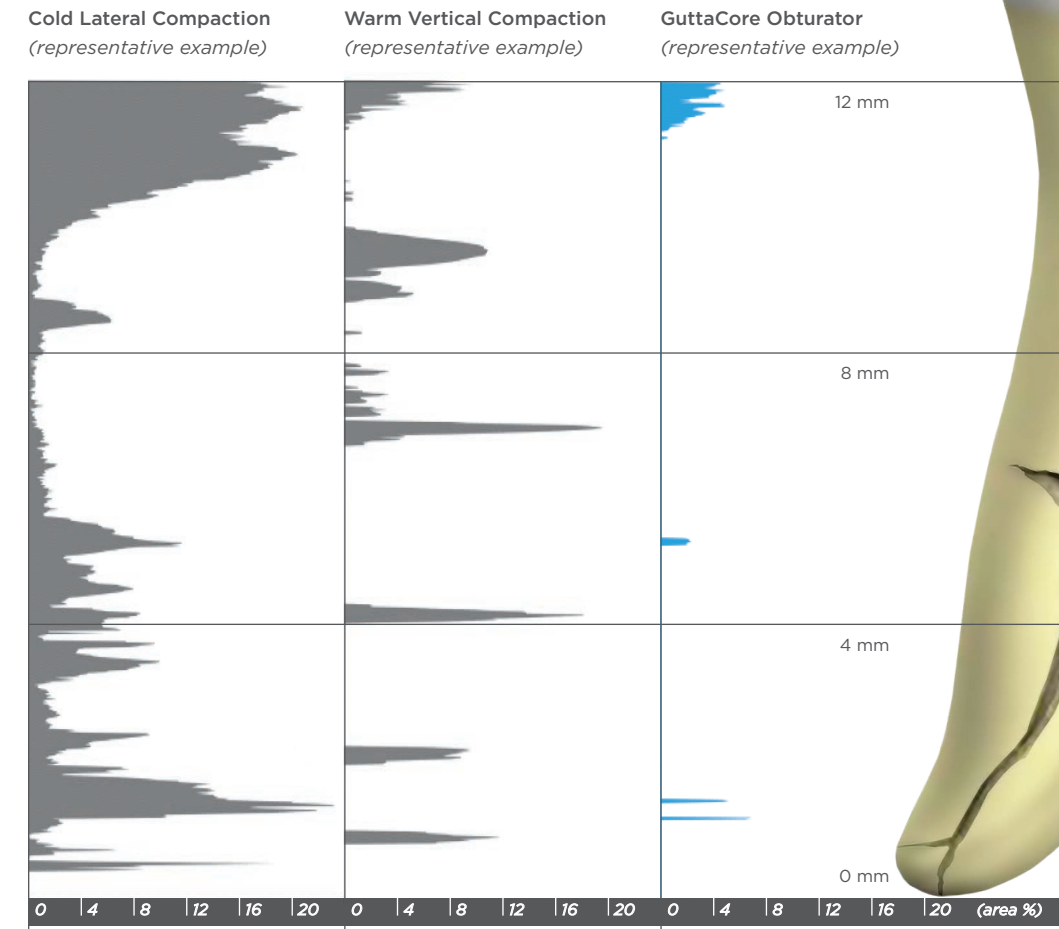


1. Quality of obturation achieved by an endodontic core-carrier system with crosslinked gutta-percha carrier in single-rooted canals.; Li GH et al., J Dent. 2014, 42(9): 1124-1134

# GuttaCore® adapts better to intricate canal anatomy<sup>2</sup>

To achieve apical adaptation of the master cone, warm vertical techniques must be 3-5 mm from the working length.<sup>3</sup> Yet thermal penetration of the gutta-percha was limited – with significant thermal effect rarely exhibited more than 4-6 mm into the material.<sup>2</sup>

## Comparison of the amount of voids and gaps along the length of the canal left by other obturation techniques versus GuttaCore® (right).<sup>2</sup>



2. Effect of varying the depth of heat application on the adaptability of gutta-percha during warm vertical compaction.; Smith RS, et al. JOE. 2000, 26(11):668-72  
3. Analysis of continuous-wave obturation using a single-cone and hybrid technique.; Guess GM et al., JOE. 2003, 29(8):509-12

# Confidence to the end

Whether you perform one root canal treatment per month or one per hour, it's all about having confidence in your technique. GuttaCore® gives you that confidence with its warm gutta-percha that you send flowing three-dimensionally throughout the entire canal system with the ease of a single insertion. Create a better obturation experience compared to cold lateral or warm vertical techniques for you and your patients with GuttaCore.

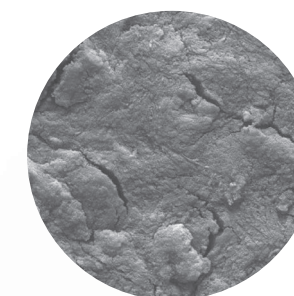
# A complete clean for a complete fill



To ensure GuttaCore® is free to flow into intricate canal anatomies, remove debris and smear layer with QMix® 2in1 Irrigating Solution activated with the EndoActivator® System.

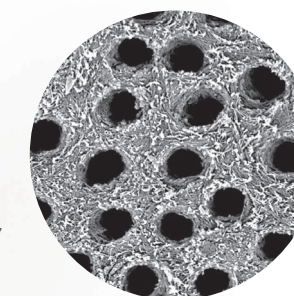
## Smear layer

*Instrumentation creates smear layer that traps bacteria in - and keeps gutta-percha out. Bleach can't remove smear layer.*



## Smear layer removed

*QMix 2in1 Irrigating Solution removes smear layer and kills 99.99% bacteria, so GuttaCore flows freely into dentinal tubules, isthmuses and lateral canals.\**



\* Internal data on file.

# Product references

## GuttaCore Obturators



### Blisters of 5x Obturators\*

20	GCP02026
25	GCP02526
30	GCP03026
35	GCP03526
40	GCP04026
45	GCP04526
50	GCP05026
55	GCP05526
60	GCP06026
70	GCP07026
80	GCP08026
90	GCP09026

### Box of 25 Obturators (5 Blisters)

20	GCP02023
25	GCP02523
30	GCP03023
35	GCP03523
40	GCP04023
45	GCP04523
Assorted**	GCPAA023

## GuttaCore for WaveOne Gold Size Verifiers



### Blister of 6x Size Verifiers

Small	TNSGCWG625SML
Primary	TNSGCWG625PRI
Medium	TNSGCWG625MED
Large	TNSGCWG625LRG

## GuttaCore Obturator Oven



HTR-GC

## GuttaCore Size Verifiers



### Blister of 6x Size Verifiers

20	GCSV620
25	GCSV625
30	GCSV630
35	GCSV635
40	GCSV640
45	GCSV645
Assorted**	GCSV650-90

## QMix® 2in1 Irrigating Solution



480ML	QMIX480ML
60ML	QMIX60ML

## EndoActivator® System Kit



<b>EndoActivator System Kit</b>	<b>EAS100</b>
1 Handpiece	
75 Tips	
100 Protective Barriers	

## GuttaCore for WaveOne® Gold Obturators



### Blisters of 5x Obturators\*

Small	TNSGCWG500SML
Primary	TNSGCWG500PRI
Medium	TNSGCWG500MED
Large	TNSGCWG500LRG

### Box of 25 Obturators (5 Blisters)

Small	TNSGCWGC00SML
Primary	TNSGCWGC00PRI
Medium	TNSGCWGC00MED
Large	TNSGCWGC00LRG

\* Includes one size verifier in every blister.

\*\* Assorted sizes include 1 blister each of 50, 60, 70, 80 and 90 sizes.