

THE DENTAL
SOLUTIONS
COMPANY™



Intego Ambidextrous

Turning in Perfection



A masterpiece of flexibility

Our era is marked by rapid progress. We need to be flexible to react to changes at ever shorter intervals. As a dental practitioner, you will already know that from your daily work routine. At Dentsply Sirona, we want to give you even more flexibility so that you will be able to react optimally to your needs and those of your patients, both now and in the future. To ensure this, we developed the Intego Ambidextrous treatment centre.

Intego Ambidextrous is designed for right- and left-handed dentists who want optimal ergonomics with no treatment compromises. Furthermore, this treatment centre also gives you the option of changing the treatment position easily and smoothly. The unique rotation mechanism makes it possible to convert the treatment centre from a right-handed to a left-handed position within just 15 seconds, making it very flexible, particularly in group practices.

Dentsply Sirona has developed a masterpiece of flexibility for your practice.

Extremely flexible in every respect

Your work day is complex, placing many different demands on the treatment centre you choose. Intego Ambidextrous gives you the perfect solution: Whether you select a treatment centre with whip arm or hanging hose design, for an Intego Ambidextrous or Intego Pro Ambidextrous, every option offers optimal performance at a reasonable price.

CS - The whip arm design



The whip arm design is ideal for the widest range of treatment situations with four-handed or two-handed dentistry.

Intego Pro Ambidextrous TS (OTP arm design) in position for left-handed working.

Your benefits:

- Ergonomic positioning of the dentist element due to a wide range support arm system
- Functional tray system with detachable tray that can be positioned flexibly
- Integrated, comprehensive infection prevention concept for optimal results



Upholstery colors

The elegant world

Carbon* Merlot* Platinum Pacific* Classic, timeless combinations for a truly sophisticated look.

The natural world

Umbra* Sapphire Basalt* Cherry Soft, warm shades for a soothing treatment atmosphere.

The vital world

Aloe Aqua Flamingo Orchid* Vivid colors and bright tones for a modern, lively atmosphere.

* Available colors for Lounge upholstery.

Ergonomic design

Intego Ambidextrous perfectly combines appearance and functionality. Dentsply Sirona treatment centres have earned prestigious design awards for their appearance, including the red dot design award, the iF Product Design Award Gold, the iF Communication Design Award, and the Good Design Award. Adapt the design of your chair to your personal style and taste.

In addition to their harmonious aesthetic appearance, Intego Ambidextrous has a highly sophisticated functional design, which meets the strict criteria of our ergonomic concept. Dentsply Sirona's ergonomic products provide optimal access to the patient combined with smooth treatment workflows with a high level of patient comfort.

A perfect ergonomic design is not only of immense importance for you, but also for your team and your patients.



Ergonomic design **for your team.**



Ergonomic design **for you.**



Ergonomic design **for your patients.**



Perfect ergonomic turning

In organising an efficient everyday practice routine, it is essential that the practice equipment can be adjusted not only to your requirements, but also to the requirements of your team. This is an even greater challenge in a group practice, where a treatment centre will be used by several dentists. The treatment area must be quickly and easily adjustable. This process must also be absolutely safe and stable. The Intego Ambidextrous is designed precisely for this purpose.

The turning process in a nutshell



1 The turn process is activated by a single step on the respective foot pedal and the backrest moves automatically in the designated Turn position.



2 As the water unit is smoothly moved behind the backrest on a robust support arm, the dentist element and OP light can be simultaneously swiveled to the new position with no additional space required.



3 Finally, if they are existent, tray holder and camera support can be swapped.

Your benefits

Fast

Due to the intelligent mechanism design, the treatment position can be switched in just 15 seconds.

Easy

There is no need for special training, the process can be intuitively handled by your team. The swivel mechanism is released with just one click on the foot pedal and the backrest travels automatically into the correct position.

Elegant

The treatment centre can be converted smoothly and effortlessly in a single flow. No jerky movements, no screws, no assembly.



Perfect ergonomic position for every treatment

Achieve perfect results even at the end of a long working day – with your expertise and the support of our treatment centre. No matter if you prefer to treat your patients as a right- or left-handed practitioner, in every situation you will benefit from intuitive sitting, comfortable positioning, optimal visibility and integrated workflows. This combination will allow you to maximise perfect clinical results.



1 Intuitive sitting

- **More freedom of movement**
Thin backrest for ideal freedom of leg movement, flexible positioning of the foot control
- **Optimised instrument placement**
Perfect coordination of dentist and assistant elements, flexible positioning of the additional tray in the whip arm and hanging hose models
- **Comfortable working stools**
Hugo, Carl

2 Comfortable positioning

- **Easy adjustment of the treatment centre**
Flexible height adjustment, swiveling cuspidor
- **Greater patient comfort**
Gentle chair lift drive, armrests, Vario footrest, comfortable upholstery, ErgoMotion

3 Optimum visibility

- **Perfect illumination of the treatment area**
LEDview Plus or LEDlight Plus, LED instrument light
- **Flexible headrests**
Flat or double articulating headrest
- **Perfect intraoral images**
SiroCam F, AF or AF+, 22" HD monitor on the treatment centre

4 Integrated workflow

- **Intuitive operation**
EasyPad user interface or EasyTouch touchscreen
- **Integrated tabletop device functions**
Integrated torque control for endodontics, Apex-Locator on the EasyTouch
- **Modern equipment**
Innovative instruments, modern patient communication system Sivision, USB, SD card and Ethernet interface

Your skill + Intego Ambidextrous = Perfect results

- Clinically perfect
- Aesthetically perfect
- Perfect for the success of your practice

Intuitive in every aspect

Difficult treatments require your full concentration. This is why Intego Ambidextrous is intuitive – with two intuitive user interfaces, innovative instruments and various integration possibilities for stress-free treatments. So you can concentrate on what's really important: your patient and a perfect treatment result.

State-of-the-art, intuitive interfaces



EasyPad

Clear and intuitive user interface – standard in both Intego Ambidextrous and Intego Pro Ambidextrous.



EasyTouch

This user interface can be optionally integrated. More operating comfort thanks to intuitive touchscreen technology and additional operating and display options.

Integration possibilities for endodontic treatments



ApexLocator

An ApexLocator can also be integrated into the EasyTouch to allow for permanent control of the working depth during endodontic treatment and a reduction of X-ray exposure.



Integrated Torque Control

Speed and torque are adjustable, and the motor stops automatically when the set maximum torque is reached. This ensures greater safety and perfect workflow for endodontic treatment.

- 1 Sprayvit E**
Optimal visibility due to integrated LED light.
- 2 BL ISO E motor**
Sterilisable brushless motor with speed and torque control during treatment. Especially lightweight, compact and with a wide speed range.
- 3 SiroSonic L scaler**
Handpiece and tips can be sterilised. Controlled, straight oscillation with electronic power and water control.
- 4 SiroCam F or AF or AF+**
Detailed intraoral images with the easy to operate SiroCam F or AF/AF+ with autofocus.



Ergonomically comfortable for every patient

Intego Ambidextrous patient chair has an ergonomic design which, together with the headrest, ensures that your patients feel especially comfortable. Patients who feel comfortable, feel more secure and remain loyal to your practice.



Double articulating headrest
Quickly adjustable to various treatment situations as well as patients with varying statures.

Premium/Lounge upholstery
The high-quality upholstery ensures comfort even during long treatments.

NEW: ErgoMotion
The tilting of the backrest matches the movement of the patient's spine to prevent stretching and compression effects.

Armrests
Your patients can rest their arms comfortably.

Lifting system
The unique chair lift drive gently moves patients into the proper position.

Vario footrest
The Vario footrest that comes with the Premium upholstery can be easily extended to provide even very tall patients with ergonomic positioning.

The upholstery options



Lounge upholstery
Soft, pleasant surface material and comfortable padding for utmost relaxation. Contoured surface for perfect positioning.



Premium upholstery
The high-quality, seamless upholstery ensures comfort even during long treatments.

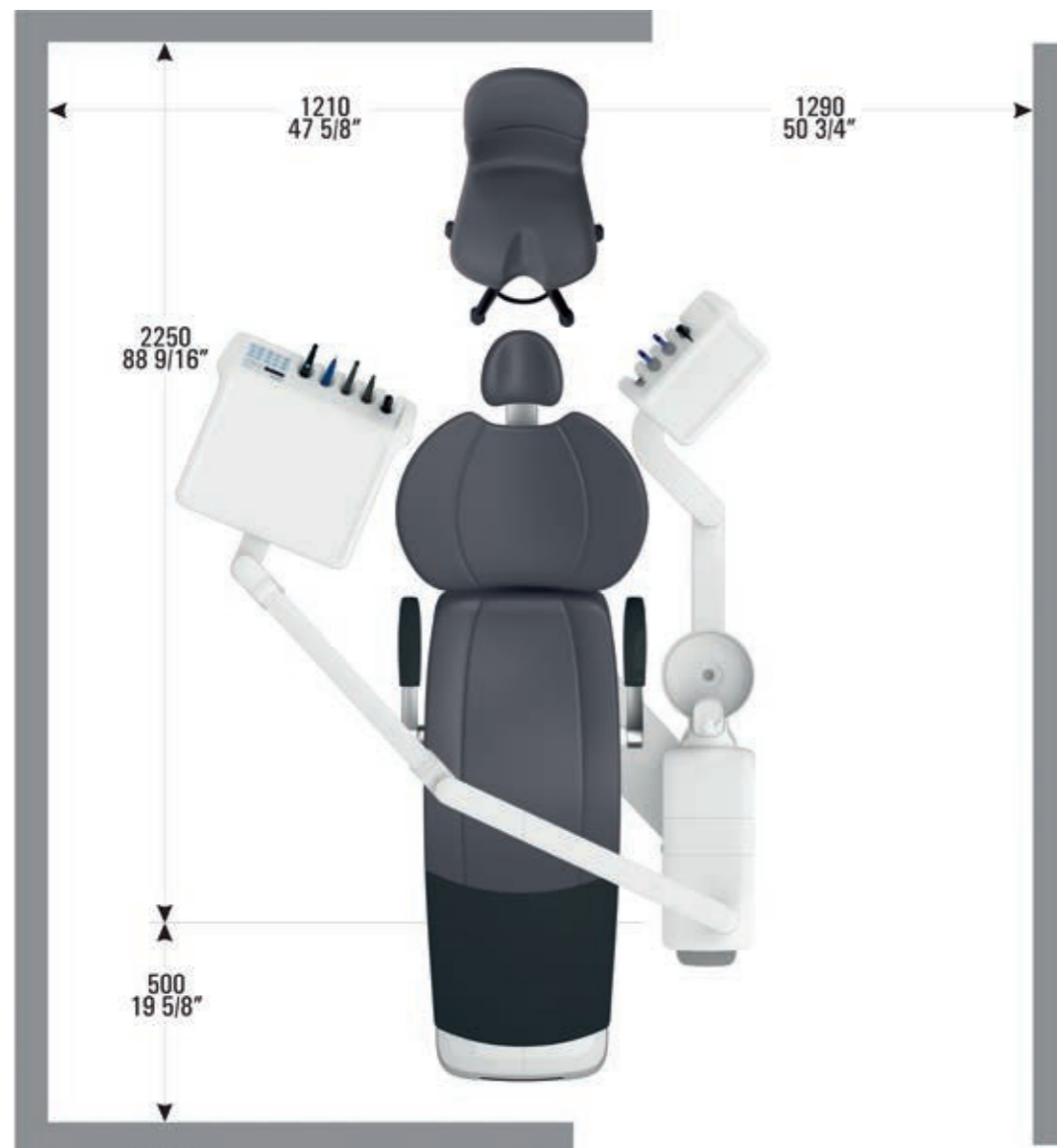
NEW: Dentsply Sirona's unique ErgoMotion for the Intego family

- Your benefits**
- Better positioning for maxillar or mandibular treatment
 - Less overstretching of patient's head
 - No overstretching and compressing of patient's spine
 - No readjustment of the headrest necessary

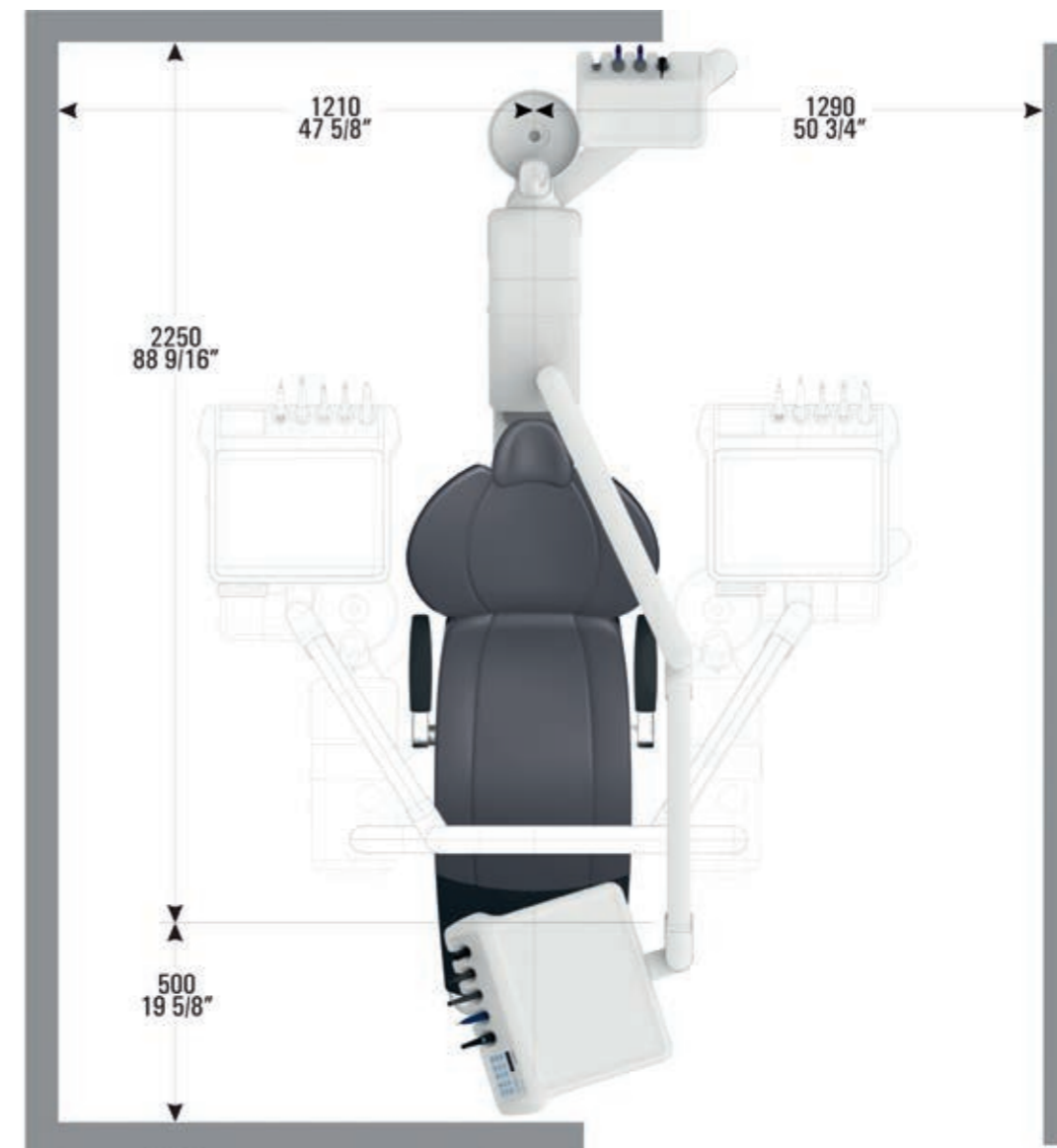
More freedom of movement with no extra space needed

Intego Ambidextrous provides great flexibility in a small area. Despite the conversion option, no more space is required than for our existing Dentsply Sirona treatment centre. The intelligently designed rotating mechanism enables compact and space-saving movement at all times in every phase. During the movement process, the treatment centre remains completely stable in all positions. The water unit is guided safely and in a controlled manner around the backrest - this rules out the risk of damage.

The following figures exemplify the fact that Intego Ambidextrous, in every phase of the conversion movement, does not require more space than any other Intego treatment centre.



This figure illustrates the required space of any Intego when used in 12 o'clock treatment position.



This figure illustrates the maximum required space of Intego Ambidextrous with Comfort assistant element during the conversion process.

Intelligent infection prevention for work flexibility

Dentists all over the world share the highest demands for the safety of their patients and practice team. The Intego Ambidextrous infection prevention concept is designed so you can comply quickly and easily with all infection control regulations while working with flexibility and ergonomics all at once.



- 1 Cuspidor**
Swiveling and removable, easy to clean, and easily accessible.
- 2 Suction systems**
Compatible with all conventional central wet or dry suction systems, including amalgam separator.
- 3 Purge and Autopurge function**
The instrument hoses can be flushed for a short time or cleaned intensively via the cleaning adapters.

Intego Ambidextrous

The water unit can be adapted to many different demands and requirements by freely selectable suction systems and options for infection prevention.



Fresh water bottle

For controlled water quality. Can also be filled with Dentosept S solution for permanent disinfection and manual sanitisation.



Automatic suction hose cleaning

Cleaning adaptor for automatic flushing of saliva ejector and spray aspirator.



Smooth surfaces

The largely gap-free design of the surfaces ensures maximum infection control in the shortest time possible.

Intego Pro Ambidextrous

The water unit is based on a comprehensive infection prevention concept. You achieve the highest infection control standards quickly and easily.



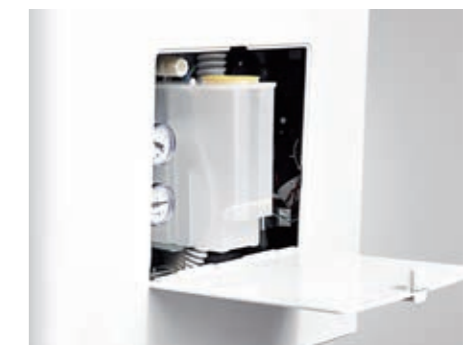
Integrated disinfection system

Permanent disinfection of all water lines with Dentosept S. Automatic sanitising function for regular intensive disinfection. Can also be used as a self-contained water supply.



Integrated cleaning adapters

For automatic purging of instrument hoses (Autopurge) and sanitisation of the water lines.



Chemical suction hose cleaning

Cleaning agent container for chemical flushing of the suction lines. The concentration of cleaning agents can be individually adjusted.

Quality made in Germany

We don't want to just satisfy our customers, we want to impress them. This is why quality, performance, and service are key for us. Dentsply Sirona treatment centres combine high quality with real innovations that perceptibly enhance treatment comfort and workflow.

Reliability and durability



Precise, elaborate quality tests and robust materials make Intego Ambidextrous a reliable product with an above-average service life. Designed and produced in Germany using precisely defined processes that ensure greatest reliability.

High standards



Dentsply Sirona is a technology leader with more than 130 years of innovation history. Our engineers and scientists in Research & Development not only pay close attention to innovation, but also quality.

High quality



Our treatment centre immediately shows our attention to detail. The materials used meet the high quality demands of a premium product.



Future-proof design

At the Dentsply Sirona innovation center, future trends are anticipated and products are prepared to be equipped for the technology demands of the future.



Remain flexible – now and in the future

Intego Ambidextrous is our masterpiece of flexibility. Not only for today, but also in the future, when you need to adjust the treatment centre to your individual requirements. This is why you can configure the Intego Ambidextrous exactly the way you need for optimal support of your treatment workflow.

Many models

Choice of two headrests

The flat headrest can be adjusted quickly and flexibly. Optionally, you can select a double articulating headrest that is easier to position and allows you optimal visibility even in difficult-to-see areas.



Flat headrest



Double articulating headrest

Two operating light options – always optimal illumination

Two choices of LED lights for optimal illumination of the operating field. Our premium operating light LEDview Plus offers a natural light through its polychrome LEDs for optimal shade matching.



LEDlight Plus



LEDview Plus

Assistant element: Comfort or Compact

Both assistant elements are very space-saving and ensure maximum freedom of movement. With the Comfort model, you can work comfortably even without an assistant.



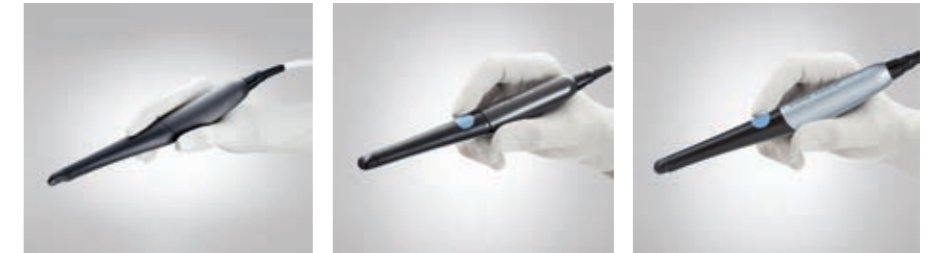
Comfort assistant element



Compact assistant element

Ultramodern equipment

The SiroCam F/AF/AF+ autofocus cameras combine superior image quality with easy operation.



	SiroCam F	SiroCam AF	SiroCam AF+
Focus	Fixed focus	Auto focus	Auto focus
Image format 16:10	✓	✓	✓
Pixels (usable)	0.42 megapixel	0.65 megapixel	1.00 megapixel
Workspace	✓ 5–20 mm	✓ 2–130 mm	✓ 2–130 mm
Resolution live-image	824 x 514	824 x 514	824 x 514
Resolution still-image	824 x 514	1024 x 640	1276 x 796

Future-proof design

Interfaces: flexible into the future

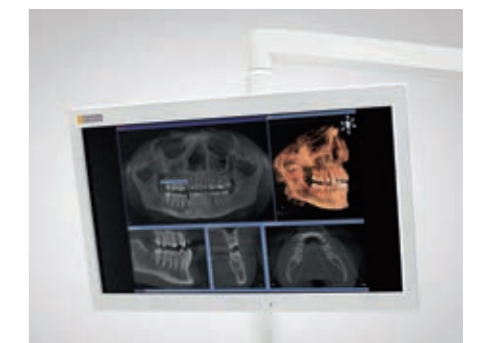
A network interface in the patient chair and a USB port in the dentist or assistant element allow you to integrate new functions and network your practice – troubleshooting by your service technician is also much easier.



Integrated USB interface

Sivision 22" AC monitor



With this HD monitor, you can explain intra-oral camera and X-ray images, software and planning views, videos and PowerPoint presentations to your patient directly at the treatment centre.



Sivision 22" AC monitor

Individual configuration



Intego Ambidextrous

Basic unit	Version
<p>Patient chair</p> <ul style="list-style-type: none"> Premium upholstery C+ electronic foot control Flat headrest <p>Dentist element</p> <ul style="list-style-type: none"> 5 instrument positions EasyPad user interface Supply for 2 drill drives <p>Assistant element</p> <ul style="list-style-type: none"> Compact version on a swivel arm directly mounted to the cuspidor 4 handpiece positions Saliva ejector and HVE <p>Water unit</p> <ul style="list-style-type: none"> Standard wet suction Ready for integration of a fresh water bottle Cuspidor with manual swivel function 	<p>TS version with hanging hoses</p>  <ul style="list-style-type: none"> The height of the dentist element can be adjusted and held in place with a pneumatic brake Ergonomic design with flexible positionable dentist element and movable tray holder Ample instrument area on the dentist element and tray holder <p>CS version with whip arms</p>  <ul style="list-style-type: none"> Ideal for the widest range of treatment situations, regardless of two-handed or four-handed treatment Optimum reach of instrument hoses: up to 90 cm The height of the dentist element can be adjusted and held in place with a pneumatic brake

You can configure your Intego Ambidextrous treatment centre to fit your needs and meet your own desired great value.

User packages	Option packages
<p>Start</p> <ul style="list-style-type: none"> Standard 3-way syringe Light source in the dentist element 2 turbine hoses LEDlight* <p>Innovation</p> <ul style="list-style-type: none"> C+ electronic foot control Sprayvit E in the dentist element Light source in the dentist element 1 turbine hose 1 BL ISO E micro-motor with supply electronics SiroSonic L scaler LEDview Plus <p>Ergo</p> <ul style="list-style-type: none"> ErgoMotion Chair lift system 185 kg 2 armrests Double articulated headrest <p>* LEDview Plus at additional charge ** Only with EasyTouch</p>	<p>Advance</p> <ul style="list-style-type: none"> C+ electronic foot control Sprayvit E in the dentist element Light source in the dentist element 1 turbine hose 1 BL ISO E micro-motor with supply electronics LEDlight* <p>Touch Plus</p> <ul style="list-style-type: none"> C+ electronic foot control 1 BL ISO E micro-motor with supply electronics 1 turbine hose Light source in the dentist element EasyTouch user interface LEDview Plus <p>Endo Pro**</p> <ul style="list-style-type: none"> Integrated torque control ApexLocator Endo 6:1 contra-angle handpiece e-Control
	<p>Sivision Ready</p> <ul style="list-style-type: none"> USB interface for the dentist or assistant element Network interface <p>Sivision Start with/without monitor</p> <ul style="list-style-type: none"> USB interface for the dentist or assistant element Network interface SiroCam F (SiroCam AF or AF+ at additional charge) Monitor mount on the light support column Optional: 22" AC monitor

Intego Pro Ambidextrous

Basic unit	Version
<p>Patient chair</p> <ul style="list-style-type: none"> Premium upholstery C+ electronic foot control Flat headrest 4-way foot switch <p>Dentist element</p> <ul style="list-style-type: none"> 5 instrument positions EasyPad user interface Supply for 2 drill drives Instrument light source Supply electronics for up to 2 motors and scaler <p>Assistant element</p> <ul style="list-style-type: none"> Compact version on a swivel arm directly mounted to the cuspidor 4 handpiece positions Saliva ejector and HVE Light source for Sprayvit E <p>Water unit</p> <ul style="list-style-type: none"> Ready for the integration of an automatic disinfection device Integrated cleaning adapters Cuspidor with manual swivel function Wet suction with multi-station valve Integrated water flush suction hose cleaning Water heater 	<p>TS version with hanging hoses</p>  <ul style="list-style-type: none"> The height of the dentist element can be adjusted and held in place with a pneumatic brake Ergonomic design with flexible positionable dentist element and movable tray holder Ample instrument area on the dentist element and tray holder <p>CS version with whip arms</p>  <ul style="list-style-type: none"> Ideal for the widest range of treatment situations, regardless of two-handed or four-handed treatment Optimum reach of instrument hoses: up to 90 cm The height of the dentist element can be adjusted and held in place with a pneumatic brake

User packages	Option packages
<p>Start Pro</p> <ul style="list-style-type: none"> C+ electronic foot control Sprayvit E in the dentist element 1 turbine hose 1 BL ISO E micro-motor LEDlight* <p>Advance Pro</p> <ul style="list-style-type: none"> C+ electronic foot control Sprayvit E in the dentist element 1 turbine hose 1 BL ISO E micro-motor SiroSonic L scaler EasyTouch user interface LEDview Plus <p>* LEDview Plus at additional charge ** Only with EasyTouch</p>	<p>Innovation Pro</p> <ul style="list-style-type: none"> C+ electronic foot control Sprayvit E in the dentist element Third drill drive 1 turbine hose 2 BL ISO E micro-motors SiroSonic L scaler EasyTouch user interface Sprayvit E in the assistant element LEDview Plus <p>Endo Pro**</p> <ul style="list-style-type: none"> Integrated torque control ApexLocator Endo 6:1 contra-angle handpiece e-Control
	<p>Sivision Ready</p> <ul style="list-style-type: none"> USB interface for the dentist or assistant element Network interface <p>Sivision Start with/without monitor</p> <ul style="list-style-type: none"> USB interface for the dentist or assistant element Network interface SiroCam F (SiroCam AF or AF+ at additional charge) Monitor mount on the light support column Optional: 22" AC monitor

Your individual options

Here you can view the complete list of individual options, and a checklist of what is included with basic units.

Intego Ambidextrous

Pro

Patient chair		
2 treatment positions, S and O position	■	■
Integrated junction box	■	■
Chair lift system 140 kg	■	■
Chair lift system 185 kg	□Er	□Er
Flat headrest	■	□
Double articulating headrest	□Er	■
Premium upholstery	■	■
Lounge upholstery	□	□
ErgoMotion	□Er	□
4-way foot switch	□	■
Booster cushion for small patients	□	□
Right armrest	□Er	□
Left armrest	□Er	□
Valve set for external devices	□	□
Vacuum pressure reduction kit	□	□
Cover installation kit	□	□
Separate junction box	□	□
Adapter plate	□	□

Dentist element

Height-adjustable support arm	■	■
5 instrument positions	■	■
Hydro-pneumatic supply for 2 drill drives w/o fiber optics	■	■
C* electronic foot control	■ A, I, T	■ S, A, I
EasyPad user interface with 2 user-specific settings	■	□
EasyTouch user interface with 4 user-specific settings	□T	■ A, I
Sprayvit E with light	□A, I	■ S, A, I
Sprayvit E with light (water button on the left)	□A, I	□ S, A, I
Standard 3-way syringe	■ S	-
Turbine hose with light	■ 2xS, A, I, T	■ S, A, I
1st BL ISO E motor with hose	■ A, I, T	■ S, A, I
2nd BL ISO E motor with hose	□	□I
SiroSonic L scaler	□I	■ A, I
Third drill drive	□	□I
Satelec Mini LED curing light	-	□
Intra-oral light source kit for turbine and Sprayvit E	■ S, A, I, T	■
Torque control for endodontic treatments	□E	□E
eControl: Speed range of 100 - 40,000 rpm	□E	□E
Integrated ApexLocator	□E	□E
Endo 6:1 contra-angle handpiece	□E	□E
Intra-oral X-ray viewer	□	□
Purge and manual sanitisation function	□	-
Purge and Autopurge	-	■
Flexible TS tray holder for 2 standard size trays	□	□
Flexible TS camera holder	□	□
Silicone pad for TS dentist element	□	□
Additional CS tray holder for 1 standard size tray	□	□
Additional CS tray holder for 2 standard size trays	□	□
Silicone pad for CS dentist element	□	□
Removable silicone sleeves for handles	□	□

Intego Ambidextrous

Pro

Assistant element		
Compact assistant element, swivel mounted directly on the cuspidor arm	■	□
Comfort assistant element, ideal for two-handed dentistry	□	■
4 instrument positions	■	■
Saliva ejector and HVE	■	■
Sprayvit E with light	□	□I
Sprayvit E with light (water button on the left)	□	□I
Standard 3-way syringe	□	-
2nd HVE kit	□	□
Satelec Mini LED curing light	□	□
Touch pad	□	□
Light source for Sprayvit E	□	■
Silicone pad for Comfort assistant element	□	□

Water unit

Prepared for fresh water bottle	■	-
Prepared for integrated disinfection device	-	■
Cuspidor with manual swivel function	■	■
Water unit without cuspidor	□	□
Prepared for standard wet suction	■	-
Prepared for standard wet suction w/automatic suction control	□	-
Multi-station valve	□	□
Cuspidor valve for standard wet suction	■	■
Automatic separator	□	□
Amalgam separator	□	□
Fresh water bottle w/o switch to public water supply	□	-
Fresh water bottle with switch to public water supply	□	-
Integrated disinfection system with permanent waterline disinfection and automatic sanitisation function	-	□
Water heater	□	□
Water flush suction hose cleaning system	□	■
Chemical suction hose cleaning system	-	■

Operating light options

LEDlight Plus	■ S, A	□ S
LEDview Plus	□ I, T	■ A, I

Patient communication

USB interface in the dentist or assistant element	□ SIR, SIS	□ SIR, SIS
SiroCam F	□ SIS	□ SIS
SiroCam AF	□	□
SiroCam AF+	□	□
Monitor mount on the light support column	□ SIS	□ SIS
22" AC monitor (with integrated power supply unit)*	□ SIS*	□ SIS*
Network interface	□ SIR, SIS	□ SIR, SIS

- Included in basic unit
- Option
- Not possible/applicable
- SIR Sivation Ready package
- SIS Sivation Start package
- SIS* Sivation Start package with monitor
- S Start/Start Pro package
- A Advance/Advance Pro package
- I Innovation/Innovation Pro package
- E Endo Pro package
- Er Ergo package
- T Touch Plus package



Hugo working stool



Carl working stool



Paul working stool (pictured with additional foot ring)



Additional swiveling tray holder for CS dentist element



4-way foot switch



Standard 3-way syringe



Satelec Mini LED curing light



X-ray viewer



Flexible tray and camera holder



Comfort assistant element with user interface



C+ electronic foot control



Double articulating headrest



Valve set for external devices



22" AC monitor



LEDlight Plus



LEDview Plus



Intego Ambidextrous without cuspidor



SiroCam F



SiroCam AF



SiroCam AF+

Procedural Solutions

Preventive
Restorative
Orthodontics
Endodontics
Implants
Prosthetics

Enabling Technologies

CAD/CAM
Imaging
Treatment Centres
Instruments

ANZ  clientservices@dentsplysirona.com  11-21 Gilby Road, Mount Waverley, VIC 3149  www.dentsplysirona.com

Australia  1300 552 929 | **New Zealand**  0800 336 877

YOUR
CONFIDENCE
IS OUR
INSPIRATION.

