

Treatment Centres

# Quality Beyond Reliability.

[dentsplysirona.com/quality-beyond-reliability](https://dentsplysirona.com/quality-beyond-reliability)



---

YOUR  
CONFIDENCE  
IS OUR  
INSPIRATION.

 Dentsply  
Sirona

What does it take  
for a treatment  
Centres to become a  
**Dentsply Sirona**  
treatment Centres?



We are committed to innovation and to helping dental professionals around the world achieve more than ever before. It takes a deep-rooted heritage focused on quality beyond reliability. It takes diligence and ingenuity. But above all, it takes experts who refuse to take "no" for an answer.

We push boundaries to deliver solutions that resolve even the most demanding of requirements. We work closely with dentists from all over the world and listen to their needs. Because in the end, dental professionals are our biggest source of inspiration.

#### Engineering

More than 600 highly qualified engineers work in our Dentsply Sirona research & development department. Their inventions empower dental professionals to provide better, safer, faster dental care. Today and tomorrow.

#### Materials

With over a century of storied history and innovative leadership we know that input affects output. For this reason, we only work with suppliers who offer us the very best quality in their respective fields of work.

#### Production

Experienced specialists working in production have the expertise they need to pay attention to the detail we need.

#### Testing

As a company, we are committed to total quality. This includes a group of specially trained checkers who work in soundproof rooms to evaluate the functionality of every treatment centre before it is delivered to you.

#### Sales

Our sales force is present in 140 countries to provide you with solutions tailored to your specific needs wherever you are.

#### Delivery

Our supply chain ensures that all processes are perfectly coordinated - from the sourcing of raw materials through to the final delivery to your practice.

## It takes commitment

For more than 100 years the technologies of Dentsply Sirona have represented the pioneering spirit of the dental industry. Our commitment to create better, safer and faster dental care has guided us from the first SIRONA unit in 1956, the launch of the iconic M1 in 1983, to the introduction of Teneo, Sinius and Intego. Today, our treatment centres have long become icons. Not only because of their timeless beauty, but also because of the unmistakable values that they stand for - delivering innovative dental solutions to improve oral health worldwide, for the benefit of patients and practices. And we're just getting started.



30\*

innovative solutions every year



100

years of experience



\$125 Mio.\*

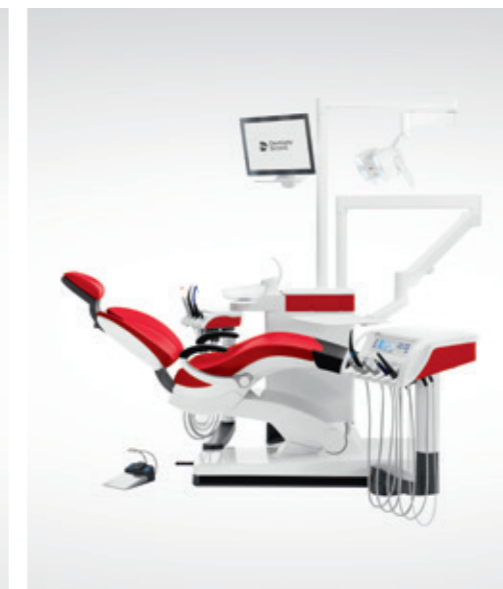
R&D investment every year

\* Dentsply Sirona company figures

Teneo

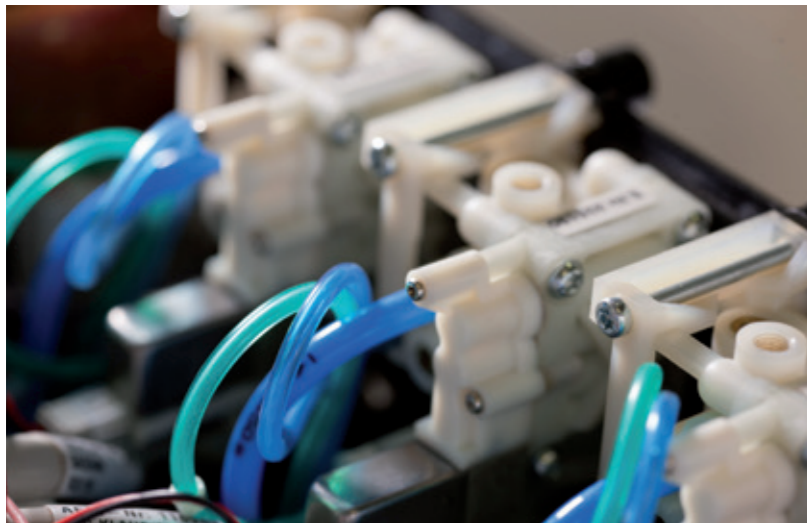


Sinius



Intego Pro





Technology that stands the test of time - installed more than 300.000 times

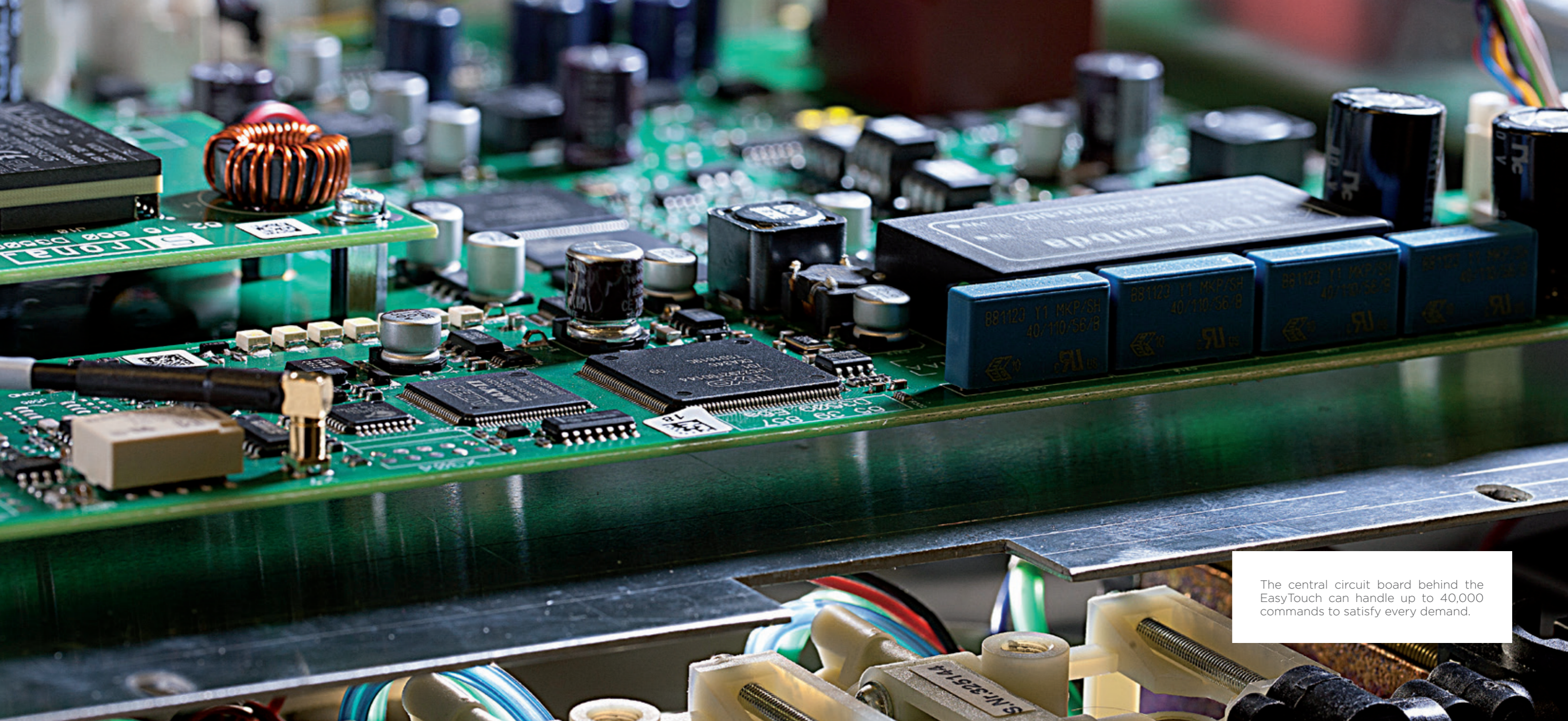
## It takes reliability

Delivering extraordinary treatment centres does not just happen by chance. It takes handcraftsmanship. It takes experience. It takes passion. And it takes an engineering heritage that sets unmatched standards of excellence, reliability and longevity. The essence of delivering simplicity out of complexity is a guiding principle behind all Dentsply Sirona treatment centres.

When failure simply isn't an option, you need to be able to rely on your treatment centre. That is why we spend more time testing than perhaps any other company in the dental industry. The rigorous selection of materials, from the choice of solid steel components on the inside to the selection of exclusive upholstery on the outside turn a conventional dental unit into a Dentsply Sirona treatment centre.



The ingenious "supply block" in the dentist element regulates the perfect water / air flow.



The central circuit board behind the EasyTouch can handle up to 40,000 commands to satisfy every demand.

## It takes integration



EasyTouch - advanced technology at your fingertips

It is simple to create something that looks good. But it is complicated to create something that is simple. Simplicity is, however, the prerequisite for an exceptional intuitive design. When you see something, you instinctively need to know what to do. It takes an integrated workflow that is not only easy to understand but also easy to use. The design code is practically invisible so you can focus on a task at hand without stopping even for one second. The EasyTouch interface directs your attention to tasks that are important with numerous innovative functions that support a more integrated workflow in fields like endodontics and implantology.

With the digital generation of treatment centres, every Dentsply Sirona model features the EasyTouch interface. The touchscreen facilitates a streamlined workflow with numerous customisable programming features to match your specific requirements.



Motor driven sliding track for seamless workflows

## It takes innovation

Limited space. Unlimited opportunities. We are obsessed with solutions that can empower dental professionals to deliver the best possible dental care - for the benefit of their patients and practices.

The motor driven sliding track not only runs smoothly, it perfectly supports your ergonomic workflow. The galvanized steel construction is wear tested for extreme longevity. The wireless foot switch is a multifunctional control element for all chair functions. Together, they provide hands free control for a hands-on workflow so that your hands can do what they were trained to do. Treat the patient. That is what we call innovation working for you.



The Dentsply Sirona motorised sliding track: Robust on the inside. Elegant on the outside.



Special thermoforming processes paired with meticulous handcraft result in iconic design.

## It takes intelligent design



Handcrafted details



Unmistakable contours

Good design is obvious. Great design is unforgettable. The really amazing thing about our treatment centres is the harmony of the design concept, in which form follows function. The distinctive streamlined contours, thanks to the special thermoforming process, are instantly recognisable. The materials used set unmatched standards of excellence, durability and performance. It takes people who do great work because they love the work they do – sewing, shaping and trimming by hand. It takes high-tech machines and state-of-the-art ingenuity. And above all, it takes a design concept that can turn a treatment into an oasis of calm. Because we know, feeling good feels great.



The art of ergonomics

## It takes experience

A Dentsply Sirona treatment centre is not an everyday unit. It is a dental unit for every day with ergonomic details that make a difference. As the focal point of the practice, it is the most unmistakable showpiece and can actually help turn an appointment into a first-class experience – a must-have in today's comfort-conscious driven dentistry.

Details are not just details. They make the difference. Our motor driven headrests for example, are manufactured using high-grade German steel. They actively enhance the interaction between you and the patient so that the patient feels comfortable while you have optimal access. This can go a long way toward avoiding posture-related pain associated with prolonged sitting.



The innovative motorised headrest sets unmatched standards of engineering excellence.



#### Procedural Solutions

Preventive  
Restorative  
Orthodontics  
Endodontics  
Implants  
Prosthetics

#### Enabling Technologies

CAD/CAM  
Imaging  
Treatment Centres  
Instruments

---

**Australia** 📞 1300 552 929 🌐 [www.dentsplysirona.com.au](http://www.dentsplysirona.com.au) | **New Zealand** 📞 0800 336 877 🌐 [www.dentsplysirona.co.nz](http://www.dentsplysirona.co.nz)  
**ANZ** ✉ [clientservices@dentsplysirona.com](mailto:clientservices@dentsplysirona.com) 📍 11-21 Gilby Road, Mount Waverley, VIC 3149

YOUR  
CONFIDENCE  
IS OUR  
INSPIRATION.

 **Dentsply  
Sirona**