

Ceram.x Spectra™ ST flow

Flowable Composite Restorative

Ordering Information

COMPULA® INTRODUCTORY KIT

607.01.800

24 Compula® Tips (0.25g ea)
 4 shade A1 (= VITA® shades A1; B1; C1)
 4 shade A2 (= VITA® shades A2; B2; D2)
 8 shade A3 (= VITA® shades A3; C2; D3; D4)
 4 shade A3.5 (= VITA® shades A3.5; B3; B4; C3)
 4 shade A4 (= VITA® shades A4; C4)
 Compules Tips Gun
 i-shade label



SYRINGE INTRODUCTORY KIT

607.01.820

5 Syringes (1.8g each) Shades A1-A4
 50 syringe tips
 i-shade label



COMPULA® TIPS REFILLS

16 Compula® Tips (0.25g ea)

Shades

A1 (= VITA® shades A1; B1; C1)
 A2 (= VITA® shades A2; B2; D2)
 A3 (= VITA® shades A3; C2; D3; D4)
 A3.5 (= VITA® shades A3.5; B3; B4; C3)
 A4 (= VITA® shades A4; C4)
 BW (Bleach White)
 D1 (Opaque Dentin)
 D3 (Opaque Dentin)
 E1 (Translucent Enamel)

607.01.801
 607.01.802
 607.01.803
 607.01.805
 607.01.804
 607.01.806
 607.01.807
 607.01.808
 607.01.809



SYRINGE REFILLS

2 Syringes (1.8g ea)
 25 Syringe Tips

Shades

A1 (= VITA® shades A1; B1; C1)
 A2 (= VITA® shades A2; B2; D2)
 A3 (= VITA® shades A3; C2; D3; D4)
 A3.5 (= VITA® shades A3.5; B3; B4; C3)
 A4 (= VITA® shades A4; C4)
 BW (Bleach White)
 D1 (Opaque Dentin)
 D3 (Opaque Dentin)
 E1 (Translucent Enamel)

607.01.821
 607.01.822
 607.01.823
 607.01.825
 607.01.824
 607.01.826
 607.01.827
 607.01.828
 607.01.829



SYRINGE TIP REFILL

607.01.819

50 syringe tips



©Dentsply Sirona Inc. 1901. All rights reserved. VITA is not a registered trademark of Dentsply Sirona.



Ceram.x Spectra™ ST flow

Flowable Composite Restorative

A simpler, more versatile
 esthetic flowable composite

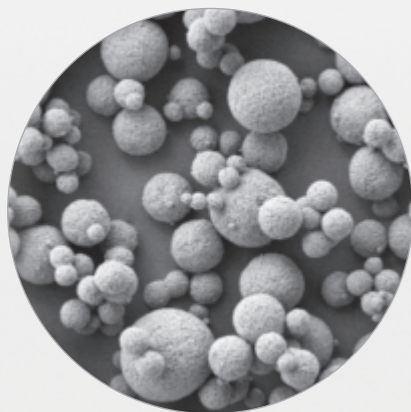
Ceram.x Spectra™ ST flow
Flowable Composite Restorative

A simpler, more versatile esthetic flowable composite

Thanks to our unique SphereTEC® technology, Ceram.x Spectra™ ST flow composite offers greater simplicity and versatility than you've ever seen in an esthetic flowable.

- ➔ STREAMLINED SHADE COVERAGE
- ➔ OPTIMIZED HANDLING
- ➔ LASTING ESTHETICS

Ceram.x Spectra™ ST flow material, powered by SphereTEC® technology.



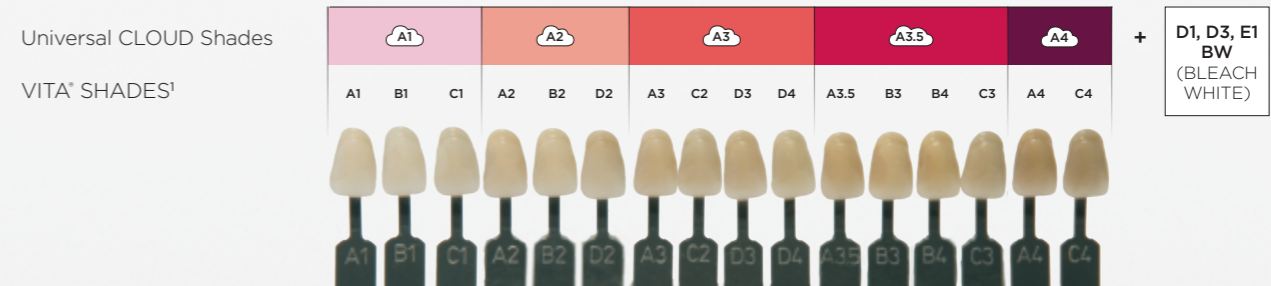
SEM picture of SphereTEC® spherical prepolymerized fillers. Their shape and size distribution optimize the material's flow-on-demand handling.



Technical features			
Compressive strength	330 MPa	Flexural modulus	5,4 GPa
Fracture Toughness	1,6 MPa m ^{1/2}	Filler content (weight/volume)	62,5 % weight or 40 % volume
Depth of cure	2 mm	Filler size (average)	0,6 µm
Flexural strength	108 MPa	Shrinkage (Pycnometer)	4,3 vol-%
Radiopacity	1,8 mm eq. Al (analog method)	Sensitivity to ambient light (8000 lx)	120 s

Five Shades cover the full 16-shade VITA® range

- Chameleon blending enables universal CLOUD shades A1-A4 to cover the full VITA¹ range
- Bleach white plus two opaque dentin shades and one translucent enamel shade accommodate special cases
- Flawless shade match to our full Ceram.x Spectra™ ST & Ceram.x Spectra™ ST Effects universal composite portfolio



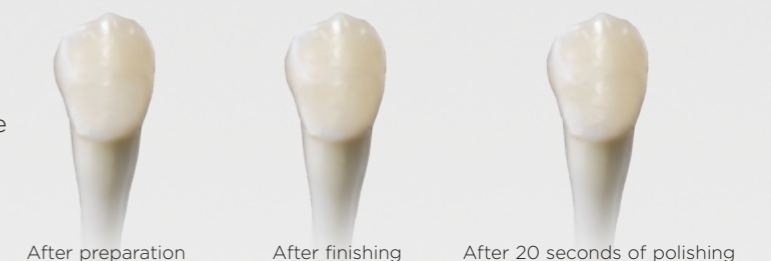
Flow-on-demand handling provides optimum versatility

- Stays put until flow behavior initiates on your command with instrumentation
- Convenient application in Compula® Tips or Syringe



High strength and stain resistance, easy polishing

- SphereTEC® technology delivers trusted strength
- Resistant to staining from common colorants such as coffee, tea, and red wine
- Quickly and easily polishes to a high gloss



1. VITA is not a registered trademark of Dentsply Sirona.