



Ceram.x Spectra™ ST
Universal Composite Restorative

Excellent adaptation
and sculptability

Ceram.x Spectra™ ST

Ceram.x Spectra ST is a universal composite for all cavity classes in the anterior and posterior region. Thanks to a patented filler technology containing granulated spherical fillers in combination with an optimized resin matrix system results in preferred handling properties:

- Adapts easily to cavity surfaces
- Doesn't stick to hand instruments
- Easy to sculpt
- Slump resistant



Ceram.x Spectra™ ST

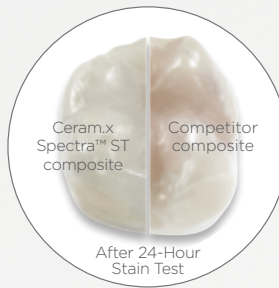
Rely on Ceram.x Spectra ST composite system that covers most handling preferences, esthetic needs, reliable strength and ease of use.



Optimized handling in two viscosities, HV (High viscosity) and LV (Low viscosity)



Enhanced chameleon blending ability



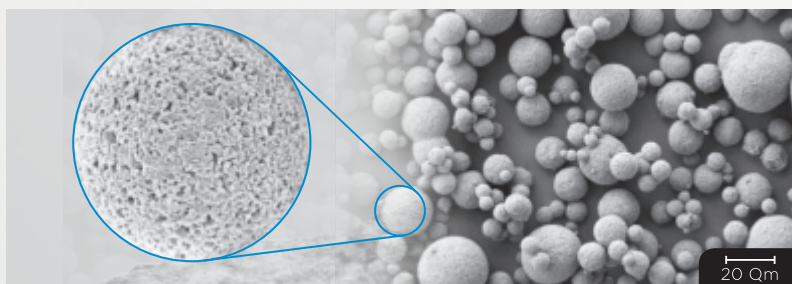
High strength and stain resistance



Fast and easy polishing for outstanding gloss

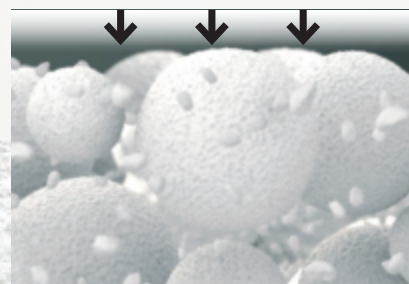
SphereTEC™ filler technology

Ceram.x Spectra™ ST is based on the advanced granulated filler technology SphereTEC™ which is patent applied. SphereTEC™ stands for the process of manufacturing microsized, well-defined spherical superstructures, comprising of submicron glass. The SphereTEC™ fillers' morphology, particle size distribution and surface microstructure are key for the enhanced handling comfort and esthetic outcome.



Microstructured surface of a SphereTEC™ filler (d3.50 - 15 µm), obtained via spray-granulation process from submicron glass fillers.

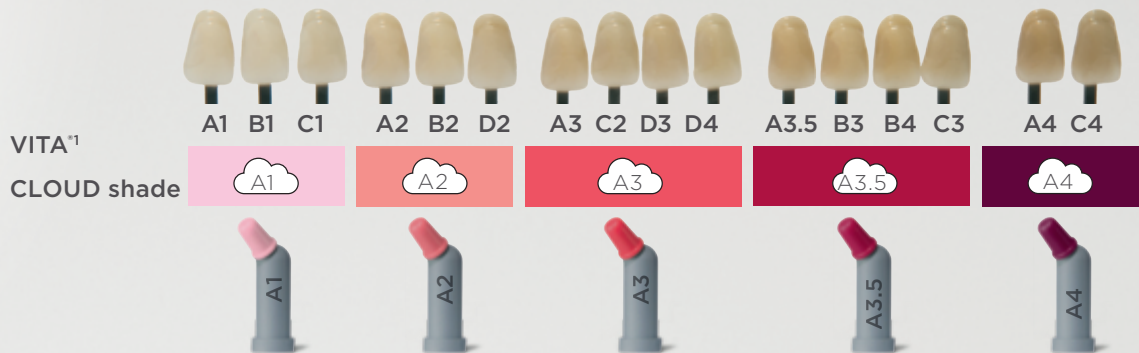
SEM picture showing SphereTEC™ spherical prepolymerised fillers providing a ball-bearing effect that enables excellent adaptation and sculptability.



The micro-granulated structure of SphereTEC™ is able to bind more free resin compared to usual fillers. Therefore Ceram.x Spectra™ ST does not stick to hand instruments.

5 Cloud shades cover the full VITA® range

The CLOUD shade concept is designed to achieve shade match with the full range of VITA¹ shades with a minimised number of universal shades. Ceram.x Spectra™ ST contains five CLOUD shades of moderate translucency named A1 to A4.²



Esthetics made easy

Anterior restoration



Before



After restorations with Ceram.x Spectra™ ST A3 from 32 to 43.

Ian Cline, UK

Posterior restoration



Tooth 36 with an occlusal caries lesion.

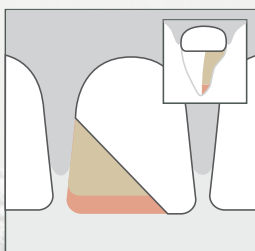


Restoration with Ceram.x Spectra™ ST A2 giving the tooth back its lost anatomy and natural esthetic.

José Bahillo, Spain

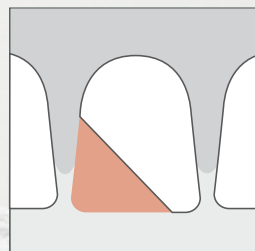
Ceram.x Spectra™ ST Effects

For esthetically demanding anterior cases, Ceram.x Spectra ST works with Ceram.x Spectra ST Effects in a simplified layering technique.



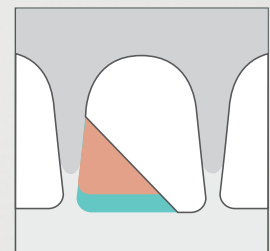
Opaque Dentin Shade

Restore lingual 1/2 of tooth thickness with opaque dentin and universal CLOUD shade.



Universal CLOUD Shade

Restore facial 1/2 of tooth thickness with universal CLOUD shade.



Translucent Enamel Shade

Use the translucent enamel shade for the facial incisal edge increment. (Optional)

¹ VITA® is not a registered trademark of Dentsply Sirona.

² Additionally a Bleach White shade is available in Compules® Tips for the restoration of bleached teeth!

Ordering Information

HIGH VISCOSITY

Compules[®] Tips Intro Kit (HV) 607.01.570N

24 HV Compules[®] Tips (Gray) - (0.25 g each), (4 x A1; 4 x A2; 8 x A3; 4 x A3.5; 4 x A4), 1 Compules[®] Tips Gun

Syringe Intro Kit (HV) 607.01.550N

5 HV Syringes (Gray) - (3 g each) , (A1; A2; A3; A3.5; A4),
1 Bottle Prime&Bond active™ Adhesive (2.5 mL)

Refills (HV)

Shades

A1 (= VITA[®] shades A1; B1; C1)

A2 (= VITA[®] shades A2; B2; D2)

A3 (= VITA[®] shades A3; C2; D3; D4)

A3.5 (= VITA[®] shades A3.5; B3; B4; C3)

A4 (= VITA[®] shades A4; C4)

BW (Bleach White)

Compules[®] Tips

(16 x 0.25 g)

607.01.571N

607.01.572N

607.01.573N

607.01.575N

607.01.574N

607.01.576N

Syringe

(1 x 3 g)

607.01.551N

607.01.552N

607.01.553N

607.01.555N

607.01.554N

Eco Refills (HV)

Shades

A2 (= VITA[®] A2; B2; D2)

A3 (= VITA[®] A3; C2; D3; D4)

Compules[®] Tips

(52 x 0.25 g)

607.01.582N

607.01.583N

LOW VISCOSITY

Compules[®] Tips Intro Kit (LV) 607.01.690

24 LV Compules[®] Tips (Blue) Assorted - (0.25 g each), (4 x A1; 4 x A2; 8 x A3; 4 x A3.5; 4 x A4), 1 Compules[®] Tips Gun

Refills (LV)

Shades

A1 (= VITA[®] shades A1; B1; C1)

A2 (= VITA[®] shades A2; B2; D2)

A3 (= VITA[®] shades A3; C2; D3; D4)

A3.5 (= VITA[®] shades A3.5; B3; B4; C3)

A4 (= VITA[®] shades A4; C4)

BW (Bleach White)

Compules[®] Tips

(16 x 0.25 g)

607.01.691

607.01.692

607.01.693

607.01.695

607.01.694

607.01.696

Eco Refills (LV)

Shades

A2 (= VITA[®] A2; B2; D2)

A3 (= VITA[®] A3; C2; D3; D4)

Compules[®] Tips

(52 x 0.25 g)

607.01.672

607.01.673

Ceram.x Spectra™ ST Effects

Universal Composite Restorative - Compules[®] Tips - HIGH VISCOSITY

Compules[®] Tips Introductory Kit 6070 1710

24 Compules[®] Tips (0,25g each) 12 x D1, 8 x D3, 4 x E1

HV Refills (16 x 0,25g)

D1 (use with A1; A2)

D3 (use with A3; A3.5; A4)

E1 (use with A1; A2; A3; A3,5; A4)

Compules[®] Tips

607.01.718

607.01.719

607.01.717

Technical features

Curing time, 2 mm ¹	≥ 800 mW: 10 s	Working time (10.000 lx)	130 s
Filler content ²	Up to 79 % weight Up to 61 % volume	Compressive strength	400 MPa
Shrinkage (Archimedes)	2.3 vol-%	Flexural strength	135 MPa
Shrinkage stress (ADA)	2.98 MPa	Flexural modulus	8.5 GPa
Radiopacity	2.3 mm Al	Vickers hardness (VH5/10s)	60

¹ Curing time for Ceram.x Spectra ST Effects see separate DFU.

² SphereTEC[®] and conventional filler as well as ytterbium fluoride; content varies ± 2 % among shades.

