

**+**  
**WE  
KNOW  
ENDO.**



## Gutta-Smart™ and Conform Fit™ Gutta-Percha

Total Cordless Obturation Solution

The warm vertical solution  
that flows together

# Optimize your obturation with the complete, low-temperature solution

Fill canals conveniently and reliably with Gutta-Smart™ cordless obturation device and Conform Fit™ gutta-percha master cones. Designed to work together, they feature the same low-temperature flow characteristics and radiopacity for a total warm vertical obturation solution.



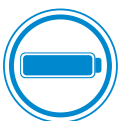
**Durable, cordless performance.** Well-balanced, lightweight and comfortable to use, both handpieces are cordless for freedom of movement.



**Gutta-percha with low-temperature flow.** In both Conform Fit™ master cones and Gutta-Smart™ cartridges, the gutta-percha formula flows at a lower temperature, requiring less heat from the handpieces.



**The right fit you can feel.** Conform Fit™ master cones provide a snug apical fit for accurate tug-back, while the cordless Gutta-Smart™ handpieces provide precise control and excellent tactile feedback.



**All-day power\*.** A single charge gives you the power to complete an entire day's work.

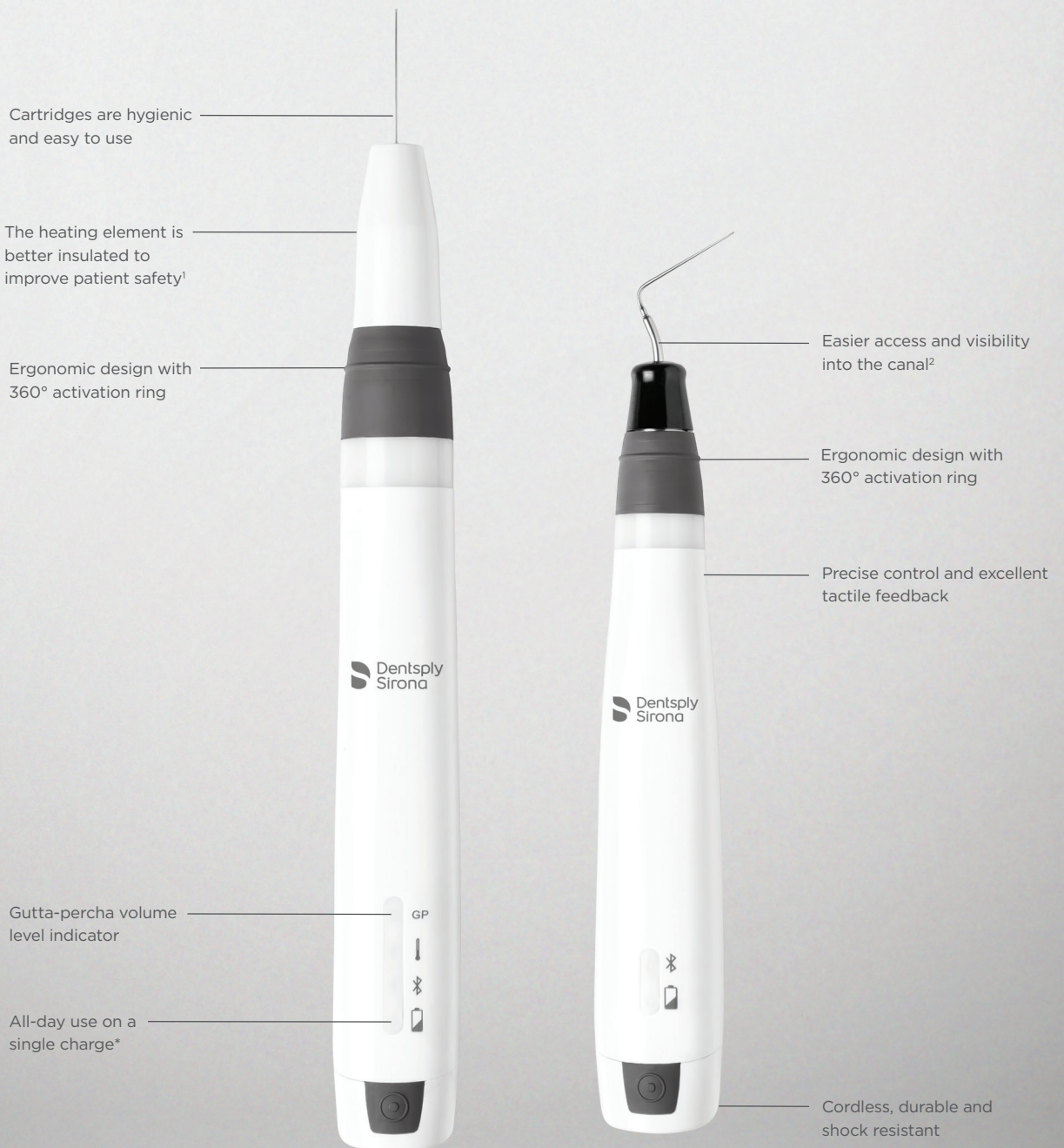


**Patient safety.** You can feel confident knowing the unique formula is not made with natural rubber latex.

\*The battery capacities of the Flow and Pack handpieces allow for them to be used up to five procedures per day on a single charge.

# The efficiency of a total solution

At Dentsply Sirona, we are committed to developing solutions that empower you to provide better, safer endodontics. Gutta-Smart™ provides convenient and reliable obturation when used with Conform Fit™ Gutta-Percha as a total solution.



1. As compared to Dentsply Sirona Calamus®; data available. 2. As compared to Dentsply Sirona Calamus® Dual; data available.

\*The battery capacities of the Flow and Pack handpieces allow for them to be used up to five procedures per day on a single charge.



## Patient safety

Unlike traditional gutta-percha, our proprietary formulation is not made with natural rubber latex. It also can be used at a lower working temperature, reducing the risk of harm to the periodontal ligament (PDL), which can be associated with higher heat.



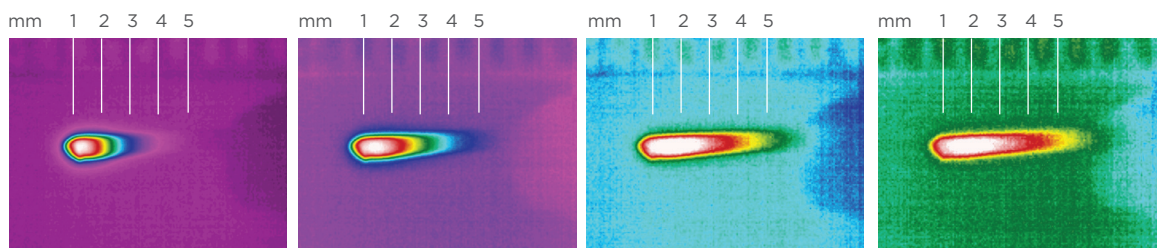
## Gutta-percha with low-temperature flow

The gutta-percha formula offers advanced thermal properties that enable it to flow at a lower temperature — and allow heat transfer up to 5 mm. Its unique formula also offers optimal radiopacity and ease of retreatment.

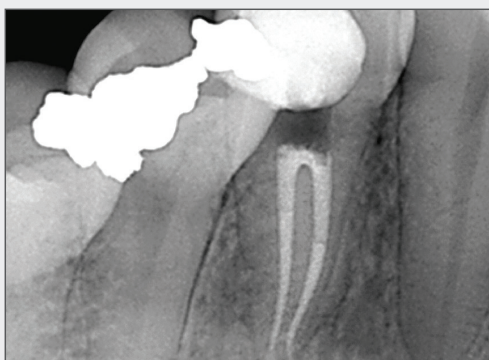
### Advanced thermal properties

Heat transfers up to 5 mm beyond the heat source.

Time-lapse thermal images demonstrate the heat transference within the gutta-percha.<sup>3</sup>



### Consistent fill without radiograph transition lines



Using different formulations of gutta-percha in one case can cause varying degrees of opacity.

Image courtesy of Dr. Phillip Bell, Mooresville, NC



Gutta-Smart™ and Conform Fit™ master cones feature the same advanced gutta-percha for radiographic consistency.

Image courtesy of Dr. Nathaniel Behrents, Fayetteville, AR

<sup>3</sup>. Source: Internal testing; data available.



## The right fit you can feel

Precision-matched Conform Fit™ master cones deliver a superior apical fit and accurate tug-back. Used together for a total solution, Gutta-Smart™ cartridges provide consistent tactile feedback with easier access and visibility into the canal.<sup>4</sup>

Improved heat transfer and flow at lower temperature

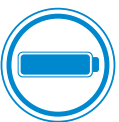
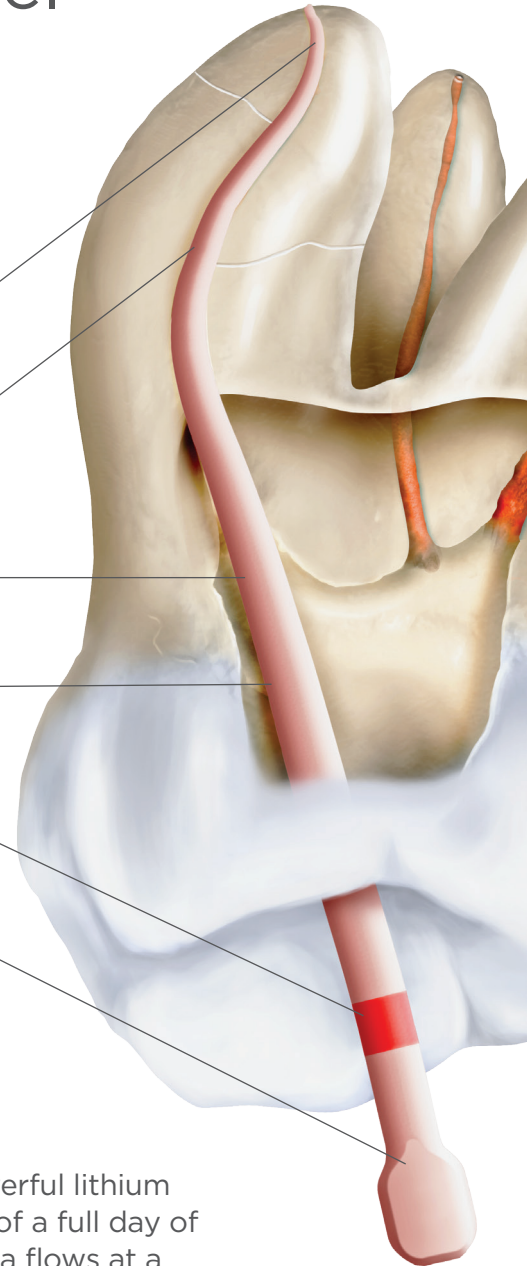
Variable taper for a precise fit and accurate tug-back

Not made with natural rubber latex for enhanced patient safety

Modern manufacturing technique for consistent shape and quality

Part of a system-based solution for simplicity

Convenient tab for easy identification and handling



## All-day power\*

The ergonomic Gutta-Smart™ handpieces feature a powerful lithium iron phosphate battery that gives you the convenience of a full day of treatments on a single charge. Because the gutta-percha flows at a lower temperature, the handpieces are ready to use in seconds.



## Durable, cordless performance

The cordless handpieces are durable and shock resistant with a lightweight, comfortable feel. Each features a 360° activation ring for freedom of movement. In addition, the heating elements are better insulated for improved patient safety.<sup>5</sup>

4. As compared to Dentsply Sirona Calamus® Dual; data available. 5. As compared to Dentsply Sirona Calamus®; data available.  
\*The battery capacities of the Flow and Pack handpieces allow for them to be used up to five procedures per day on a single charge.

# Product references

## Gutta-Smart™ and Conform Fit™ Gutta-Percha

### Gutta-Smart™ Cordless Obturation Device



Gutta-Smart™ Kit Contents	Item#
	B00GSIQ000KIT
1 Flow Handpiece	
1 Pack Handpiece	
1 Base Station	
2 Gutta-Percha Cartridges	
3 Electric Heat Pluggers	
1 Heating Element	
1 Bending Tool	
1 Power Adapter + 4 Universal Plugs	
2 Cleaning Caps	

### Gutta-Smart™ Conform Fit™ Gutta-Percha Cartridges



Description	Pack	Item#
20 gauge	10-pack	BNSGSIQA0020G
23 gauge	10-pack	BNSGSIQA0023G
25 gauge	10-pack	BNSGSIQA0025G

### Gutta-Smart™ Electric Heat Plugger



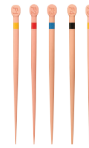
Description	Pack	Item#
Small (40/.025)	1 ea.	B00GSIQ100SML
Medium (50/.05)	1 ea.	B00GSIQ100MED
Large (60/.06)	1 ea.	B00GSIQ100LRG

### Gutta-Smart™ Thermal Response Tip



Quantity	Item#
1 TIP	B00GSIQ100000

### ProTaper Gold® Conform Fit™ Gutta-Percha



Color	Size	Pack	Item#
Yellow	F1	60-pack	B00PGGPF000F1
Red	F2	60-pack	B00PGGPF000F2
Blue	F3	60-pack	B00PGGPF000F3
Assorted	F2/F3	60-pack	B00PGGPF000F23
Assorted	F4/F5	60-pack	B00PGGPF000F45

### ProTaper Next® Conform Fit™ Gutta-Percha



Color	Size	Pack	Item#
Red	X2	60-pack	B00PNGPF000X2
Blue	X3	60-pack	B00PNGPF000X3
Black	X4	60-pack	B00PNGPF000X23
Yellow	X5	60-pack	B00PNGPF000X45

### WaveOne® Gold Conform Fit™ Gutta-Percha



Color	Size	Pack	Item#
Yellow	Small	60-pack	B00WGGPF00SML
Red	Primary	60-pack	B00WGGPF00PRI
Green	Medium	60-pack	B00WGGPF00MED
White	Large	60-pack	B00WGGPF00LRG
Assorted	S/P/M/L	60-pack	B00WGGPF00AST

All images are the property of Dentsply Sirona, Inc. unless otherwise noted.