



# Experience the new generation of intraoral products

Digital Imaging Solutions

---

THE DENTAL  
SOLUTIONS  
COMPANY™

 Dentsply  
Sirona

**PATIENT  
EXPERIENCE**

Thanks to immediate image results, you can provide better diagnostics, clearer patient communication and the best clinical outcome to the satisfaction of your customers.

**PRACTICE  
LIFESTYLE**

Benefit from high-tech tools that improve clinical workflow, make patient time more productive and create a more enjoyable, rewarding experience.

**SERVICE &  
SUPPORT**

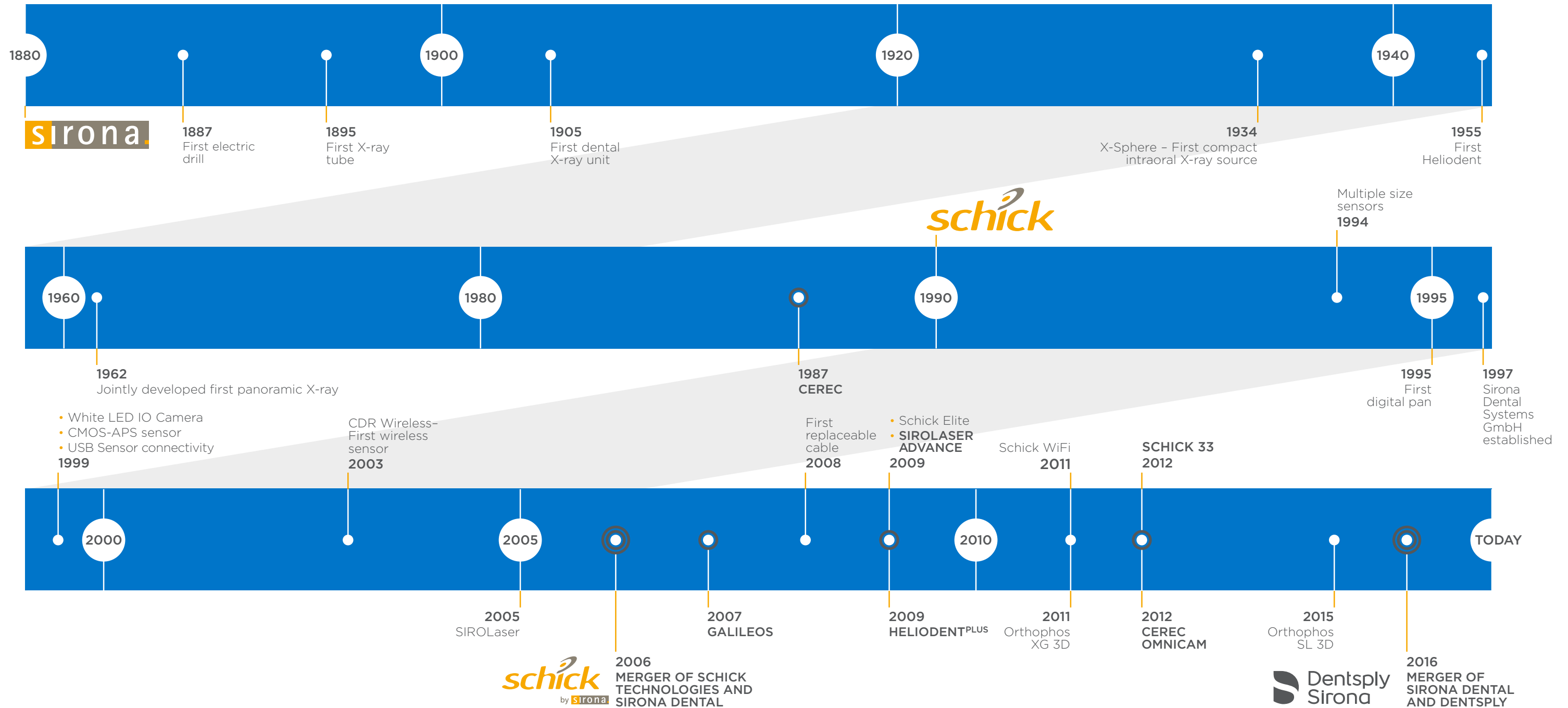
Every intraoral imaging product is supported by local tech support, in-office training, a comprehensive warranty and 100% satisfaction guarantee .

# Advanced Technology For Better Care

Dentsply Sirona's intraoral products are designed to provide you with solutions to help you make advances in digital dentistry by transforming your daily work and patient interactions. Whether you are using state-of-the-art intraoral imaging systems or advanced laser treatment devices, Dentsply Sirona's innovative technologies can enhance every part of your practice.

# A Legacy of Innovation

For more than 135 years, we've been firmly committed to develop solutions that advance the dental industry, drive success and help practices grow.



## Technology



**1885**  
First photo film



**1888**  
First film camera



**1927**  
First television



**1948**  
First instant camera



**1968**  
First personal computer



**1970**  
CCD technology  
First video camera



**1975**  
First digital black & white image with digital camera



**1990**  
World Wide Web introduced to public



**1993**  
First commercial use of CMOS



**1995**  
First DVD



**2007**  
iPhone



**2012**  
Google Glass



# Dentists value our innovative difference

“Sirona products  
**elevate the  
standard of cares**  
we can offer  
our patients.”

As a driving force behind technical progress in dentistry, Dentsply Sirona has been serving dental practices with innovative, industry-leading solutions for years. We are the world's largest manufacturer of dental technology with products marketed in more than 135 countries, supported by a workforce exceeding 15,000, including more than 260 engineers and scientists.

Dentsply Sirona's continued success is strongly influenced by the trust and confidence our customers place in our products and service year after year. Here's what they have to say.

“Investing in Sirona's products  
was the best decision I have  
made for my practice in 15 years.”

“When I saw the image  
quality of Schick 33, I was  
**BLOWN AWAY. There is  
really no comparison.**  
The 33 image is so much  
more clear and crisp.”

“Patients love that I am investing  
in my practice and providing the  
best possible care that I can.”

“I can diagnose  
caries from across  
the room.”

“The Schick AimRight positioning  
system helps my staff cut down on  
the guesswork and deliver  
consistent, repeatable diagnostic  
images on every single patient.”

# Schick 33

With its theoretical resolution of 33.3 line pairs per millimeter, the Schick 33 sensor offers you one thing above all: high-resolution radiographic images with optimal contrast and without artifact that allows you to diagnose in a few seconds. This is why the Schick 33 sensor is the ideal digital diagnostic tool for direct use in the treatment room. Schick 33 offers modern high-grade intraoral sensors.



Schick 33 provides exceptionally clear images, which makes the diagnostic process more efficient and accurate.



### 3 Sensor Sizes

Accommodate a full range of patients, including children. Schick 33 is available in all three sizes (0, 1 and 2).

### High-Resolution Imaging

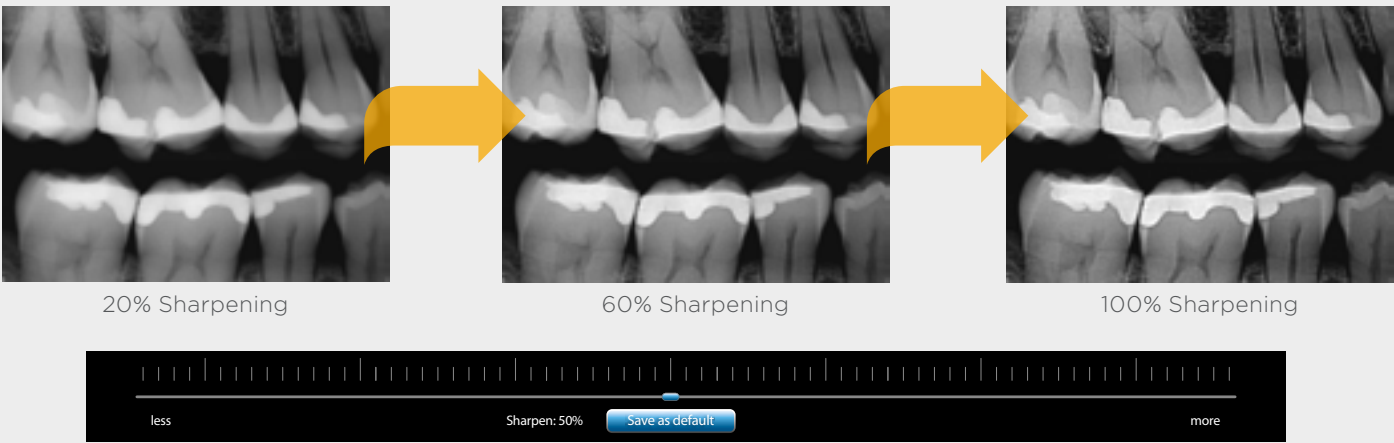
The Schick 33 intraoral sensor provides a theoretical resolution of 33 line pairs per millimeter for consistent delivery of detailed images and advanced diagnostic capabilities.

### Interchangeable Cable Technology

All sensors use replaceable cable technology. Available in 3 ft., 6 ft. and 9 ft. to fit your unique operatory needs.

## Dynamic Image Enhancement

Maximize Schick 33's true diagnostic potential with image management control capabilities. Dynamically enhance images, manipulate sharpness and use clinical-specific views to see images that best suit your individual needs.



## Diagnostic task presets



## Schick 33 Technical Data

SENSORS	
Sensor 0: Pixel count	1.9 MP
Sensor 0: Overall dimensions	23.6 x 32 x 7.5 mm
Sensor 1: Pixel count	2.7 MP
Sensor 1: Overall dimensions	25.4 x 38.3 x 7.5 mm
Sensor 2: Pixel count	4.1 MP
Sensor 2: Overall dimensions	31.2 x 43 x 7.5 mm
Physical pixel size	15 µm
Theoretical resolution	33.3 lp/mm
Sensor cable length	3', 6' and 9'
USB MODULE	
USB port of USB module	Version 2.0
Power supply	USB port

# Modular platform to better fit your practice

### Robust Sensor Interface

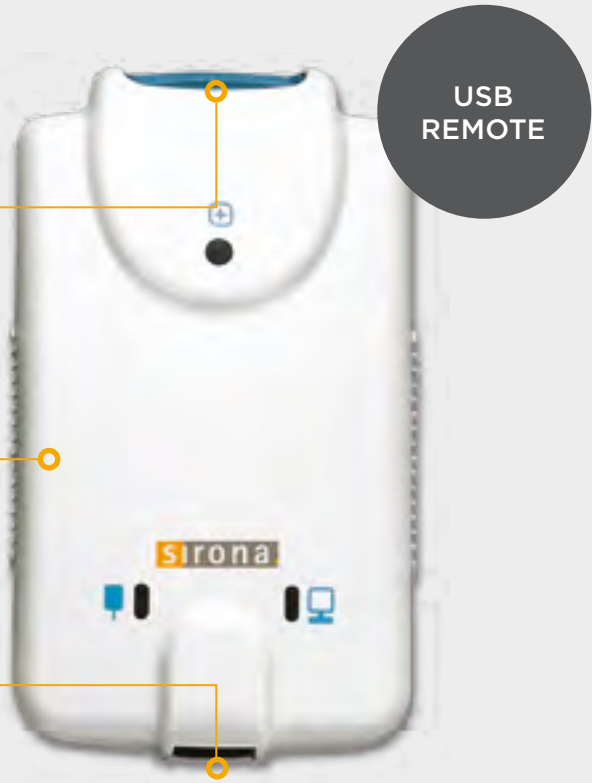
Highly rated connector, greater than 20,000 insertion cycles, more durable than a standard USB connection.

### Intelligent Design

Remote firmware can be upgraded to address future advances in technology.

### Remote Installation

Sensor interface can be mounted up to 15 feet away from computer.



# Schick Elite

Schick Elite is the economical solution that offers an exceptional workflow. The different sensor sizes offered and its simple operation make Schick Elite a digital sensor that offers flexibility and reliability with a high image quality that will perfectly support your diagnosis.

### 3 Sensor Sizes

Meet the needs of every patient.

### Interchangeable Cable Technology

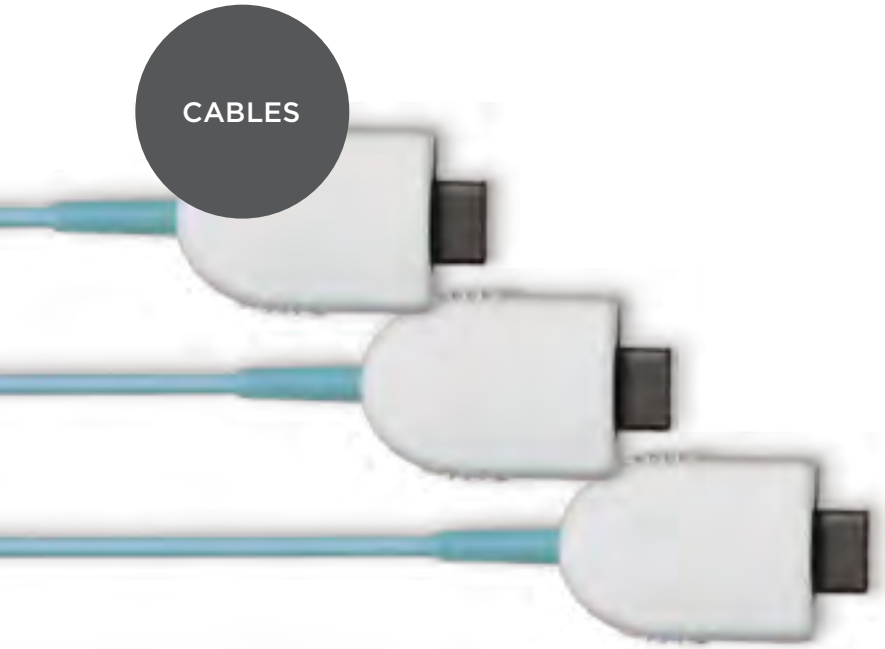
Choose from 3 ft., 6 ft. or 9 ft. lengths.

### Connectivity

Available in USB options.



### CABLES



### 3 Different Lengths

Choose from 3 ft., 6 ft. or 9 ft. to meet your individual needs.

### Kink Resistant

Kevlar reinforced, silicon-coated cable for increased durability.

### Interchangeable Cable Technology

Switch out cables quickly and easily.

Schick Elite images provide bold bone trabeculation, crisp lamina dura and a clear, clean DEJ to meet the diagnostic needs of every clinician.

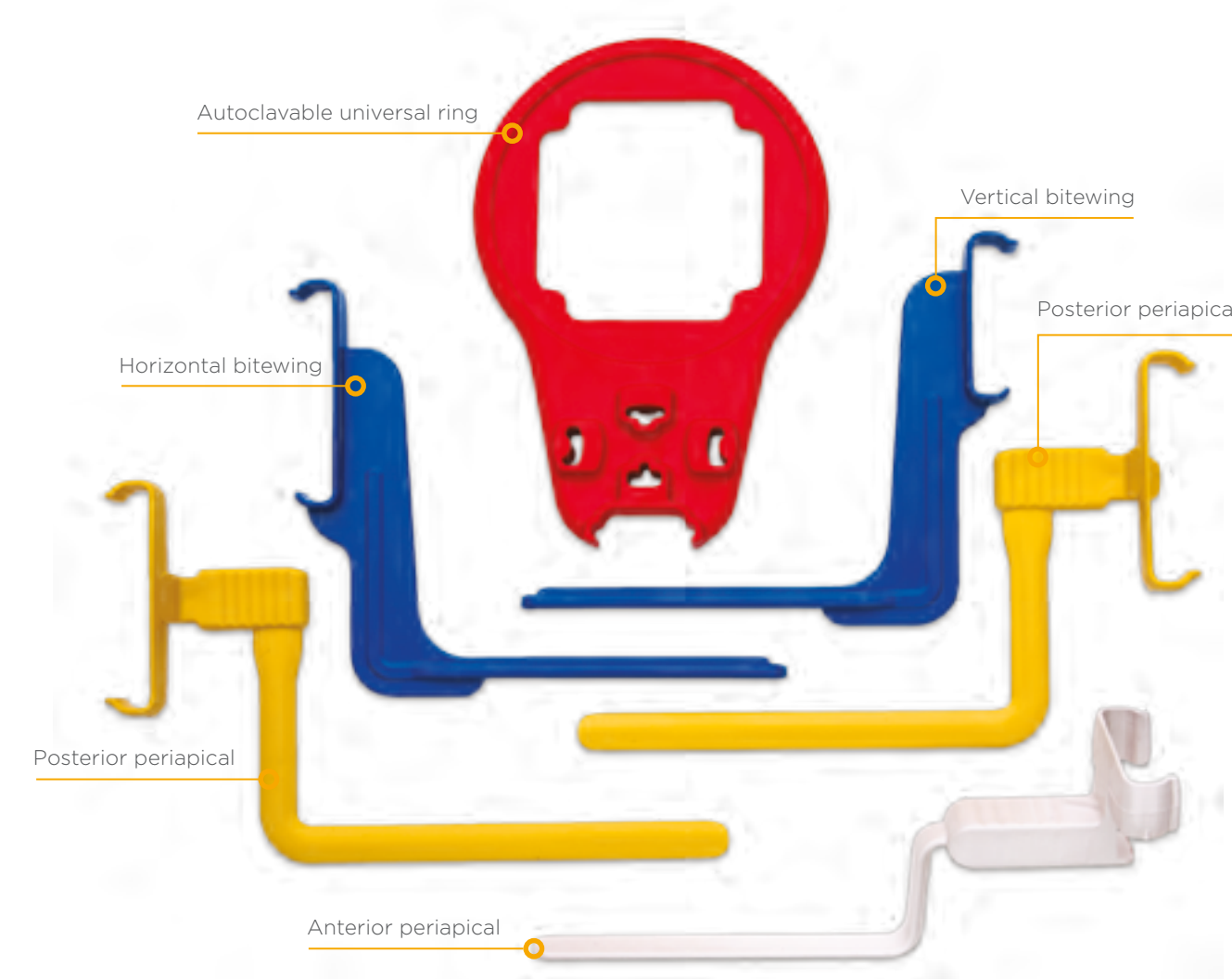
### Schick Elite Technical Data

SENSORS	
Sensor 0: Pixel count	0.48 MP
Sensor 0: Overall dimensions	23.5 x 32 x 6.3 mm
Sensor 1: Pixel count	0.68 MP
Sensor 1: Overall dimensions	25.3 x 38.4 x 6.3 mm
Sensor 2: Pixel count	1.25 MP
Sensor 2: Overall dimensions	31.2 x 43.9 x 6.3 mm
Physical pixel size	30 µm
Theoretical resolution	16.7 lp/mm
Sensor cable length	Up to max. 2.7 m
USB MODULE	
USB port of USB module	Version 2.0
Power supply	USB port



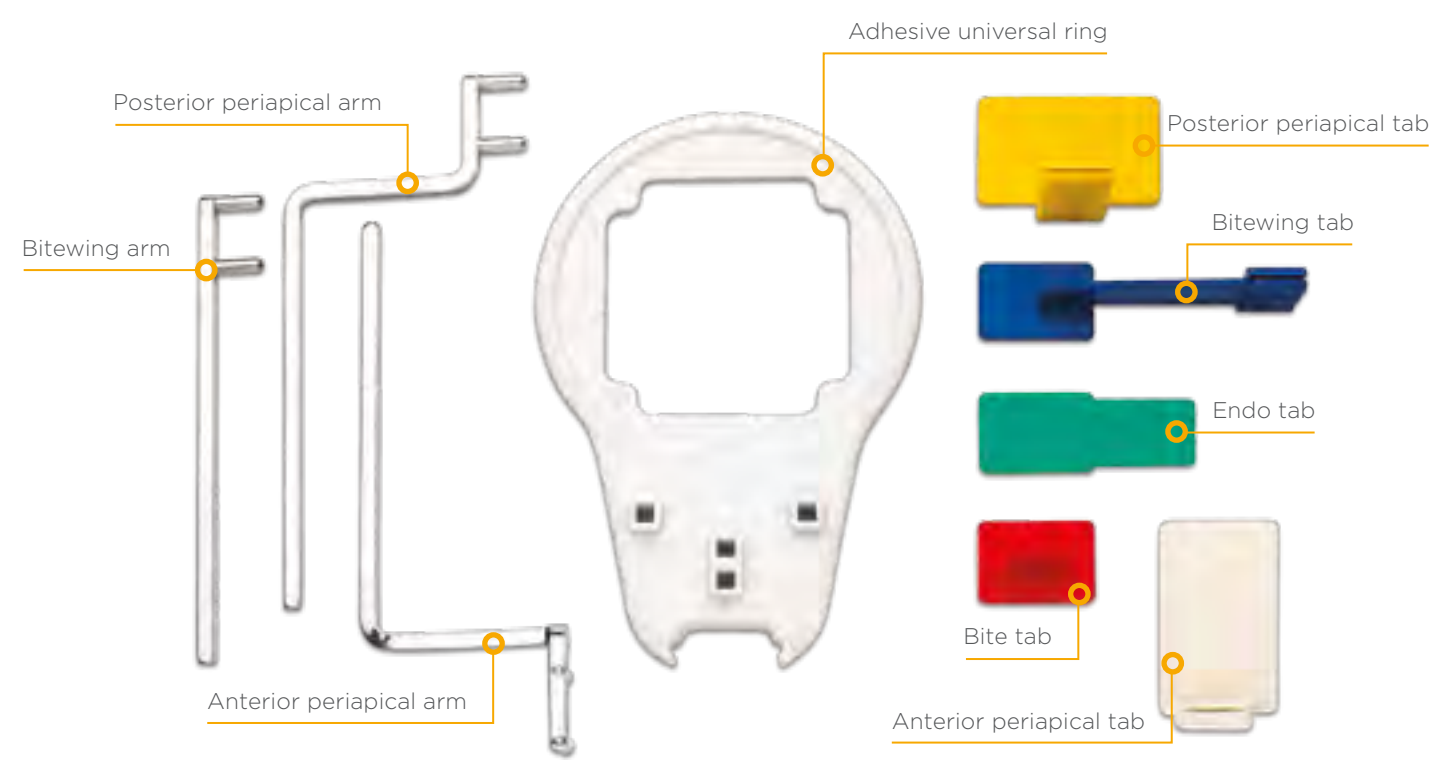
# AimRight Positioning Systems

Obtain properly oriented images easily and effectively with the system designed for optimal sensor placement and patient comfort.



## Autoclavable Positioning System

Featuring a universal aiming ring, unique integrated arm and holder design, this system makes assembly and repeatable positioning easy.



## Adhesive Positioning System

Maximize comfort and convenience without adding to sensor dimensions. Used in multiple configurations, this disposable system is suitable for all patients regardless of oral cavity size or structure.

AimRight Positioning System Product Codes

AUTOCLAVABLE SENSOR HOLDERS	QTY	SIZE/COLOR	PART#
AimRight Autoclavable Starter Kit		Size 2	B1074230
AimRight Autoclavable Starter Kit		Size 1	B1074130
REFILL PACKS			
AimRight Universal Ring	1	Red	B1074051
AimRight Horizontal Bitewing Autoclavable Holders S2	2	Blue	B1074251
AimRight Vertical Bitewing Autoclavable Holders S2	2	Blue	B1074252
AimRight Anterior Periapical Autoclavable Holders S2	2	White	B1074253
AimRight Posterior Periapical Autoclavable Holders S2	4	Yellow	B1074254
AimRight Horizontal Bitewing Autoclavable Holders S1	2	Blue	B1074151
AimRight Vertical Bitewing Autoclavable Holders S1	2	Blue	B1074152
AimRight Anterior Periapical Autoclavable Holders S1	2	White	B1074153
AimRight Posterior Periapical Autoclavable Holders S1	4	Yellow	B1074154
ADHESIVE SENSOR HOLDERS			
Adhesive Universal Starter Kit (includes 1 ring, 3 aiming arms, and 15 of each adhesive tab)	1		B1074330
REFILL PACKS			
Adhesive Positioning System Ring	1	White	B1073110
Adhesive BiteTab Holders	50/pkg	Red	B1073051
Adhesive Bitewing Holders	50/pkg	Blue	B1073052
Adhesive Endodontic Holders	50/pkg	Green	B1073053
Adhesive Anterior Periapical Holders	50/pkg	White	B1073054
Adhesive Posterior Periapical Holders	50/pkg	Yellow	B1073055
AimRight Endodontic Holder System	20/pkg	Beige	B1073056



# USBCam4

The perfect blend of portability and advanced imaging

Take digital diagnostics and patient education to the next level with this lightweight, compact intraoral camera. Featuring high-quality images and one-click image capture, it is an exceptional tool for improving patient understanding and compliance.



8 high-quality LED lights  
Provide superb clarity and color.

Standard USB Connection  
No capture card required.

Universal Fixed Focal Range  
Capture crisp and clear images in extreme close-up.

Lightweight and Ultra-Portable  
Easily transfer between operatory rooms without operator fatigue.

Multiple Mounting Options  
Flexible installation in any operatory.

Easy Integration  
Use in conjunction with Schick 33 and Elite sensors or as a standalone.

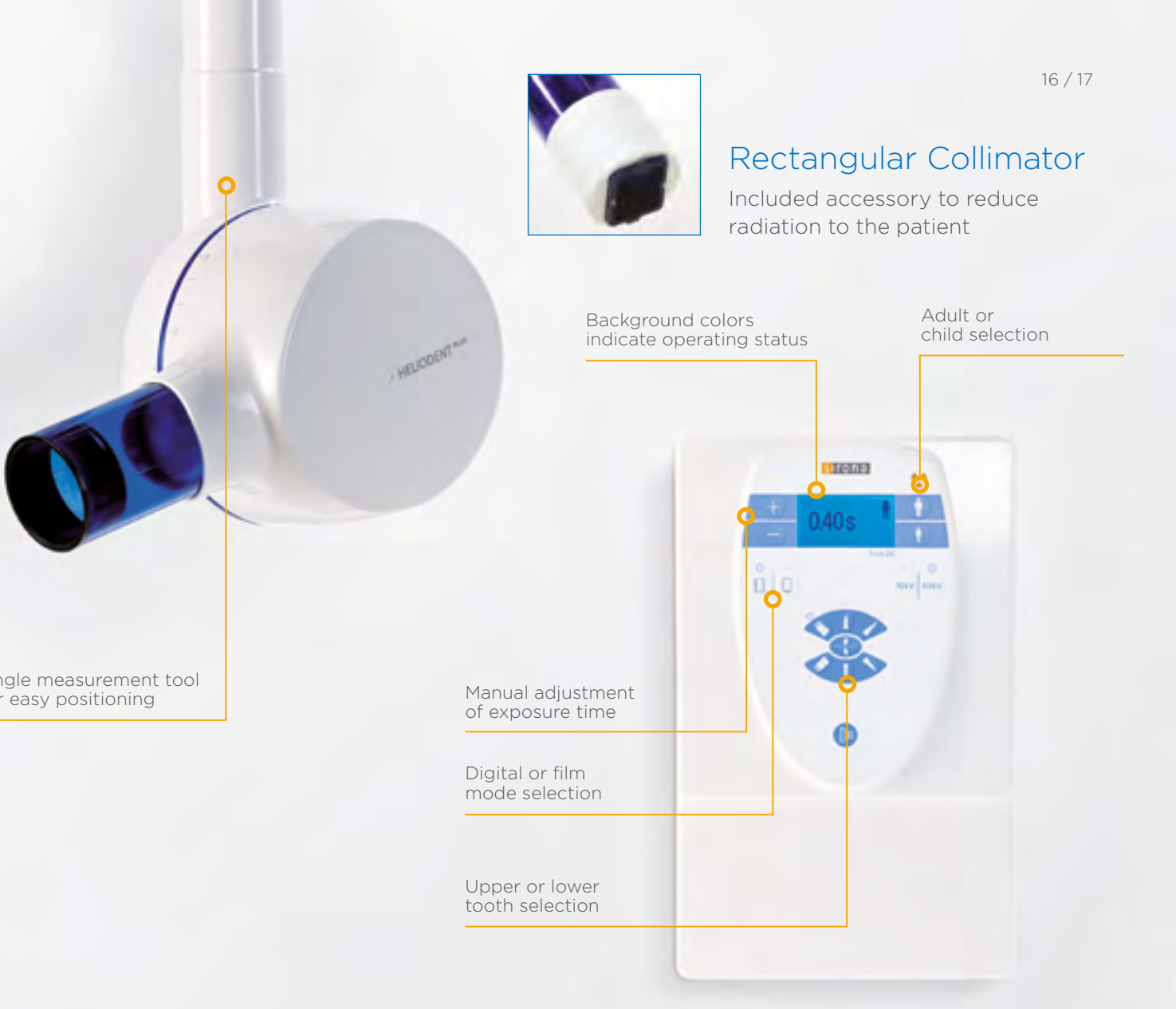
USBCam4 Technical Data

Imager	CCD
Video output	High-speed USB 2.0
Focus range	5-45 mm
Focus type	Fixed
Cable length	5 m
Resolution	640 x 480
Weight	45 g
Features	Integrated frame capture button; chair/table-mounted holder with on/off capability



# HELIODENT<sup>PLUS</sup>

HELIODENT<sup>PLUS</sup> is the latest generation of intraoral X-ray generator for digital and film-based imaging. The HELIODENT<sup>PLUS</sup> features quick and safe operation that enhances your practice workflow.



## Available Installation Options

### Remote Timer

Separates the imaging controls from the unit.

### Remote Control

Separates the exposure button from the unit.

### Exposure Release Button

10' coiled cord exposure button.

### Optimized For Digital Imaging

Small focal spot generator with preprogrammed digital sensor settings.

### Ease of Use

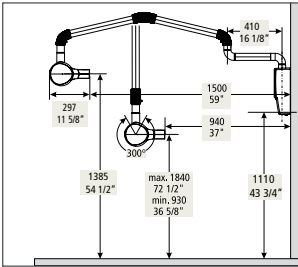
User-friendly interface with preprogrammed settings for better workflow.

### Multiple Configurations

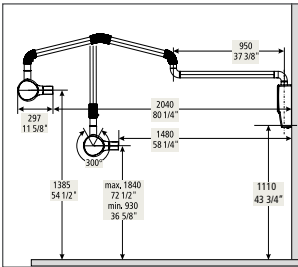
Three different arm lengths and remote control features allow for an installation in any operatory.

## HELIODENT<sup>PLUS</sup> Technical Data

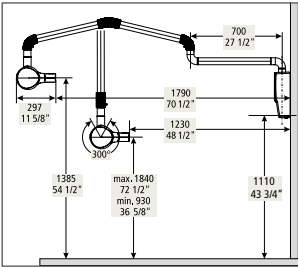
Generator type	High-frequency generator for constant high voltage
Tube voltage	Adjustable between 60 kV and 70 kV
Tube current	7 mA
Focal spot	0.4 (IEC 336)
Line voltage	120-240 V $\pm$ 10% without switching, 50/60 Hz
Exposure time	Incrementally adjustable from 0.01 to 3.2 s
Detector media	Preset for film, digital sensors, Phosphor plate system and other systems
Display	Multicolored display to show the different system states
Focus-to-skin distance	Standard 8", optional 12"
Installation options	Wall installation with 3 support arm lengths, installation remote control and remote timer



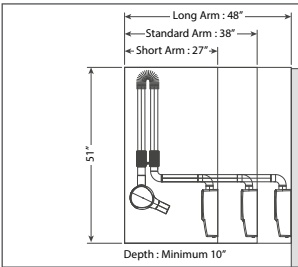
HELIODENT<sup>PLUS</sup> with short arm



HELIODENT<sup>PLUS</sup> with long arm



HELIODENT<sup>PLUS</sup> with standard arm



HELIODENT<sup>PLUS</sup> pass-through dimensions

# SIDEXIS 4 Software

Future-proof your practice with today's newest digital imaging solutions



Yesterday's technology brought us here, now let's see how far we can go with the leading software and hardware from Dentsply Sirona. Engineered with complete compatibility in mind, Sidexis 4 and Schick 33 provide a multitude of benefits that keep your practice relevant and ready to handle any patient case.

## Integrated workflows

Much more than just x-ray software, Sidexis 4 serves as a platform for integrated solutions from Dentsply Sirona, opening the door to many options including implantology, functional diagnostics, and sleep apnea therapy, among others.

## Single Platform

Sidexis 4 allows you to view 2D and 3D images at the same time and to display them next to each other without switching between programs. This saves time and cross-comparisons give you a reliable basis when making diagnoses and carrying out treatments.

## Modern, intuitive design

Sidexis 4 offers a completely new and modern look. And beneath the exterior, the software also impresses with an intuitive operating philosophy and clearly structured design.



# Optimized Workflow with a Clear Structure

For clear diagnoses, look no further than Sidexis 4. It efficiently structures your workflow from beginning to end, giving you everything you need to detect, diagnose, and discuss treatment planning at a glance.

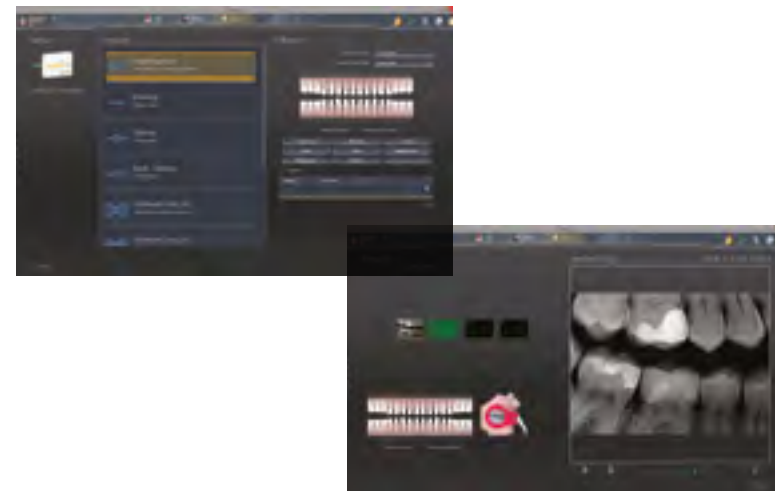
## Detect

Remarkable image quality that prepares your practice for success now and in the future

Gain an outstanding level of resolution and control over digital images with Schick 33 intraoral sensors. Featuring the industry's highest theoretical resolution and lowest learning curve, it will change the way you see your images—and your practice.



With Sidexis 4 and Schick 33, you are prepared for every situation you encounter now and in the future: Workflow integration of extraoral images from Orthophos and Galileos CBCT systems provide the confidence of a future-proof practice. As your practice grows, Sidexis grows with you.



When paired with our Sidexis 4 software, your team can enjoy the ability to use the positioning guide to ensure error-proof imaging. Customizable templates and easy to adjust images aid your team in presenting a great image each and every time.



Orthophos SL 2D

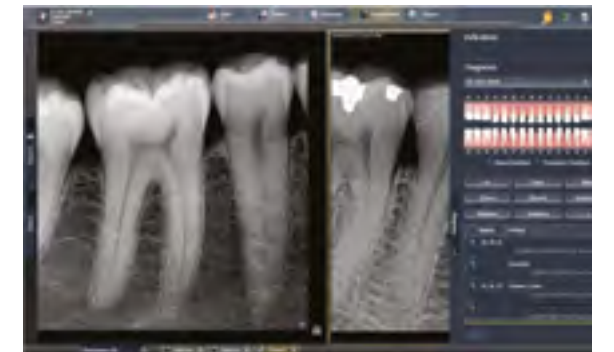


Galileos

## Diagnose

All of the clinically relevant data you need, easily accessible in one place

Working in the Light Box window, you can evaluate several images at the same time. For example, you can show clinical change over time by opening multiple images side by side in our unique compare mode. Now, several 2D panoramic and 3D volumes can be linked together to enable a comparison that was never available before.



View all your images in one convenient window - no more clicking around to find what you need.





# Discuss

## Advanced technology that simplifies life for you and your patients

When your patients clearly see and understand their need for treatment, they accept treatment without hesitation. Together, the impeccable clarity of Schick 33 images, combined with the powerful visualization tools of Sidexis 4 help facilitate patient communication in a way patients truly appreciate.



Server	Minimum	Recommended
Operating Systems	Windows 7 Pro SP1 64 bits <sup>1</sup> Windows 8.1 Pro 64 bits <sup>1</sup> Windows 10 Pro 64 bits <sup>12</sup>	Windows Server 2008 R2 64 bit Windows Server 2012 R2 64 bit
RAM	≥ 4 GB	≥ 8 GB
CPU	≥ 2 GHz DualCore	≥ 2.3 GHz QuadCore with 64 bits (x64)
Hard Drive	≥ 675 GB free space	≥ 1 TB free space
Network	1,000 mbps	
Graphic card with dedicated graphic memory <b>OR</b> Intel Onboard <sup>3</sup>	≥ 512 MB	≥ 1 GB
DirectX	DirectX 9.0c	DirectX 10.0 with WDDM ≥ 1.0
<div>1. Using these systems for server operation is not recommended, as they are not designed by Microsoft for this purpose.</div> <div>2. Tested Version 1607, Build 14393.693</div> <div>3. Please note that Intel Onboard graphic card has no graphic memory and uses the PC RAM.</div> <div>Installation on a domain controller requires a manual installation of SQL. Please observe the instructions in the Sidexis 4 installation manual.</div>		

Workstations	Minimum (for 2D station)	Recommended for 2D station and minimum for 3D station
Operating Systems 64 bits version supports Bootcamp	Windows 7 Pro SP1 32 bits Windows 7 Pro SP1 64 bits Windows 8.1 Pro 64 bits Windows 10 Pro 64 bits <sup>1</sup>	Windows 7 Pro SP1 64 bits Windows 8.1 Pro 64 bits Windows 10 Pro 64 bits <sup>1</sup>
RAM	≥ 4 GB	≥ 8 GB
CPU	≥ 2 GHz DualCore	≥ 2.3 GHz QuadCore with 64 bits (x64)
Hard drive	≥ 5 GB	
Graphic card with dedicated graphic memory <b>OR</b> Intel Onboard <sup>2</sup>	≥ 512 MB	≥ 1 GB
Screen Resolution	1280 x 1024 pixels	1600 x 1200 pixels
DirectX	DirectX 9.0c	DirectX 10.0 with WDDM ≥ 1.0
<div>1. Tested Version 1607, Build 14393.693</div> <div>2. Please note that Intel Onboard graphic card has no graphic memory and uses the PC RAM.</div> <div>In order for the interaction with the 3D rendered volume to be reliable, graphic cards are recommended with at least the following Passmark GPU benchmark values: NVIDIA : Passmark &gt; 1000    ATI : Passmark &gt; 4500    Intel Onboard : Passmark &gt; 540 The Passmark value can be verified at <a href="http://www.passmark.com">www.passmark.com</a> if the name of the graphic card is known.</div>		

# Dentsply Sirona Digital Integration


Our practice integration equips you with a team of digital components that work together to help you more thoroughly assess a patient's needs and deliver better patient care. Our suite of products is designed to grow with you and your practice.

While our digital integration enhances your patient's experience, it also enhances yours.

ENHANCED PATIENT EXPERIENCE

**2D IMAGING**

High-definition digital intraoral imaging lays the foundation for effective treatment, making Schick 33 digital intraoral sensors the perfect entry point to the Dentsply Sirona product family.



2D IMAGING

**CAD/CAM**

With the addition of Dentsply Sirona's CEREC CAD/CAM system to your 2D imaging capabilities, you can give patients the best possible treatment with single-visit restorations, digital orthodontics, and integrated implantology.



+ CAD/CAM



2D IMAGING

**3D IMAGING**

Want even more? Add Dentsply Sirona's 3D imaging tools to your existing 2D imaging and CEREC CAD/CAM system to give you enhanced options for diagnosis, treatment planning, and patient consultation across a broad range of services and specialties.



+ 3D IMAGING




+ CAD/CAM




2D IMAGING

**TREATMENT CENTERS**


To give your patients the best possible dental experience, add a complete treatment center to your existing CEREC CAD/CAM and 3D imaging system. Dentsply Sirona treatment centers integrate and optimize every component of Dentsply Sirona's digital dentistry family, maximizing your efficiency, productivity and ROI.




+ TREATMENT CENTER



+ 3D IMAGING



+ CAD/CAM



2D IMAGING

INCREASED PRACTICE INTEGRATION

## Dentsply Sirona: The Dental Solutions Company

Dentsply Sirona, the technology and innovation leader in dentistry, has served dentists worldwide for more than 135 years. Dentsply Sirona develops, manufactures and markets a complete line of dental products, including CAD/CAM restoration systems [CEREC], CBCT imaging systems [GALILEOS], extraoral imaging systems, digital intraoral imaging technology [SCHICK], dental treatment centers and hand instruments. Visit [www.SchickbySirona.com](http://www.SchickbySirona.com) for more information about Dentsply Sirona and its products.