

Ordering Information

Neo Spectra™ ST Universal Composite Restorative

HIGH VISCOSITY

Compules® Tips Intro Kit (HV) **607.01.970**
24 HV Compules® Tips (Gray) Assorted - (0.25 g each)
(4 x A1; 4 x A2; 8 x A3; 4 x A3.5; 4 x A4)

1 Compules® Tips Gun
i-shade label
1 Bottle Prime&Bond Universal™ Adhesive (2.5 mL)
Accessories

Syringe Intro Kit (HV) **607.01.980**
5 HV Syringes (Gray) Assorted - (3 g each)
(A1; A2; A3; A3.5; A4)
i-shade label

1 Bottle Prime&Bond Universal™ Adhesive (2.5 mL)
Accessories

Syringe Eco Kit (HV) **607.01.990**
6 HV Syringes (Gray) Assorted - (3 g each)
(3 x A2; 3 x A3)
i-shade label

1 Bottle Prime&Bond Universal™ Adhesive (2.5 mL)
Accessories

Refills (HV)	Compules® Tips	Syringe
Shades	(16 x 0.25 g)	(1 x 3 g)
A1 (= VITA® shades A1; B1; C1)	607.01.971	607.01.981
A2 (= VITA® shades A2; B2; D2)	607.01.972	607.01.982
A3 (= VITA® shades A3; C2; D3; D4)	607.01.973	607.01.983
A3.5 (= VITA® shades A3.5; B3; B4; C3)	607.01.975	607.01.985
A4 (= VITA® shades A4; C4)	607.01.974	607.01.984
BW (Bleach White)	607.01.976	

LOW VISCOSITY

Compules® Tips Intro Kit (LV) **607.01.870**
24 LV Compules® Tips (Blue) Assorted - (0.25 g each)
(4 x A1; 4 x A2; 8 x A3; 4 x A3.5; 4 x A4)

1 Compules® Tips Gun
i-shade label
1 Bottle Prime&Bond Universal™ Adhesive (2.5 mL)
Accessories

Syringe Intro Kit (LV) **607.01.880**
5 LV Syringes (Blue) Assorted - (3 g each)
(A1; A2; A3; A3.5; A4)
i-shade label

1 Bottle Prime&Bond Universal™ Adhesive (2.5 mL)
Accessories

Syringe Eco Kit (LV) **607.01.890**
6 LV Syringes (Gray) Assorted - (3 g each)
(3 x A2; 3 x A3)
i-shade label

1 Bottle Prime&Bond Universal™ Adhesive (2.5 mL)
Accessories

Refills (LV)	Compules® Tips	Syringe
Shades	(16 x 0.25 g)	(1 x 3 g)
A1 (= VITA® shades A1; B1; C1)	607.01.871	607.01.881
A2 (= VITA® shades A2; B2; D2)	607.01.872	607.01.882
A3 (= VITA® shades A3; C2; D3; D4)	607.01.873	607.01.883
A3.5 (= VITA® shades A3.5; B3; B4; C3)	607.01.875	607.01.885
A4 (= VITA® shades A4; C4)	607.01.874	607.01.884
BW (Bleach White)	607.01.876	

Compules® Tips Gun **606.65.900**
1 Compules® Tips Gun

Neo Spectra™ ST Effects Universal Composite Restorative

Compules® Tips Intro Kit **607.01.940**
24 HV Compules® Tips (Gray) Assorted - (0.25g each)
(12 x D1; 8 x D3; 4 x E1)

Illustrated Technique Guide
i-shade label

Syringe Intro Kit (HV) **607.01.950**
3 HV Syringes (Gray) Assorted - (3 g each)
(1 x D1; 1 x D3; 1 x E1)
Illustrated Technique Guide
i-shade label

Refills (HV)	Compules® Tips	Syringe
Shades	(16 x 0.25 g)	(1 x 3 g)
D1 (use with A1; A2)	607.01.942	607.01.952
D3 (use with A3; A3.5; A4)	607.01.943	607.01.953
E1 (use with A1; A2; A3; A3.5; A4)	607.01.941	607.01.951

Neo Spectra™ ST flow Flowable Composite Restorative

Compula® Tips Introductory Kit **607.01.910**
24 Compula® Tips (0.25 g ea)
(4 x A1; 4 x A2; 8 x A3; 4 x A3.5; 4 x A4)
1 Bottle Prime&Bond Universal™ Adhesive (2.5 mL)
Accessories
Compules Tips Gun
i-shade label

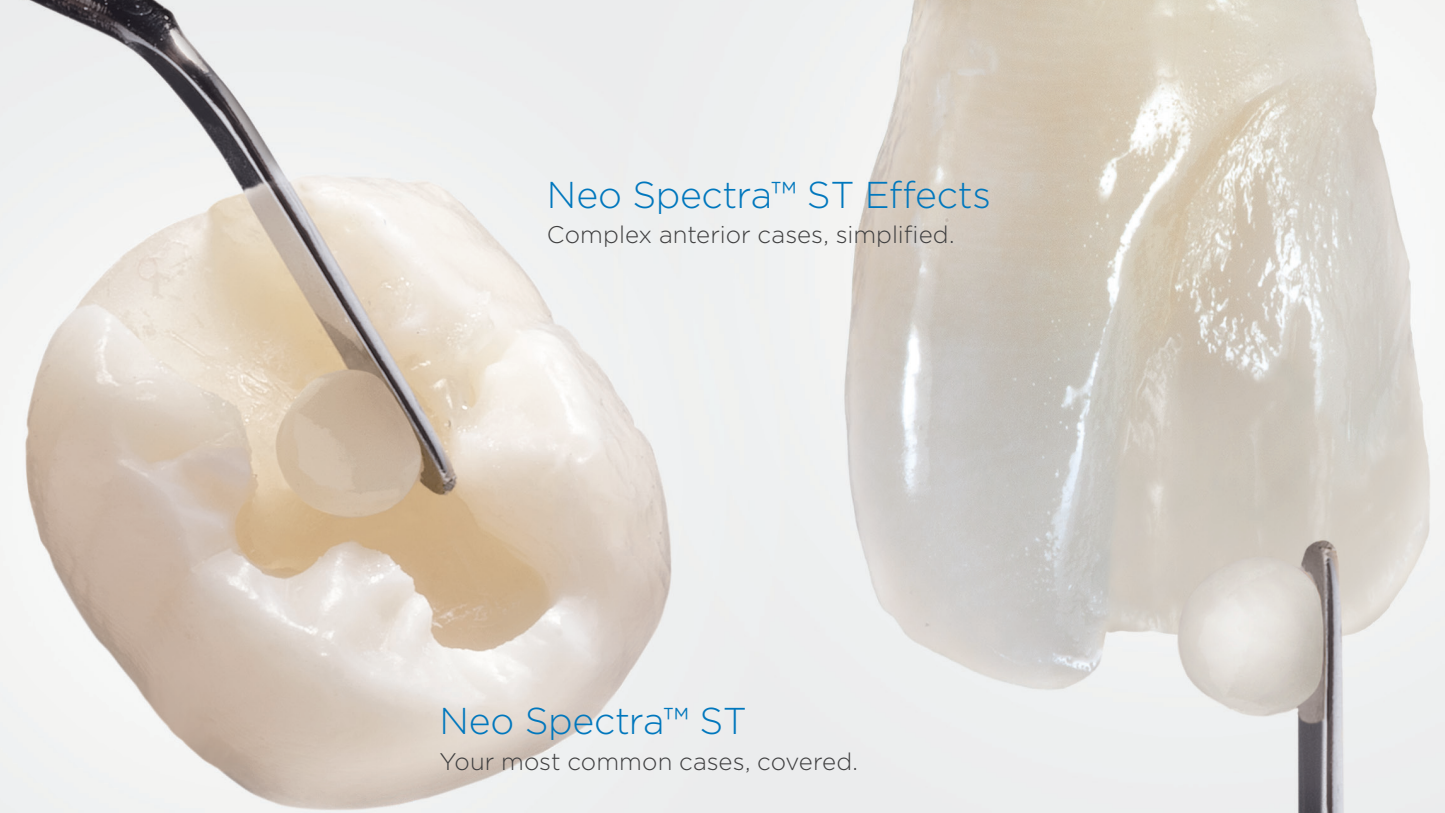
Syringe Introductory Kit **607.01.920**
5 Syringes (1.8 g each)
(A1; A2; A3; A3.5; A4)
1 Bottle Prime&Bond Universal™ Adhesive (2.5 mL)
i-shade label
50 Syringe Tips
Accessories

Refills	Compula® Tips	Syringe
Shades	(16 x 0.25 g)	(2 x 1.8 g + 25 Syringe Tips)
A1 (= VITA® shades A1; B1; C1)	607.01.911	607.01.921
A2 (= VITA® shades A2; B2; D2)	607.01.912	607.01.922
A3 (= VITA® shades A3; C2; D3; D4)	607.01.913	607.01.923
A3.5 (= VITA® shades A3.5; B3; B4; C3)	607.01.915	607.01.925
A4 (= VITA® shades A4; C4)	607.01.914	607.01.924
BW (Bleach White)	607.01.916	607.01.926
D1 (Opaque Dentin)	607.01.918	607.01.928
D3 (Opaque Dentin)	607.01.919	607.01.929
E1 (Translucent Enamel)	607.01.917	607.01.927

Syringe Tips Refill **607.01.932**
50 syringe tips

Neo Spectra™ ST Shade Guide **607.01.869**
1 shade guide holder
9 shade guide tabs (A1, A2, A3, A3.5, A4, BW, D1, D3, E1)

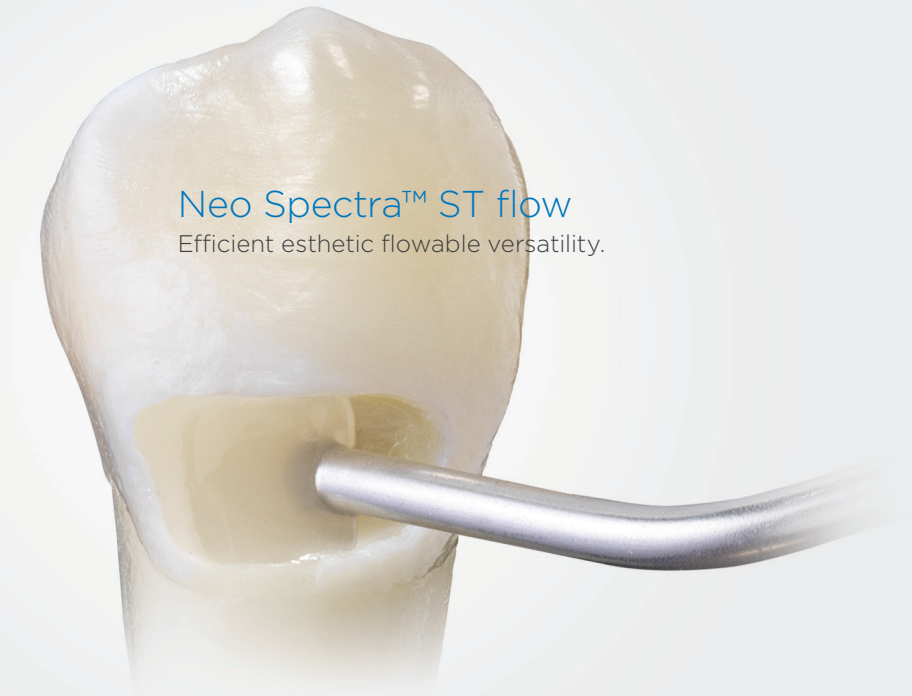
To learn more about the Neo Spectra™ ST portfolio, visit www.dentsplysirona.com/NeoSpectraST-composites



Neo Spectra™ ST Effects
Complex anterior cases, simplified.

Neo Spectra™ ST
Your most common cases, covered.

Efficient esthetics with Neo Spectra™ ST composites.



Neo Spectra™ ST flow
Efficient esthetic flowable versatility.

Our decades of innovation in composite materials taught us what matters most to dentists.



Handling



Esthetics



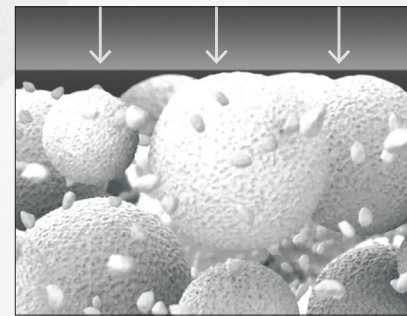
Longevity

SphereTEC® Filler Technology

Magnification of a 15 micron diameter SphereTEC® filler particle

Neo Spectra™ ST composites excel where it counts thanks to SphereTEC® filler technology.

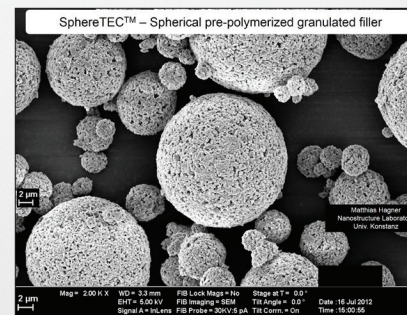
Key performance advantages of Neo Spectra™ ST composites were made possible with SphereTEC® filler technology. The SphereTEC® fillers' morphology, particle size distribution, and surface microstructure deliver the benefits that matter most to dentists.



Optimized Handling

Easy handling is essential to placement efficiency. The shape and size distribution of SphereTEC® fillers creates a ball-bearing like effect that enables excellent adaptation and sculptability. And they bind more free resin than usual fillers to avoid stickiness.

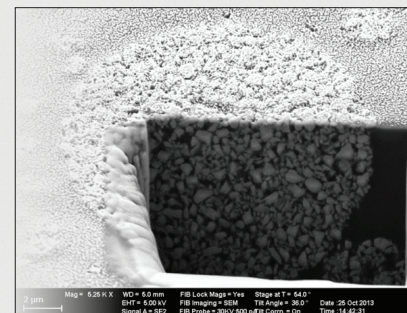
SPHERICAL



Simplified Esthetics

Natural esthetics should be easy to create. SphereTEC® fillers are uniquely constructed to balance opacity, translucency, light absorption, and scattering for an excellent chameleon effect. Their microstructure enables a fast polish to a high gloss.

MICRO-SCALED



Reliable Longevity

Durable results promote profitability and reputation. High filler packing density plus micro-mechanical locking of our resin and fillers deliver material strength and durability. And our resin infiltrated, prepolymerized filler design enables sophisticated stain resistance.

SUPERSTRUCTURES

Simplify every restoration with Neo Spectra™ ST composites featuring SphereTEC® technology

Your most common cases, covered.



Neo Spectra™ ST Universal Composite Restorative

Experience the ease of optimized handling in your ideal viscosity with five universal CLOUD shades that cover the full VITA®1 range.



Complex anterior cases, simplified.



Neo Spectra™ ST Effects Universal Composite Restorative

Featuring two additional opacities that work together in a simplified layering system with 5 Neo Spectra™ ST universal CLOUD shades.



Efficient esthetic flowable versatility.



Neo Spectra™ ST flow Flowable Composite Restorative

Versatile flow-on-demand handling with shades perfectly matched to our universal composite portfolio.



Your preferred handling

Two Universal Composite Handling Options

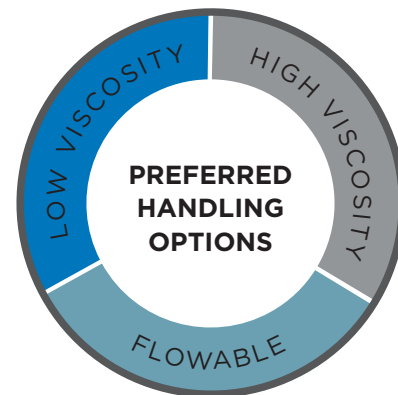
Thanks to SphereTEC® filler technology, Neo Spectra™ ST composite offers optimized handling in a creamy and spreadable low viscosity or a firm and packable high viscosity to accommodate your preference and technique for placement efficiency.

- Doesn't stick to hand instruments
- Adapts easily to cavity surfaces
- Easy to sculpt and shape
- Excellent slump resistance



74%

of dentists complain about handling properties of composites such as adaptability and stickiness.²



Versatile Flowable Composite Handling

For traditional flowable indications in the smile line, Neo Spectra™ ST flow material enables the esthetic performance and durability you expect from a SphereTEC® based composite in flowable form.

- Flow-on-demand handling
- Excellent cavity adaptation
- Stays where placed until instrumentation initiates flow



66%

of dentists use traditional flowables for Class Vs. On average, 1/4 of Class V restorations are in the anterior.³

Simplified esthetics

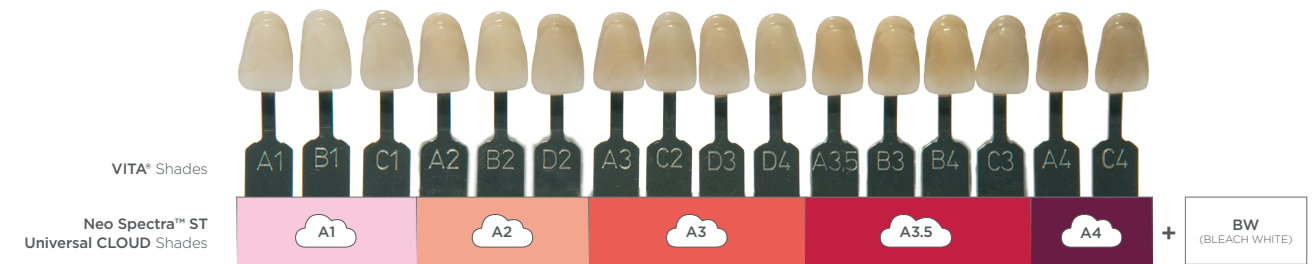
Universal CLOUD shades for common cases

SphereTEC®'s primary filler particles and resin together enable an excellent chameleon effect for simplified shade matching. One universal CLOUD shade is all you need for the majority of cases.

88%

of dentists are stocking more than five VITA® shades.⁴

- 5 universal CLOUD shades cover the full VITA®¹ range
- Reliable, accurate shade match to surrounding tooth structure
- Save money and shelf space by reducing inventory
- BW shade available for bleach white restorations



VITA® is not a registered trademark of Dentsply Sirona.

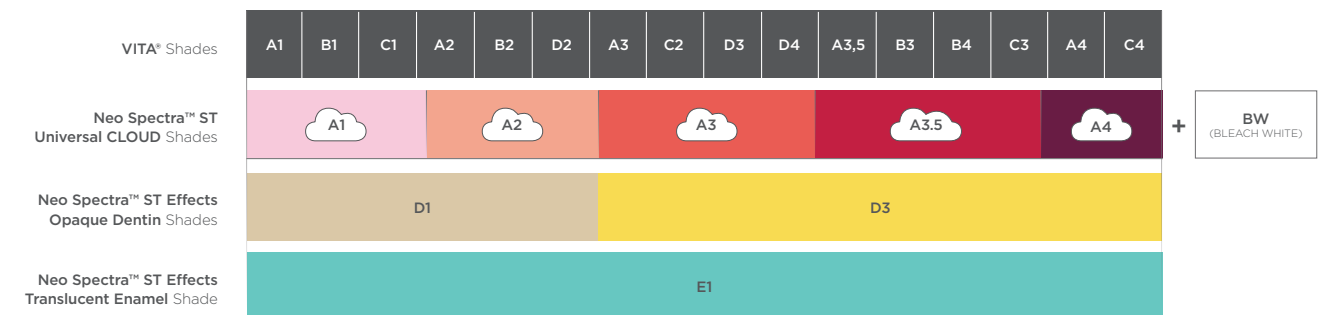
Plus dentin and enamel shades for complex anterior cases

For esthetically demanding anterior cases, Neo Spectra™ ST Effects and Neo Spectra™ ST universal CLOUD shades work together in a simplified layering technique.

Over **1/3**

of clinicians consider color matching to be the most challenging aspect of Class IV restorations.⁵

- Select one of two dentin effects shades for added opacity
- One enamel effect shade for a highly translucent incisal edge
- Simple recipes and technique for advanced esthetic results



VITA® is not a registered trademark of Dentsply Sirona.

2. Dentsply Sirona Restorative, Europe composite user survey 2015, n=297.
3. Dentsply Sirona Flowable Composite user study August 2018.

4. Aegis communications 2016 direct restorative survey (n=107).
5. 2018 The Key Group, Inc.