

Celtra® Duo

Zirconia-Reinforced Lithium Silicate (ZLS)

Developed to make a difference

Finally, a CEREC® block that gives you total control. You choose the processing pathway. You determine the level of esthetics you wish to achieve. Even the degree of strength is up to you. But the difference doesn't stop with the block! We've developed an entire solution of carefully curated restorative product essentials designed to optimize and enhance the overall CEREC treatment experience for you and your patients.

dentsplysirona.com/celtraduo

Benefits above and beyond the basics

Flexible processing options no other block can provide

- Mill and Polish or Mill and Fire

Proven high strength regardless of processing pathway

- 210MPa flexural strength (Mill and Polish) and 370MPa flexural strength (Mill and Fire)

Lifelike esthetics

- Beautiful outcomes regardless of processing pathway



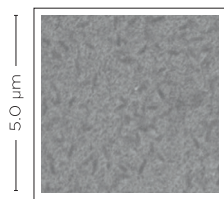
The ultra-fine microstructure makes all the difference

Celtra DUO Zirconia-Reinforced Lithium Silicate (ZLS)

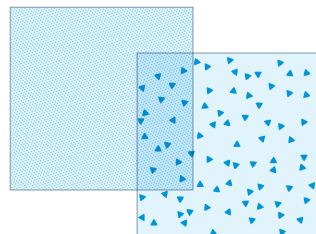
With crystallites four to eight times smaller than lithium disilicate blocks, Celtra Duo (ZLS) possesses an ultra-fine microstructure that combines high flexural strength with a high glass content, resulting in an impressive strength and beauty profile. The large number of very fine-grained lithium silicate crystallites possess a high glass content, giving the material its excellent light-optical and mechanical properties. Translucency, opalescence, fluorescence, and the chameleon effect all benefit, with high edge stability an added plus.

Microstructure comparison

ZLS Glass with completely dissolved zirconia

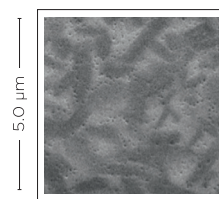


SEM image
Celtra Duo
(ZLS) milled

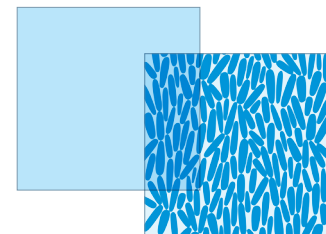


Lithium silicate
crystallites
500-700nm

LS₂ Glass



SEM image Lithium
disilicate, milled



Lithium disilicate
crystallites
2000-4000nm

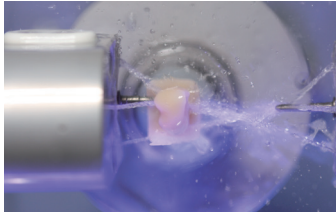
Simplicity that matters

One highly esthetic block— two processing options

With Celtra® Duo (ZLS), you're always in control, and that includes your choice of processing technique.

Option 1: Mill and Polish

(210MPa flexural strength)



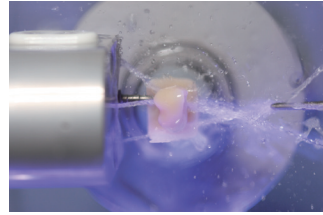
Mill



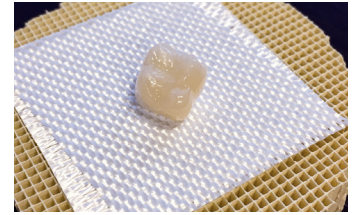
Polish

Option 2: Mill and Fire

(370MPa flexural strength)



Mill



Fire

Strength you can rely on

Median fracture strength [N]

Celtra Duo (ZLS)

No loss in strength



e.max®

31% decrease in strength



VITA® Mark II

33% decrease in strength



■ Before artificial aging
■ After artificial aging

Marginal integrity for long-term clinical confidence



Optical properties and their benefits

Lifelike appearance

Celtra Duo (ZLS) meets the highest esthetic standards: Natural opalescence, fluorescence, and pronounced chameleon effect give Celtra Duo (ZLS) restorations the appearance of natural teeth.

Celtra Duo (ZLS) Veneer



Final restoration



Simple Cementation

Simpler and easier technique

For cementation, after etching and silanating the restoration, apply Calibra® Ceram Cement. Simply etch and silanize the internal surfaces of the restoration, then apply Prime&Bond active™ Universal Adhesive and Calibra Ceram Adhesive Resin Cement for easy clean-up and proven long term reliability.

The Celtra Duo (ZLS) 3-step restoration and cementation process

STEP 1: Design and mill the restoration

STEP 2: Apply Prime&Bond active directly to the tooth

STEP 3: Apply a thin, uniform layer of Calibra Ceram Cement to the internal surface of the restoration



e.max, VITA Mark II, IPS Empress CAD, and VITABLOCKS Mark II are not registered trademarks of Dentsply Sirona. ©2017 Dentsply Sirona Inc. All rights reserved. **MLA-51N006** (3/16/17)

Rx Only
For Dental Use Only