

Adjust parameters for starting exocad®– Link to inLab software

Upon delivery of your exocad® version, the integrated module exoscan® is registered for scanning. However, this module is not compatible with the scanners from Dentsply Sirona. In order to use the inLab scanner software, you must change a parameter to start the software. Otherwise, exocad® will not find the inLab scanner software. **This process must be performed after the first installation and after each exocad update.**

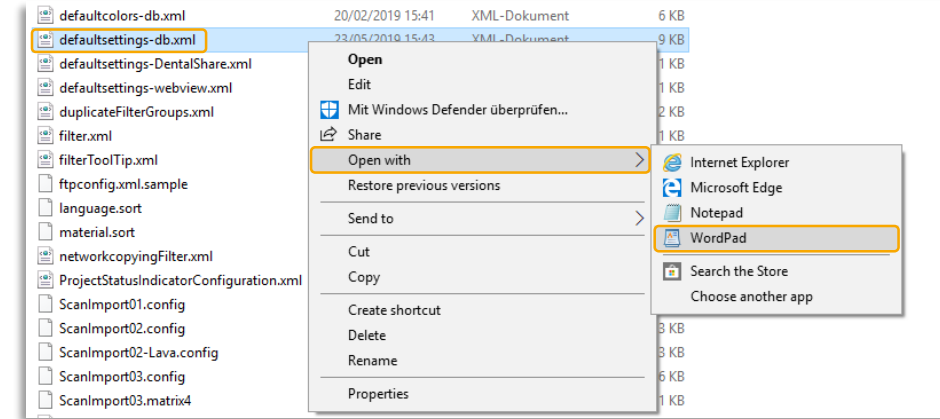
Instructions for linking the exocad® Dental DB with the inLab SW:

- Sign into windows as a user with administration rights.
- Open the installation path of the exocad® application DentalDB in the windows explorer:
 - The path is named C:\Program Files (x86)\exocadFramework\DentalDB\config
- Open the file defaultsettings-db.xml with the windows application WordPad.
- Search for the parameter “ExecPath value”.
- Enter the installation path of the inLab SW here, for standard installation it looks like this:
 - <ExecPath value="C:\Program Files\Dentsply Sirona\CADCAM\inLab SW 19\Bin\inLab.exe">
- If the scanner software is installed in another installation path, adjust your data to it.
- Note that the path notation is enclosed in double quotation marks.
- Save the file.
- ✓ You can start your inLab scanner software out of exocad® now.

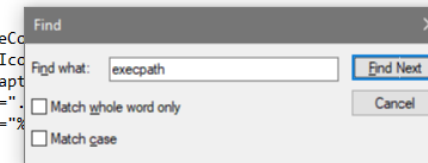
Adjust parameters for starting exocad® – Link to inLab software

-Useful hint-

- Open file „defaultsettings-db.xml“ with the windows application WordPad
- Enter the installation path of the inLab SW for the parameter ExecPath
- For standard installation it looks like this:
 - <ExecPath value="C:\Program Files\Dentsply Sirona\CADCAM\inLab SW 19\Bin\inLab.exe">



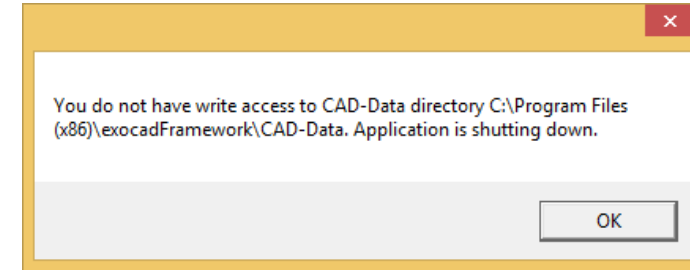
```
<StartButtonList>
<StartButton ImageColor="#FFD98000">
  <Icon>ScanIcon</Icon>
  <Caption>Scannen</Caption>
  <!-- Replace '..Scanner.exe' below by the complete path to your scanner software executable.
  Contact your scanner software supplier for info on what additional configuration / command line
  is necessary to enable exocad integration. You may need a special version of the scanner software
  to enable integration with exocad -->
  <ExecPath value="C:\Program Files\Dentsply Sirona\CADCAM\inLab SW 19 RC\Bin\inLabWin10.exe">
  <Params value="%p /MultiDiePluginDLLName=%mfn"/>
  </ExecPath>
</StartButton>
<StartButton ImageCo
<Icon>CADIcon</Icon
<Caption>CAD</Capt
<ExecPath value="
<Params value="%"
</ExecPath>
</StartButton>
```



Adjust parameters for starting exocad®– Link to inLab software

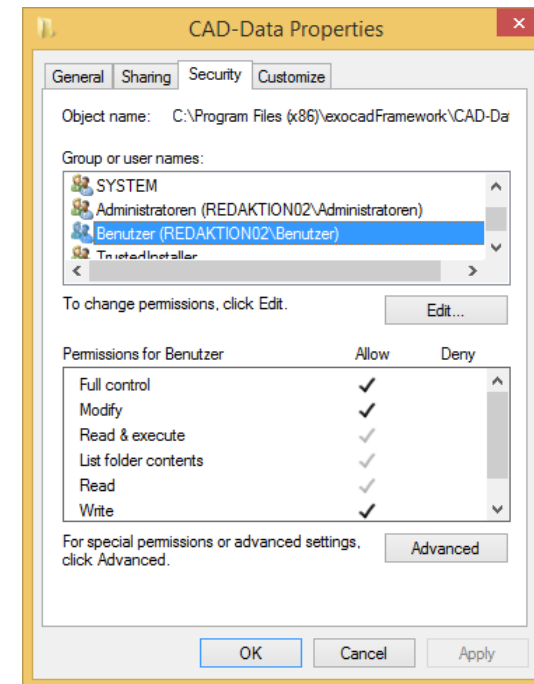
-Useful hint-

- If the user does not have the editing rights, the following error message will appear when starting the DentalDB application



Avoid error message:

- Ensure that the local user has full access authorization to the CAD-Data folder.
- To do this, select Properties in the context menu of the folder.
- Add the editing rights by marking the user in the upper list and click on Edit.



inLab



exocad

- Link inLab SW with exocad Dental DB

1

2

exocad

- Administration in exocad

exocad

- Press „Scan“ button in exocad

3

4

inLab

- Admin phase of inLab SW opens
- Continue to scan phase
- Start scan process with inEos X5

5

inLab

- If necessary Edit Model and Set Model Axis

6

7

inLab

- Export to exocad

8

exocad

- Scanned data transmitted

9

exocad

- Start design with exocad

Integration of inEos X5 in exocad workflow