



Atlantis®

## Accurate, convenient control

Atlantis® CustomBase solution  
for screw-retained restorations



# Unique, premium quality solutions – your way

Something unique is happening with screw-retained solutions. Innovations are changing the landscape. For the first time, a patient-specific screw-retained solution has been developed.

The Atlantis CustomBase solution features an Atlantis Abutment and Atlantis Crown with a customized emergence profile, available in titanium or gold-shaded titanium and compatible with your choice of implant systems<sup>1</sup>.

Are you ready to take control?

## **It is the first true patient-specific, two-piece screw-retained solution**

- Patient-specific (one size does not fit all)
- Customized emergence profile of both Atlantis Abutment and Atlantis Crown
- Flexibility of abutment material  
– titanium or gold-shaded titanium
- For all major systems<sup>1</sup>

“I know my patients want to be out of the chair as quickly as possible and with the best esthetic results. Atlantis offers a wide selection of solutions, which makes this a reality. I can receive an abutment that is designed to match the natural tooth, a solution that can be cemented intraorally or extraorally, and I can work with the implant system I am used to.”

Dr. Lars-Magnus Almgren, DDS  
Tandverket, Gothenburg, Sweden



# All together now – Atlantis<sup>®</sup> CustomBase solution for screw-retained restorations



Cut-back crown in zirconia or  
full-contour crown in zirconia with  
screw access hole.



Cut-back crown file or full-contour  
crown file with screw access hole.



Core File with  
screw access hole  
indicated.

## Atlantis<sup>®</sup> Crown, Cut-Back and Full-contour

The Atlantis Crown with a screw access hole can be ordered at the same time as the Atlantis Abutment. The crown is available in a cut-back version for porcelain veneering or as a full-contour version for staining and glazing the crown. With a fixed cement space of 40 µm, the crown is cemented extraorally to the Atlantis Abutment to avoid potential complications caused by excess cement. Available in 12 different translucent shades of zirconia and one white zirconia to resemble the shades on the Vita shade guide.

## Atlantis<sup>®</sup> Abutment

A uniquely designed, patient-specific abutment for single tooth, screw-retained restorations. Built-in anti-rotational features created by the patented Virtual Atlantis Design (VAD) software and a retentive abutment surface. Available in biocompatible materials, including titanium and gold-shaded titanium.

## Atlantis<sup>®</sup> Crown File

The Atlantis Crown File is a patient-specific, “ready-to-mill” digital file of the cut-back or the full-contour crown design. Designed in the patented Virtual Atlantis Design (VAD) software, the crown file is downloaded to the customer’s software, and the crown is milled in the dental laboratory.

## Atlantis<sup>®</sup> Core File

The Atlantis Core File with a screw access hole indicated can be ordered together with the Atlantis Abutment for crown production in the dental laboratory. Atlantis Core File (a digital file of the total case, including the outer surface of the Atlantis Abutment) is easy to import in the design software.

# Outstanding flexibility in your workflow

- No investment in or maintenance of additional equipment and software
- A choice of using your own crown design and crown milling capacity by utilizing Atlantis Core File or Atlantis Crown File
- Free up skilled dental technician's time for other tasks
- A business model that is less vulnerable in peak seasons



## Workflow - Atlantis® CustomBase solution with an Atlantis® Crown in zirconia



### Atlantis® WebOrder

Easily order your Atlantis CustomBase solution. Built-in features allow you to adjust porcelain cut-back values and abutment parameters.



### Virtual Atlantis® Design (VAD)

Patented design software allows you to take the edentulous space, surrounding teeth and soft tissue anatomy into consideration. The abutment and crown are designed to match the anatomical tooth shape.



### Atlantis® Editor

Unique, advanced software enables you to modify the Atlantis Abutment and Atlantis Crown well in advance of the milling process.



### Atlantis® solution

The Atlantis CustomBase solution, consisting of an Atlantis Crown, an Atlantis Abutment and an Atlantis Abutment screw, is delivered to the dental laboratory.



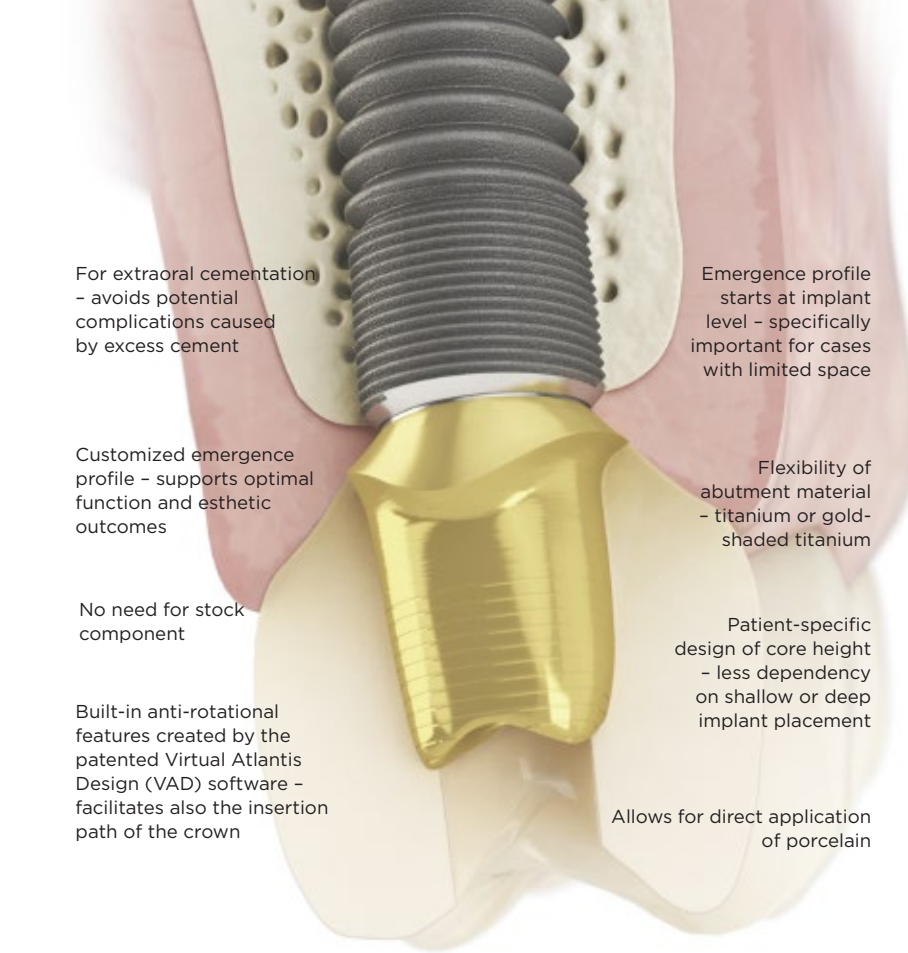
### Cementation

The crown with a screw access hole is cemented to the abutment extraorally. The Atlantis Crown has a fixed cement space of 40 µm.



### Installation

After cementation, the Atlantis CustomBase solution is ready for installation in the patient's mouth.



For extraoral cementation  
- avoids potential complications caused by excess cement

Emergence profile starts at implant level - specifically important for cases with limited space

Customized emergence profile - supports optimal function and esthetic outcomes

Flexibility of abutment material - titanium or gold-shaded titanium

No need for stock component

Patient-specific design of core height - less dependency on shallow or deep implant placement

Built-in anti-rotational features created by the patented Virtual Atlantis Design (VAD) software - facilitates also the insertion path of the crown

Allows for direct application of porcelain

## Your preferred implant system

Atlantis abutments are compatible with an extensive range of implant connections, giving you the opportunity to work with your preferred implant system<sup>1</sup>.



## We've got you covered

By choosing Atlantis, you can be assured that the prosthetic solutions you receive are of the highest quality, safety and reliability. This is why Atlantis patient-specific prosthetic solutions come with an exclusive and industry-leading comprehensive warranty program. If an implant supplier does not honor its warranty due to your use of Atlantis abutments, Dentsply Sirona will cover the abutment, the crown and the implant<sup>2</sup>.

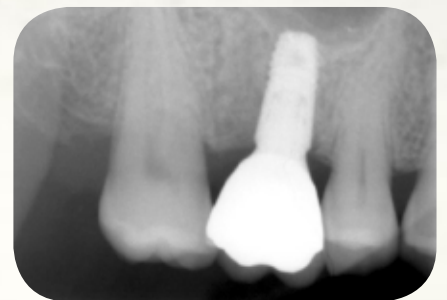


1. Refer to the Atlantis abutments implant compatibility chart.
  2. Subject to the terms and conditions of the Atlantis abutments warranty.
- All trademarks, company names and implant designs are the property of their respective owners.



"There was no doubt in my mind that the best restorative option was an implant. I look and feel a whole lot better - if I do say so myself!"

Christina G



Radiograph of final restoration. Astra Tech Implant System EV with an Atlantis CustomBase solution designed with an Atlantis Crown, Full-contour.

### About Dentsply Sirona Implants

Dentsply Sirona Implants offers comprehensive solutions for all phases of implant therapy, including Ankylos®, Astra Tech Implant System® and Xive® implant lines, digital technologies, such as Atlantis® patient-specific solutions and Simplant® guided surgery, Symbios® regenerative solutions, and professional and business development programs, such as STEPPS™. Dentsply Sirona Implants creates value for dental professionals and allows for predictable and lasting implant treatment outcomes, resulting in enhanced quality of life for patients.

### About Dentsply Sirona

Dentsply Sirona is the world's largest manufacturer of professional dental products and technologies, with a 130-year history of innovation and service to the dental industry and patients worldwide. Dentsply Sirona develops, manufactures, and markets a comprehensive solutions offering including dental and oral health products as well as other consumable medical devices under a strong portfolio of world class brands. As The Dental Solutions Company™, Dentsply Sirona's products provide innovative, high-quality and effective solutions to advance patient care and deliver better, safer and faster dentistry. Dentsply Sirona's global headquarters is located in York, Pennsylvania, and the international headquarters is based in Salzburg, Austria. The company's shares are listed in the United States on NASDAQ under the symbol XRAY.

Visit [www.dentsplysirona.com](http://www.dentsplysirona.com) for more information about Dentsply Sirona and its products.