



Transition zone

**Atlantis® solutions**  
FOR YOUR CHOICE OF  
IMPLANT SYSTEMS

Atlantis®

# The difference defined

Patient-specific solutions



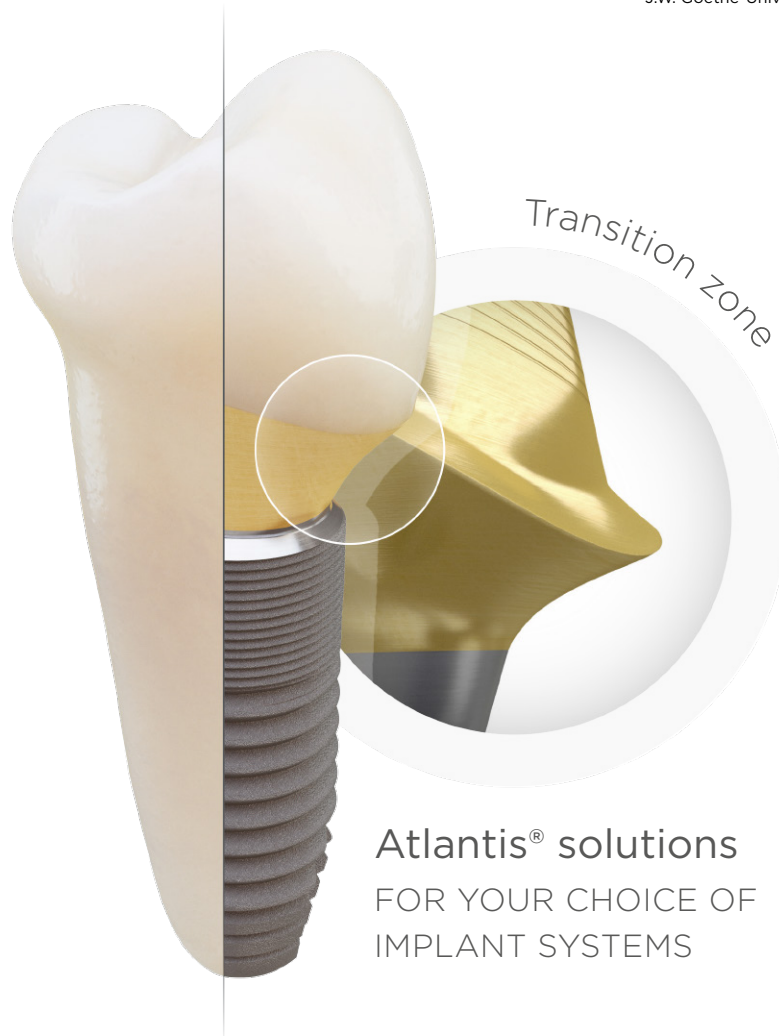
# A personal approach

A look, a smile, a feeling inside. Identity is defined in a myriad of ways. With Atlantis solutions, individualism is integrated into every last detail. A combination of strength, simplicity and unique design options replicate the natural tooth shape, giving you the opportunity to return your patient's individuality.



“In a world of increasing connectivity, it’s easy to get lost in the crowd. Individuality requires something special, something that resonates with our natural identity.”

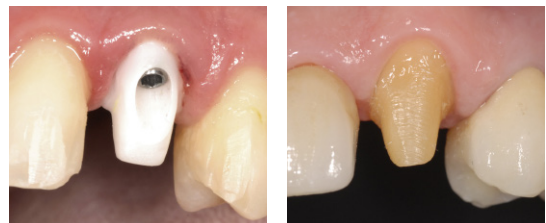
Dr. Paul Weigl,  
Head of Department of Postgraduate Education at  
J.W. Goethe-University, Frankfurt am Main, Germany



Atlantis® solutions  
FOR YOUR CHOICE OF  
IMPLANT SYSTEMS

## Just like natural prepped teeth

Implant prosthetics restored with Atlantis patient-specific solutions truly mimic natural tooth function and appearance, just like natural prepped teeth. Supported by a digital workflow that makes it easier for all members of the treatment team to connect, you can restore your implant restorations with a simple and time-effective restorative procedure.



Arnold Rosen, DDS, MBA  
Private practice, Boston, Massachusetts, USA

# Your choice – from start to finish

## Atlantis® patient-specific solutions

Prioritize patient individuality with Atlantis patient-specific solutions. Utilize the advanced connectivity of Atlantis solutions, from impression taking to the delivery of the final restoration, to provide an implant solution designed on a patient's natural tooth shape.

Match your choice of implant systems with a genuine, fully integrated solution, developed to reduce chair time and recognize the uniqueness of each patient.

## Streamlined workflow for implant solutions



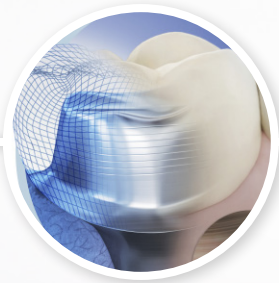
### 1. Impression

Choose between conventional or digital implant-level impressions.



### 2. Easy to prescribe

The case material is sent to the preferred dental laboratory with a prescription for the selected Atlantis solution.



### 3. Virtual Atlantis Design (VAD)

The order is finalized by the dental technician and sent to Dentsply Sirona for design and production. The treatment team can easily monitor, view and approve design before production.



### 4. Final patient-specific solution

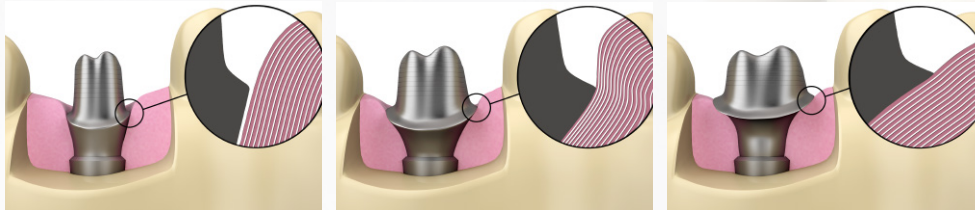
Once produced, the Atlantis patient-specific solution is returned to the dental technician, who then finalizes the restoration and sends it to the restorative clinician.



Atlantis solutions are prescribed, reviewed and monitored in collaboration with your preferred dental laboratory.

## Defined by design

Virtual Atlantis Design (VAD) proprietary design software, allows you to take the edentulous space, surrounding teeth and soft tissue anatomy into consideration. This enables you to design patient-specific solutions that replicate natural tooth function and esthetics.



No tissue displacement

Contour tissue

Anatomical support

When working with genuine Atlantis solutions, you have the restorative freedom to choose among different emergence width options and define the position of the restorative margin, to help you achieve optimal function and esthetic outcomes.



Cement-retained solution for intraoral cementation



Screw-retained solutions for extraoral cementation



## Freedom to choose

Atlantis patient-specific solutions are indicated for all positions in the mouth, and are available for single tooth cement- and screw-retained solutions. Abutments and crowns come in biocompatible materials including titanium, gold-shaded titanium and different shades of zircona, meeting patient requirements and preferences for function and esthetics.

## Restorative flexibility

With Atlantis solutions, you get an open digital workflow that provides the greatest flexibility for your restorative implant needs. You can easily integrate Atlantis solutions into the way you prefer to work, facilitating team communication and increasing business profitability. Atlantis solutions are compatible with an extensive range of implant connections, which allow you to work with your preferred implant system<sup>1</sup>.

1. Atlantis abutments implant compatibility chart. All trademarks, company names and implant designs are the property of their respective owners.



“In a world where patient expectations are high, Atlantis solutions offer the highest level of versatility and precision, allowing me to consistently deliver the best clinical results.”

Dr. Tim Doswell, BChD Dip.Imp.Dent.RCS(Eng)(Adv.Cert),  
Raglan suite, Harrogate, United Kingdom

TITANIUM



LIFETIME

GOLD-SHADED  
TITANIUM



LIFETIME

ZIRCONIA



5-YEAR

## We have you covered

Atlantis solutions are backed by a comprehensive warranty. If an implant supplier does not honor its warranty due to your use of Atlantis abutments, Dentsply Sirona will cover both the abutment, the crown and the implant.<sup>2</sup>



Based on the implant position, emergence profile and the restorative clinician's preference of emergence width options, the patient-specific abutment is produced by Dentsply Sirona and viewed and edited by the dental technician. The subgingival portion of the abutment is designed with an anatomical shape which supports the surrounding soft tissue.

After six years, a radiograph shows the precise fit of the restoration, were the inter-proximal papillae are kept stable, and the position of the bone is at the level of the implant. The soft tissue around the restoration, filling the inter-proximal space contributes to a natural soft tissue contour.

Courtesy of Fernando Rojas-Vizcaya, DDS, MS and Francisco Ortega, CDT

### Ongoing innovation and documentation

Built upon a solid foundation of research and development, Atlantis solutions are backed up by long-term experience and documentation, delivering simplicity,

freedom, esthetics, and reliability for your implant restorations. The commitment to quality is further supported by an extensive pre-clinical and clinical studies program.

2. Subject to the terms and conditions of the Atlantis abutments warranty.



“After my tooth broke off, I did not want to live with a gap or grind down any teeth for a bridge. So an implant was my best choice. Now I have a new tooth that looks and feels just like the original one did.”

Jay E

## Solutions patients can rely on

Atlantis solutions are developed to meet patient requirements, by utilizing state-of-the-art technology to mimic natural tooth function and esthetics.



Radiograph of final restoration. Astra Tech Implant System EV with an Atlantis Abutment in gold-shaded titanium and a finalized crown using an Atlantis Crown, Cut-back.

## About Dentsply Sirona Implants

Dentsply Sirona Implants offers comprehensive solutions for all phases of implant therapy, including Ankylos®, Astra Tech Implant System® and Xive® implant lines, digital technologies, such as Atlantis® patient-specific solutions and Simplant® guided surgery, Symbios® regenerative solutions, and professional and business development programs, such as STEPPS™. Dentsply Sirona Implants creates value for dental professionals and allows for predictable and lasting implant treatment outcomes, resulting in enhanced quality of life for patients.

## About Dentsply Sirona

Dentsply Sirona is the world's largest manufacturer of professional dental products and technologies, with a 130-year history of innovation and service to the dental industry and patients worldwide. Dentsply Sirona develops, manufactures, and markets a comprehensive solutions offering including dental and oral health products as well as other consumable medical devices under a strong portfolio of world class brands. As The Dental Solutions Company™, Dentsply Sirona's products provide innovative, high-quality and effective solutions to advance patient care and deliver better, safer and faster dentistry. Dentsply Sirona's global headquarters is located in York, Pennsylvania, and the international headquarters is based in Salzburg, Austria. The company's shares are listed in the United States on NASDAQ under the symbol XRAY.

Visit [www.dentsplysirona.com](http://www.dentsplysirona.com) for more information about Dentsply Sirona and its products.