



Reliable data security

Duplicate copies of all your cases prevent data loss

Workflow choices for multiple workstations

Keep your practice efficient with fully synchronized data

True plug and play

Simply connect and let Hub auto-configure

Futureproof your investment

Free updates and new features for the lifetime of the product

Safety first

Vault* remote backup offers disaster-proof data security

* subject to additional fees

THE DENTAL SOLUTIONS COMPANY™



It just works.

Dentsply Sirona Hub - Streamlined workflows and complete data security for your practice technology.

www.dentsplysirona.com/hub



Procedural Solutions

- Preventive
- Restorative
- Orthodontics
- Endodontics
- Implants
- Prosthetics

Enabling Technologies

- CAD/CAM
- Imaging
- Treatment Centers
- Instruments

Dentsply Sirona

Sirona Dental Systems GmbH
Fabrikstraße 31, 64625 Bensheim, Germany
dentsplysirona.com

THE DENTAL SOLUTIONS COMPANY™



Subject to technical changes and errors in the text. Order No. A9100-M43-C259-7600. Printed in Germany. Dispo No. 04601, OEWT20.V1

Minimal footprint. Maximum impact.

Keep all patient and CAD/CAM data synchronized everywhere in the practice. See the current status for all restorative cases in progress at a glance on all devices. Enjoy the serenity of knowing data is not vulnerable to cyber-attacks. Just three of Hub's many advantages.

The Dentsply Sirona data transfer and data backup solution is a catalyst for streamlined workflows, bringing a new level of comfort to everyday practice life. Complicated data transfers are a thing of the past. Hub automatically links to other Dentsply Sirona devices and workplaces on the network and makes CAD/CAM data available everywhere. Data transfer is always heavily encrypted.

Scan now, design on another device. No need to keep a manual record. Hub keeps track of cases in progress with practical action item lists.

Never worry about hard disk failure or system failure again. Thanks to duplicate backup copies, your data is always available with Hub.



EASY TO USE	STREAMLINED WORKFLOW	INTELLIGENT DATA TRANSFER
CONSISTENT DATA THROUGHOUT THE PRACTICE	PROTECTION AGAINST DATA LOSS	FUTURE UPDATES ARE INCLUDED

Versatile device, multiple advantages.

It just works!

Auto-configuration: No technician required, no tedious setup. Just connect Hub to your network and it configures itself.

True plug-and-play: As soon as Hub is powered on in the network, it is instantly visible to all compatible devices. A single click at each workstation to be connected is all it takes to finalize the link to Hub.

Integrated workflows: Would you like your practice management software to connect to Hub? No problem. Hub is equipped with a documented interface that allows other software products to connect and coordinate data and cases. This will allow control of your restorative cases directly from within the patient files.

Safer than ever

More really is more: When it comes to case storage, duplicate copies provide protection against data loss.

Encryption: Hub data storage and transmission are encrypted so securely that even our technicians cannot access your data from outside your office. Hub has no vulnerabilities to make it susceptible to theft or misuse, ensuring that your patients' personal privacy remains protected.

Remote backup: Backup in the practice is great, but what happens in case of flood or fire? Vault offers remote backup service for everything on your Hub which complies with international and domestic standards for medical data - it doesn't get any safer than this!

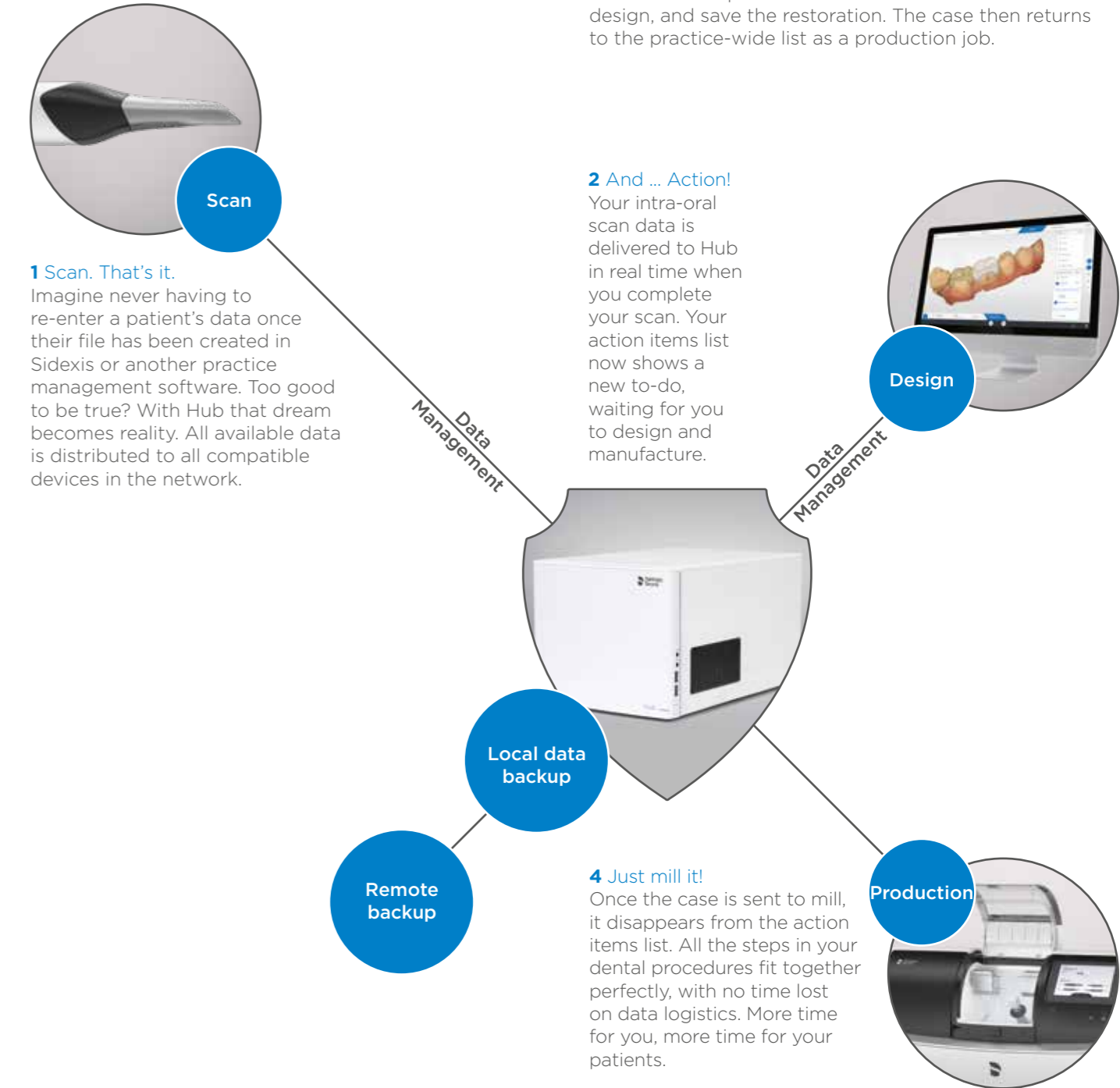
Work more efficiently

Enhanced data flow: Hub keeps data available across all devices so there is no need to recreate patient data or transfer cases from one device to another. Hub also saves and coordinates job status data, keeping your staff free to complete orders at their leisure without the need for reminders.

Hub automatically recognizes CEREC, CEREC Ortho, the Connect Software and Sidexis on the network with appropriate software versions. Additional systems will be added to expand integration options.

Updates included: Your purchase ensures that you will benefit from all the new features released for Hub in the future. After all, the objective is to simplify and improve workplace efficiency, and to secure your data at all times.

Find more information at www.dentsplysirona.com/hub



1 Scan. That's it. Imagine never having to re-enter a patient's data once their file has been created in Sidexis or another practice management software. Too good to be true? With Hub that dream becomes reality. All available data is distributed to all compatible devices in the network.

2 And ... Action! Your intra-oral scan data is delivered to Hub in real time when you complete your scan. Your action items list now shows a new to-do, waiting for you to design and manufacture.

4 Just mill it! Once the case is sent to mill, it disappears from the action items list. All the steps in your dental procedures fit together perfectly, with no time lost on data logistics. More time for you, more time for your patients.

3 Hand in glove with your practice lab. And it gets even better: Once the scan is done, your in-office dental technician can pick a case from the action items list to design, and save the restoration. The case then returns to the practice-wide list as a production job.

Hub: An investment in the future of your practice

Hub is not only an external storage device, but rather a digital assistant that thinks for itself and looks ahead. It streamlines everyday workflows in your practice in small but crucial ways while protecting your data against theft and loss. Dentsply Sirona will continue to develop Hub in the future, advancing it step by step, so complex work processes become even easier for you by means of Hub software updates. Ask your dealer for more detailed information about Hub today.