



Intraoral Family of Products

Want to see what  
we see?

---

THE DENTAL  
SOLUTIONS  
COMPANY™

 Dentsply  
Sirona





# Advanced Technology For Better Care

Dentsply Sirona's intraoral products are designed to provide you with solutions to help you make advances in digital dentistry by transforming your daily work and patient interactions. Whether you are using state-of-the-art intraoral imaging systems or advanced laser treatment devices, Dentsply Sirona's innovative technologies can enhance every part of your practice.

## IMAGE QUALITY

Thanks to immediate image results, you can provide greater diagnostics, clearer patient communication and the best clinical outcome for a more satisfied customer.

## MODULARITY

Benefit from high-tech tools designed to fit your personal preferences that improve clinical workflow, make patient time more productive and create a more enjoyable, rewarding experience.

## DURABILITY

Every intraoral imaging product is built to last and is supported by local tech support, in-office training.



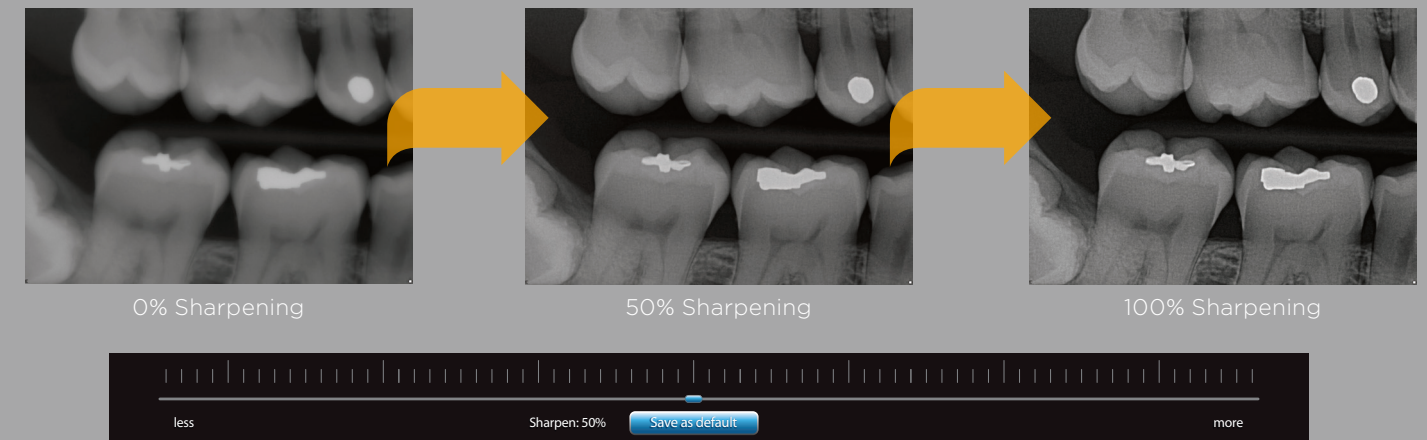
# Schick 33

Get unprecedented image quality and control from Schick 33, the next generation in intraoral digital radiography.



## Dynamic Image Enhancement

Maximize Schick 33's true diagnostic potential with image management control capabilities. Dynamically enhance images, manipulate sharpness and use clinical-specific views to see images that best suit your individual needs.



### 3 Sensor Sizes

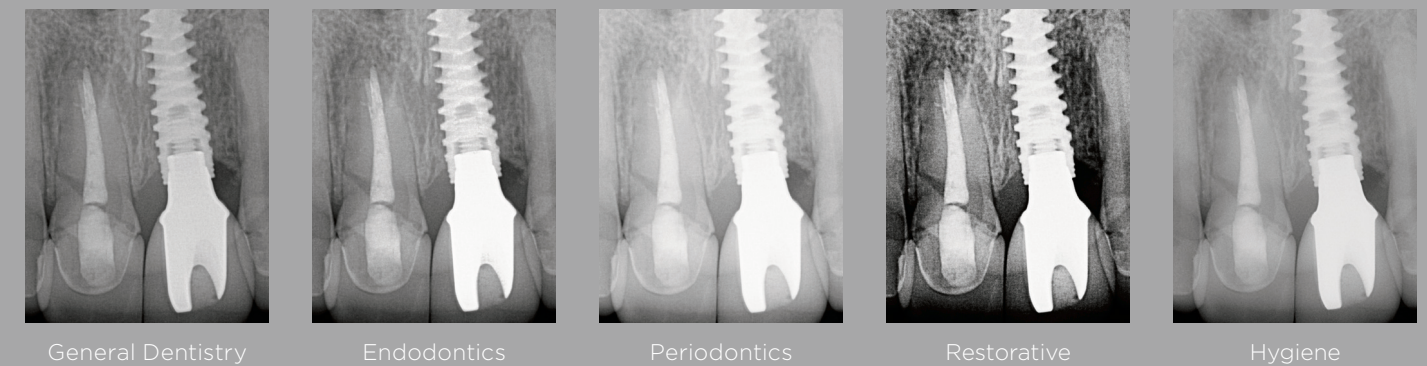
Accommodate a full range of patients, including children. Schick 33 is available in all three sizes (0, 1 and 2).

### High-Resolution Imaging

The Schick 33 intraoral sensor provides a theoretical resolution of 33 line pairs per millimeter for consistently detailed images and advanced diagnostic capabilities.

### Interchangeable Cable Technology

All sensors use replaceable cable technology. Available in 3 ft., 6 ft. and 9 ft. to fit your unique operatory needs.



Schick 33 provides exceptionally clear images, which makes the diagnostic process more efficient and accurate.



# Heliodent Plus

Heliodent Plus is the latest generation of intraoral X-ray generator for digital and film-based imaging. The Heliodent Plus features quick and safe operation that enhances your practice workflow.



## Available Installation Options

### Remote Timer

Separates the imaging controls from the unit.

### Remote Control

Separates the exposure button from the unit.

### Exposure Release Button

10' coiled cord exposure button.

## Optimized For Digital Imaging

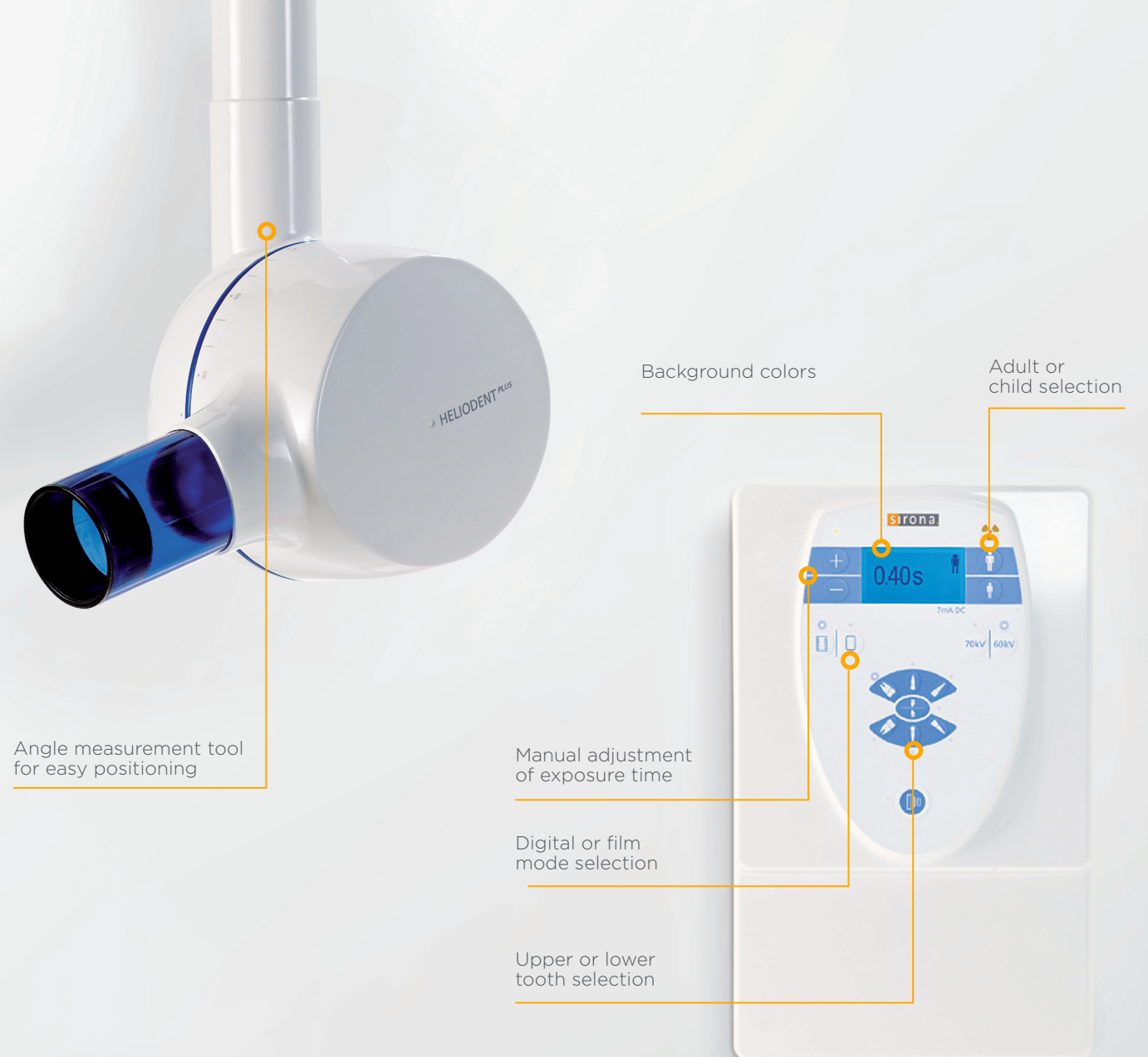
Small focal spot generator with preprogrammed digital sensor settings.

## Ease of Use

User-friendly interface with preprogrammed settings for better workflow.

## Multiple Configurations

Three different arm lengths and remote control features allow for an installation in any operatory.



Angle measurement tool for easy positioning

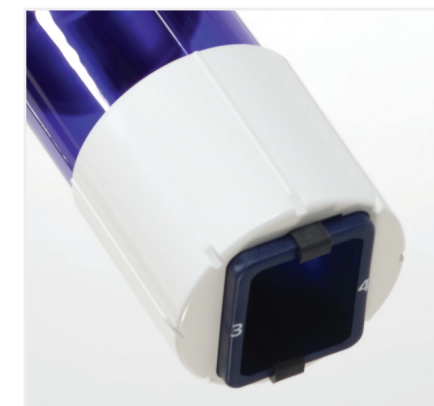
Background colors

Adult or child selection

Manual adjustment of exposure time

Digital or film mode selection

Upper or lower tooth selection



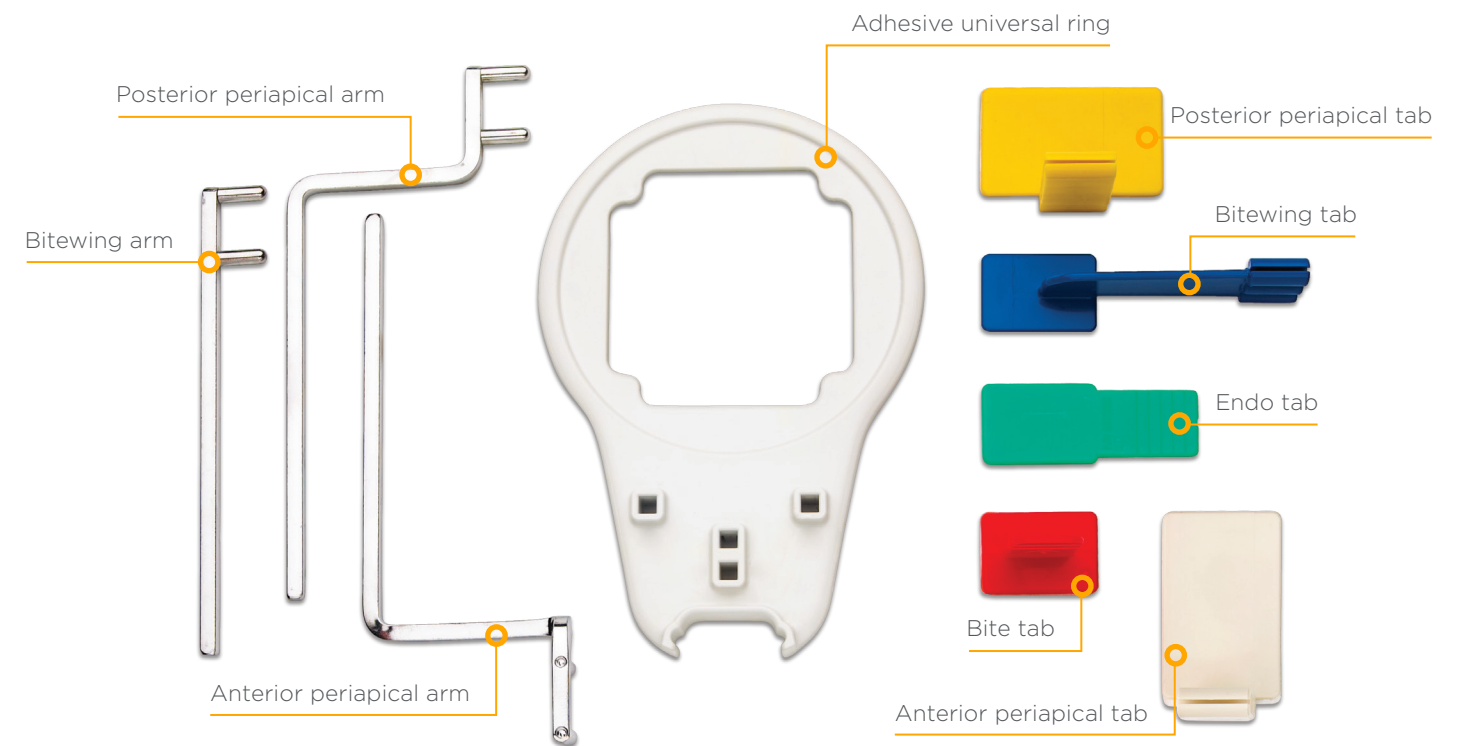
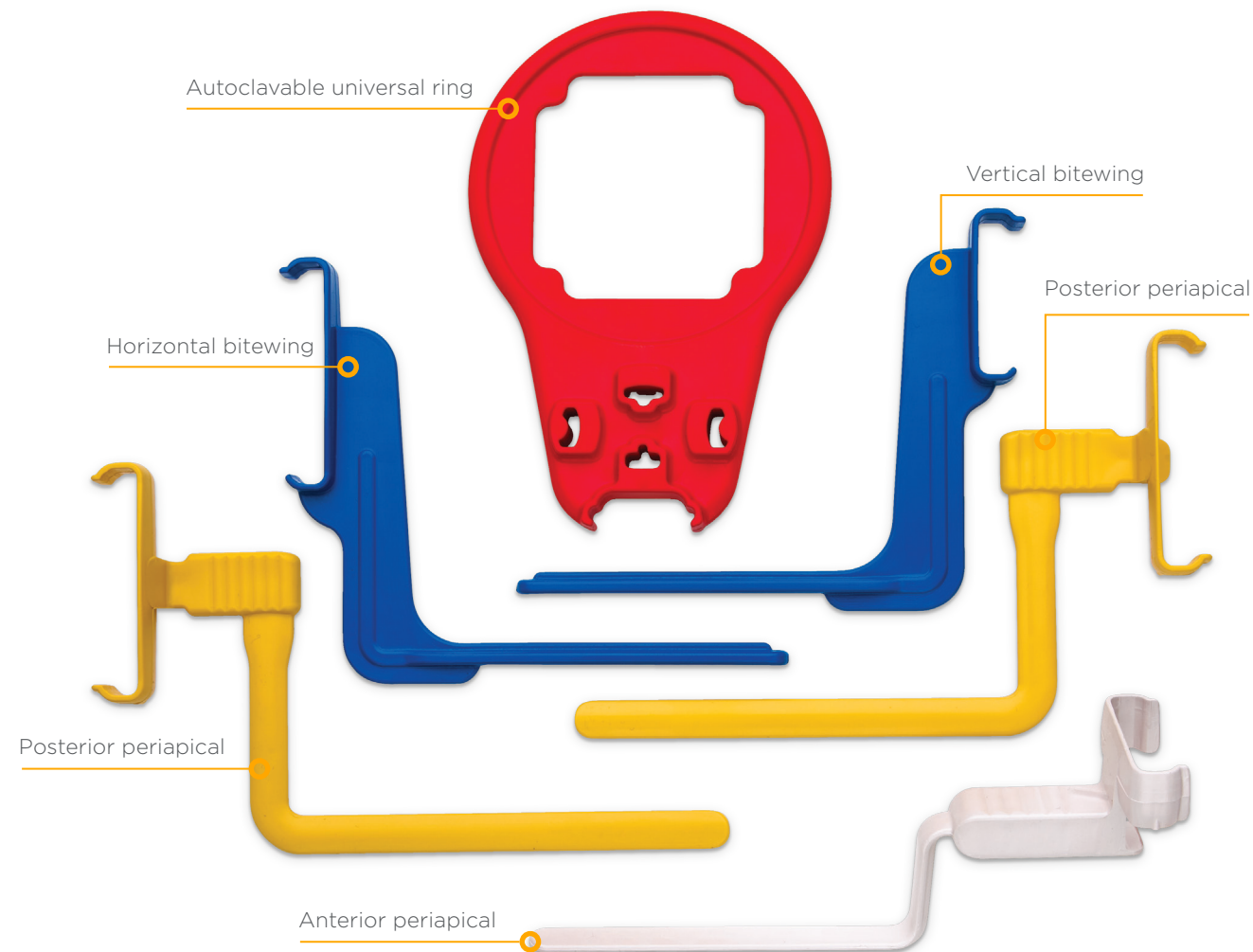
## Rectangular Collimator

Included accessory to reduce radiation to the patient



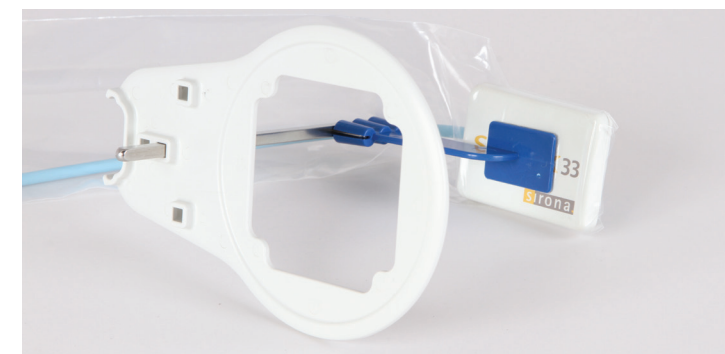
# AimRight Positioning Systems

Obtain properly oriented images easily and effectively with the system designed for optimal sensor placement and patient comfort.



## Grip Positioning System

Featuring a universal aiming ring, unique integrated arm and holder design, this system makes assembly and repeatable



## Adhesive Positioning System

Maximize comfort and convenience without adding to sensor dimensions. Used in multiple configurations, this disposable system is suitable for all patients regardless of oral cavity size or structure.



# Options to Fit Your Practice

## Robust Sensor Interface

Highly rated connector, greater than 20,000 insertion cycles, more durable than a standard USB connection.

## Intelligent Design

Remote firmware can be upgraded to address future advances in technology.

## Remote Installation

Sensor interface can be mounted up to 15 feet away from computer.



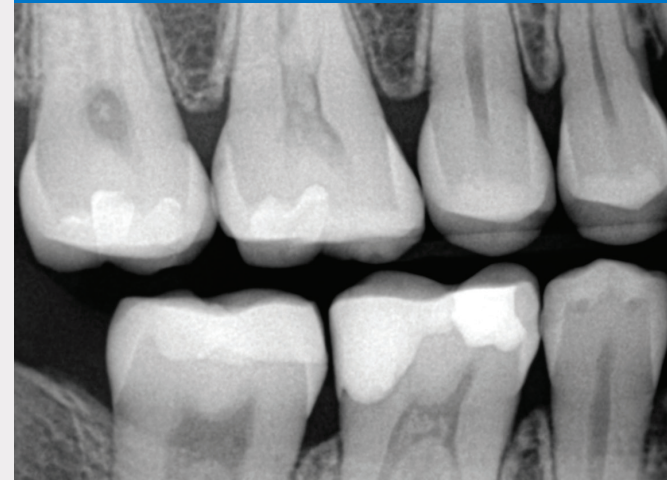
## 3 Sensor Sizes

Meet the needs of every patient.

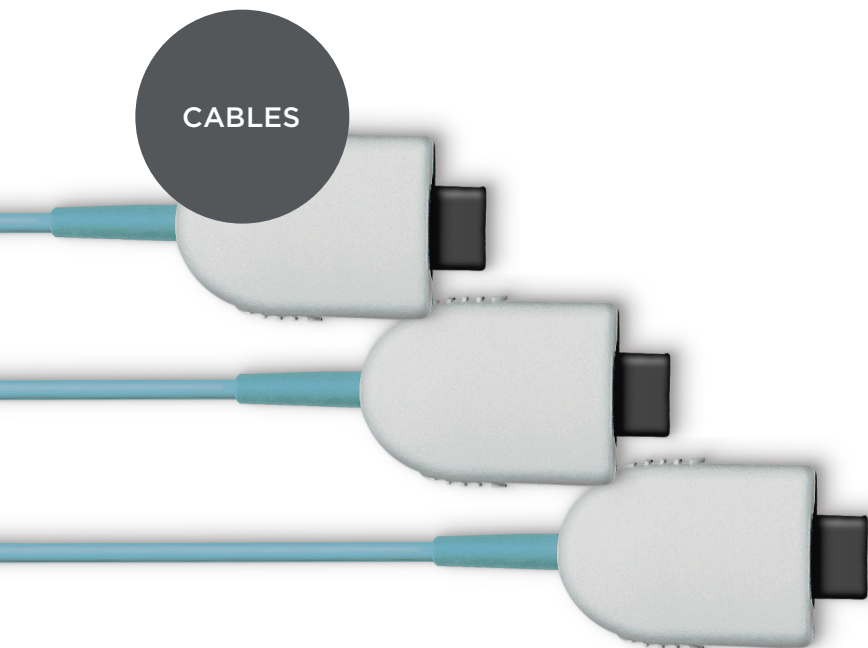
## Interchangeable Cable Technology

Choose from 3 ft., 6 ft. or 9 ft. lengths.

## Connectivity Options



## CABLES



## 3 Different Lengths

Choose from 3 ft., 6 ft. or 9 ft. to meet your individual needs.

## Kink Resistant

Kevlar reinforced, silicon-coated cable for increased durability.

## Interchangeable Cable Technology

## Room-to-Room Mobility

WiFi interface gives clinicians unobstructed chairside mobility.

## Works with Schick Elite Sensors

Compatible with all three sensor sizes.

## SCHICK WiFi

Integrates with Schick AimRight Positioning Systems





# USBCam4

## The perfect blend of portability and advanced imaging

Take digital diagnostics and patient education to the next level with this lightweight, compact intraoral camera. Featuring high-quality images and one-click image capture, it is an exceptional tool for improving patient understanding and compliance.

## Universal Fixed Focal Range

Capture crisp, clear images in extreme close-up and full arch.

## Lightweight and Ultra-Portable

Easily transfer between operatories without operator fatigue.

## Multiple Mounting Options

Flexible installation in any operatory.

## Easy Platform Integration

Use in conjunction with Schick 33 Elite and Elite sensors or as a standalone.



**8 high-quality LED lights**

Provide superb clarity and color.

**Standard USB Connection**

No capture card required.



## EFFICIENT

### 970nm

Ideal wavelength with highest absorption into water/soft tissue. Reduces collateral damage and burning flesh odor when used in combination with water.

## POWERFUL

### 14 watt

Highest peak-power soft tissue diode laser. The additional power gives you the freedom to perform procedures at your own pace, adjusted to your patients and the environment.

## USEFUL

### Applications

- **Frenectomy**  
Save time and get better results.
- **Gingivectomy**  
Added control gets you the results.
- **Implant Uncovers**  
Use the laser without compromising the site.
- **Sucular Debridement**  
Ideal for hygiene applications.
- **Gingival Troughing**  
Perfect companion for your CEREC.
- **Hemostasis**  
Stopping bleeding is easier in a wet environment.

# SIROLaser Advance



1. Ergonomic handle for portability and mobility.

2. Color touchscreen navigation with user profiles, presets and customized treatment settings.

3. Li-ion battery for untethered usage and transport.

4. Counterclockwise cable management winding solution for safe transport and storage.

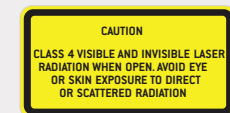
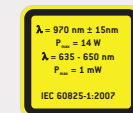
5. Fiber length adjustable on the fly.

6. Straightforward fiber management allowing effortless sterilization of sleeve, tips and fibers.

7. Ergonomic handling with integrated finger activation for true portability.

8. Bendable single-use tips that can be rotated to the optimal angle.

## Accessories





# Technical Data



Schick 33



Schick Elite

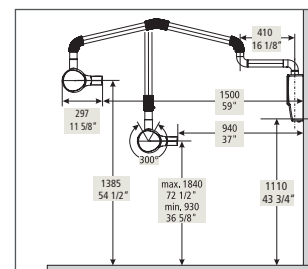
SENSORS	
Sensor 0: Pixel count	1.9 Megapixels
Sensor 0: Overall dimensions	23.6 x 32 x 7.5 mm
Sensor 1: Pixel count	2.7 Megapixels
Sensor 1: Overall dimensions	25.4 x 38.3 x 7.5 mm
Sensor 2: Pixel count	4.1 Megapixels
Sensor 2: Overall dimensions	31.2 x 43 x 7.5 mm
Physical pixel size	15 µm
Theoretical resolution	33.3 lp/mm
Sensor cable length	3', 6' and 9'
USB MODULE	
USB port of USB module	Version 2.0
Power supply	USB port

SENSORS	
Sensor 0: Pixel count	0.48 Megapixels
Sensor 0: Overall dimensions	23.5 x 32 x 6.3 mm
Sensor 1: Pixel count	0.68 Megapixels
Sensor 1: Overall dimensions	25.3 x 38.4 x 6.3 mm
Sensor 2: Pixel count	1.25 Megapixels
Sensor 2: Overall dimensions	31.2 x 43.9 x 6.3 mm
Physical pixel size	30 µm
Theoretical resolution	16.7 lp/mm
Sensor cable length	Up to max. 2.7 m
USB MODULE	
USB port of USB module	Version 2.0
Power supply	USB port
WiFi	
Technology	IEEE 802.11b/g
Charging station for WiFi	
Function	Storage device and charger with LED status display

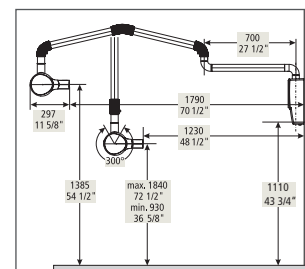


Heliodent Plus

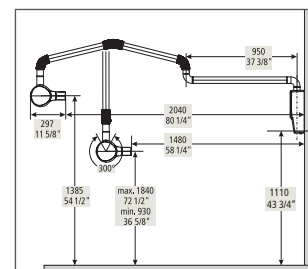
Generator type	High-frequency generator for constant high voltage
Tube voltage	Adjustable between 60 kV and 70 kV
Tube current	7 mA
Focal spot	0.4 (IEC 336)
Line voltage	120-240 V ± 10% without switching, 50/60 Hz
Exposure time	Incrementally adjustable from 0.01 to 3.2 s
Detector media	Preset for film, digital sensors, Phosphor plate system and other systems
Display	Multicolored display to show the different system states
Focus-to-skin distance	Standard 8", optional 12"



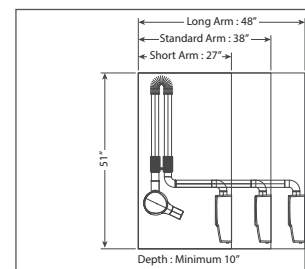
HELIODENT<sup>PLUS</sup> with short arm



HELIODENT<sup>PLUS</sup> with standard arm



HELIODENT<sup>PLUS</sup>



HELIODENT<sup>PLUS</sup>



AimRight Positioning System

GRIP SENSOR HOLDERS	QTY	SIZE/COLOR	PART#
AimRight Grip Starter Kit		Size 2	B1074230
AimRight Grip Starter Kit		Size 1	B1074130
REFILL PACKS			
AimRight Universal Ring	1	Red	B1074051
AimRight Horizontal Bitewing Autoclavable Holders S2	2	Blue	B1074251
AimRight Vertical Bitewing Autoclavable Holders S2	2	Blue	B1074252
AimRight Anterior Autoclavable Holders S2	2	White	B1074253
AimRight Periapical Autoclavable Holders S2	4	Yellow	B1074254
AimRight Horizontal Bitewing Autoclavable Holders S1	2	Blue	B1074151
AimRight Vertical Bitewing Autoclavable Holders S1	2	Blue	B1074152
AimRight Anterior Autoclavable Holders S1	2	White	B1074153
AimRight Periapical Autoclavable Holders S1	4	Yellow	B1074154
ADHESIVE SENSOR HOLDERS			
Adhesive Universal Starter Kit (includes 1 ring, 3 aiming arms, and 15 of each adhesive tab)	1		B1074330
REFILL PACKS			
Adhesive Positioning System Ring	1	White	B1073110
Adhesive BiteTab Holders	50/pkg	Red	B1073051
Adhesive Bitewing Holders	50/pkg	Blue	B1073052
Adhesive Endodontic Holders	50/pkg	Green	B1073053
Adhesive Anterior Holders	50/pkg	White	B1073054
Adhesive Periapical Holders	50/pkg	Yellow	B1073055
AimRight Endodontic Holder System	20/pkg	Beige	B1073056



SIROLaser

TECHNICAL DATA	SIROLaser ADVANCE	SIROLaser XTEND
Wavelength	970 +/- 15 nm	970 +/- 15 nm
Operation modes	Continuous Wave, Chopped Mode, Peak-Pulse Mode	Continuous Wave, Chopped Mode, Peak-Pulse Mode
Power	7 W	5 W*
Peak pulse	-14 W	-10 W*
Frequency	1-10,000 Hz	1-1,000 Hz*
Duty cycle	Variable	50% (fixed)*
Weight	-2.87 lbs (includes handpiece and battery)	-2.87 lbs (includes handpiece and battery)
DIMENSIONS	-7.75" x 7.17" x 7.44"	-7.75" x 7.17" x 7.44"
8 CE Hands-On training	Included, register at <a href="http://www.SIROLaser.com">www.SIROLaser.com</a>	Available, register at <a href="http://www.SIROLaser.com">www.SIROLaser.com</a>



USBCam4

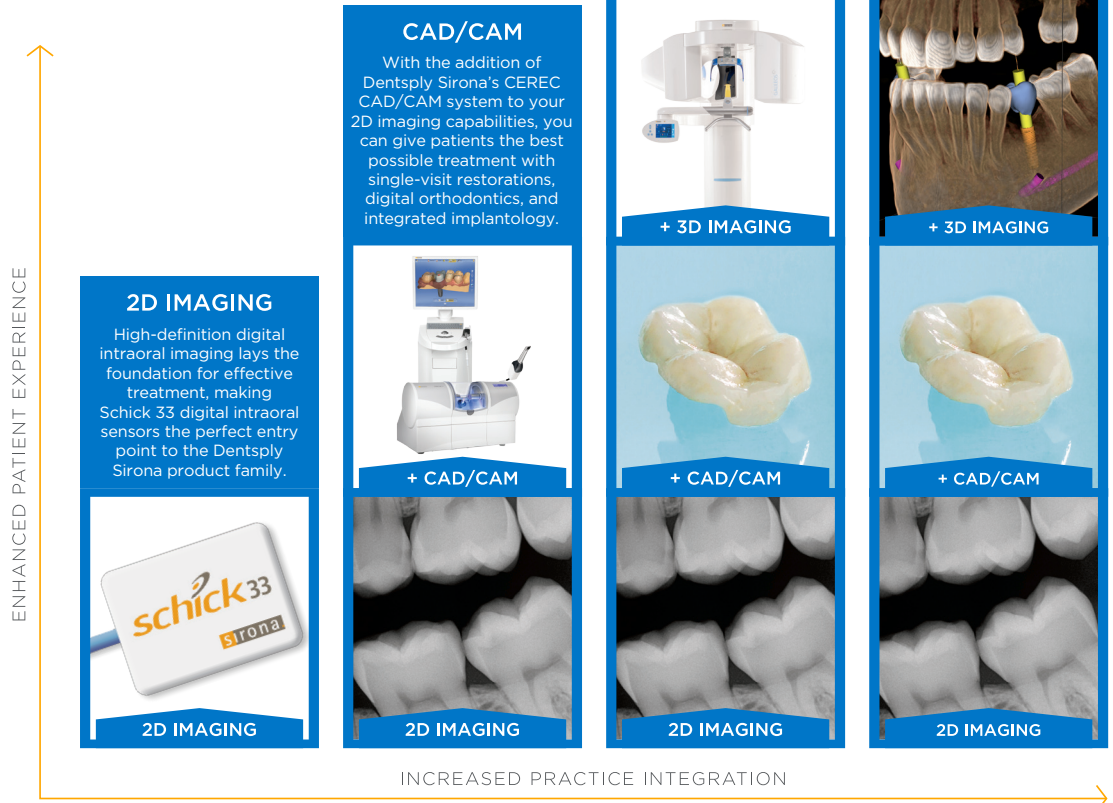
Imager	CCD
Video output	High-speed USB 2.0
Focus range	5-45 mm
Focus type	Fixed
Cable length	5 m
Resolution	640 x 480
Weight	45 g



# Dentsply Sirona Digital Integration

Our practice integration equips you with a team of digital components that work together to help you more thoroughly assess a patient's needs and deliver better patient care. Our suite of products is designed to grow with you and your practice.

While our digital integration enhances your patient's experience, it also enhances yours.



## Dentsply Sirona: The Dental Solutions Company

Dentsply Sirona, the technology and innovation leader in dentistry, has served dentists worldwide for more than 135 years. Dentsply Sirona develops, manufactures and markets a complete line of dental products, including CAD/CAM restoration systems [CEREC], CBTC imaging systems [GALILEOS], extraoral imaging systems, digital intraoral imaging technology [SCHICK], dental treatment centers and hand instruments. For more information about Dentsply Sirona and its products.