

## Orthophos SL with **3D I-X**

# The ideal 3D system for your practice—now with **3D I-X** mode



### Highest degree of safety

CBCT images at the same dose range as 2D X-ray images are now possible with the **3D I-X** mode. This gives you access to 3D information for specific diagnostic tasks at the highest degree of safety with the lowest dose level.

### Flexibility for any indication

Your practice will be even more flexible, because you can decide what is best for each clinical case: whether to use your Orthophos SL to obtain high-resolution, focused (HD) high definition images up to 80  $\mu\text{m}$ , balanced images for general questions (SD) standard dose, or **3D I-X** low dose imaging for minimum radiation doses.

### As versatile as practice life

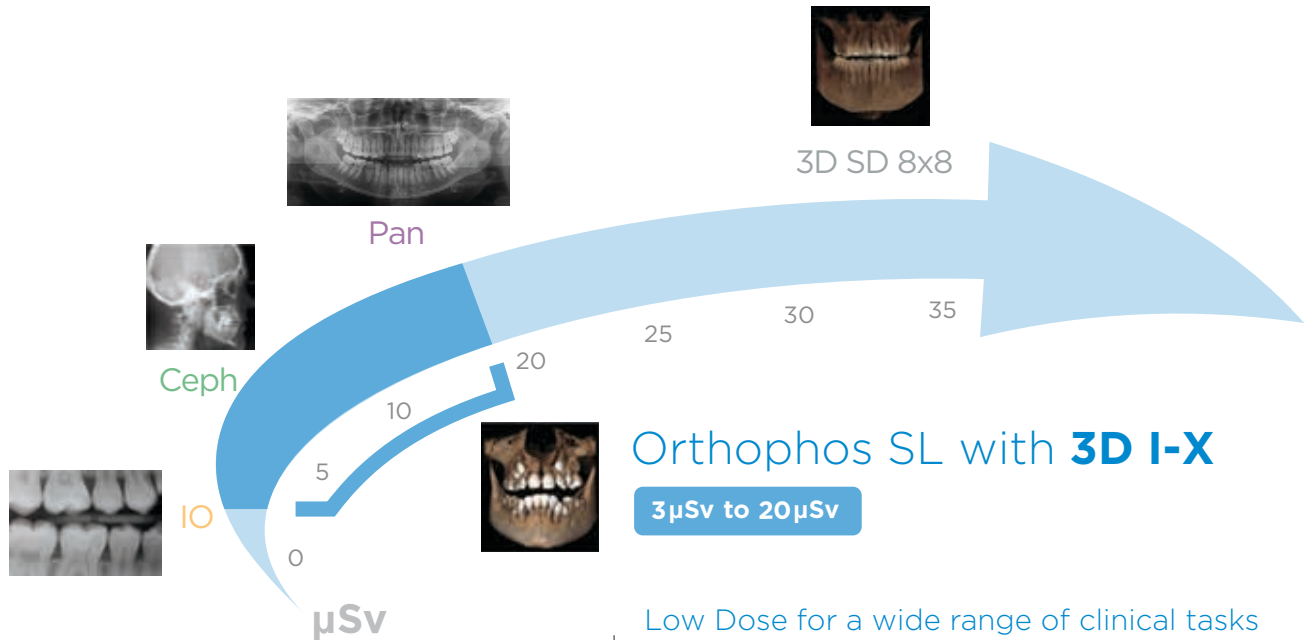
Intelligent filtering preserves the dense structures such as bones, so it can be used easily and efficiently in many clinical cases, for example, orthodontics or implantology.

“With the new **3D I-X** mode, I can now optimally check the success of a procedure postoperatively and in 3D without exposing the patient to unnecessary radiation levels.”

Dr. med. dent. Gerd Frahsek, Velbert

# Orthophos SL with **3D I-X**

Minimum dose for maximum safety for your patients.



## **3D I-X** for diagnostic optimization

**Indication** based on the lowest dose

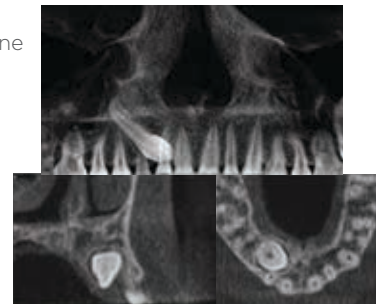
**Intuitive** selection for an efficient workflow

**Intelligent** technical realization for optimal results

### Low Dose for a wide range of clinical tasks

- Locating displaced canine teeth
- Determining the position of teeth and reviewing courses of treatment in orthodontics
- Postoperative 3D check in implantology and surgery
- Analysis of the airways and paranasal sinuses

Locating displaced canine teeth 5 cm x 5.5 cm at 3 µSv



Determining the position of teeth 8 cm x 8 cm at 8 µSv

