



Continuing Education Courses

2017 Schedule

Laboratory Courses and Workshops



Academy



Academy

Providing the knowledge,
skills, inspiration and
certification dental
professionals need to
stay up-to-date and
develop themselves and
their practices

Dentsply Sirona Prosthetics Education Programs

Laboratory Education and Technical Services Staff	3
Introduction	4

York, Pennsylvania Courses:

Introduction to Basic Removable Procedures Course (3 days)	5
Removable Partial Dentures Made Easy (2 days)	6
Expanded Complete Denture Workshop (2 days)	7
Flexible Options for Removables Using FRS®/Thermoflex™ (2 days)	8
Lucitone® HIPA High Impact Pourable Acrylic Denture Base (1 day)	9

Burlington, New Jersey Courses:

The Next Generation Provisional System - Radica® (1 day)	10
The Ceramco® iC Integrated Solution (2 days)	11
Fundamentals of Dental Ceramics (2 days)	12
Creative Ceramics (2 days)	13
Ceramco ALL-Ceramic Systems (1 day)	14
Celtra Press the New Generation of High Strength Glass Ceramics (2 days)	15

All courses described in this brochure are approved
by the following organizations:
C.D.T. Recertification Credit



Accepted National Sponsor
FAGD/MAGD Credit



Credit hours for each course are listed with the course description.

For information on any of the courses described in this brochure call:

Toni Testa @ 1-800-243-1942 ext. 56040
(9:00 a.m. to 6:00 p.m. E.S.T.)
or visit <https://www.dentsply.com/en-us/education/overview.html>

CANCELLATION POLICY

Dentsply Sirona reserves the right to cancel any class and is not responsible for any expenses incurred by the student due to cancellation. You may cancel up to two weeks prior to the program and receive a full refund. If you cancel less than two weeks before the program, you will be liable for 50% of the enrollment fee. Substitutes will be accepted at any time.

Dentsply Sirona Prosthetics

Laboratory Education and Technical Services Staff



Casey Miller, CDT, TE
Senior Education Manager
Clinical Affairs



Nelson Ochoa, CDT, TE
Technical Manager
Technical Services



Anne Aurio, CDT
Technical Specialist
Technical Services



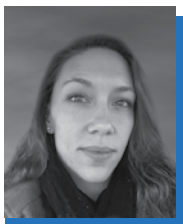
Terrence Hill, CDT
Technical Specialist
Technical Services



Kristi Neff, CDT
Technical Specialist
Technical Services



Sue DeNero-Florio
Technical Communications
Technical Services



Pam Rainey
Dental Technician 1
Technical Services



Doug Brydels, CDT
Education Specialist
Clinical Affairs



Kathy Catanzaro, CDT
Education Specialist
Clinical Affairs



Toni Testa
Technical Coordinator
Clinical Affairs

Two types of educational opportunities are offered by Dentsply Sirona Prosthetics. These include courses conducted at the Dentsply Sirona Educational Center in York, PA or Burlington, NJ, and external workshops sponsored by dental lab associations or other sponsors.



**Educational Center
York, PA**



**Educational Center
Burlington, NJ**

The Dentsply Sirona Educational Center

Our Educational Center provides individually appointed stations for participants. Complete with closed-circuit television, ethernet and video taping systems, the Educational Center provides an ideal setting for intensive instruction and personalized attention.

Courses scheduled at the Educational Center provide comprehensive training in removable and fixed prosthodontics.

Dentsply Sirona Workshop Programs

These programs were developed by Dentsply Sirona to make expert-level training available regionally through sponsoring lab associations or other groups.

Sponsoring organizations may request courses by contacting the Dentsply Sirona Prosthetics Laboratory Education and Technical Services Department. Class limits apply, so early registration is recommended.

REMOVABLE PROGRAM

Introduction To Basic Removable Procedures

3 Day Program – 8:00 A.M. to 4:30 P.M. in York, PA

Eclipse® Prosthetic Resin System

ENROLLMENT FEE: \$500.00



This three-day, “hands-on” course offers an opportunity to become familiar with a variety of materials and procedures that are used routinely in a denture laboratory. Each person will use Triad®, Eclipse, shellac and vacu-formed materials to construct custom impression trays and occlusion rims. An edentulous upper tooth arrangement and wax contour against existing lower dentition will be completed. Upper and lower wax-ups will be provided which will be flaked, processed and polished.

The laboratory or dental office sponsoring a person attending will receive a discount coupon redeemable for attendance at a future Dentsply Sirona denture program. Basic instruments and all supplies are furnished by Dentsply Sirona. Participants may bring their favorite waxing instruments or tools if desired. The IPN® teeth used during this program, along with cast/mountings, baseplates, portfolios, etc. become the property of each participant.

OBJECTIVES: Upon completion of this course, each attendee will:

1. Develop skills in using Triad and Eclipse light cured materials.
2. Properly use and understand several types of waxes.
3. Understand how to use TruRx®, the Digital Denture Prescription tool, for iPhone®, iPad® and Android™.
4. Understand anterior and posterior tooth positioning guidelines and tips.
5. Learn simplified wax contouring of the dentures.
6. Flask, process dentures using packing and injection techniques.
7. Finish and polish processed dentures.

TEACHING METHOD: Hands-on participation course utilizing a slide/lecture and demonstration format. Literature is provided to each participant for future reference of information provided.

2017 YORK SCHEDULE: March 6, 7, & 8, June 5, 6 & 7 and September 11, 12 & 13

LENGTH OF CLASSES: 8:00 A.M. TO 4:30 P.M.

INSTRUCTORS: Educational Center faculty members.

CREDIT HOURS: 24

iPhone®, iPad® and Android™ are not registered trademarks of Dentsply Sirona.

To Register: visit <https://www.dentsply.com/en-us/education/overview.html>

REMOVABLE PROGRAM

Removable Partial Dentures Made Easy

2 Day Program – 8:00 A.M. to 4:30 P.M. in York, PA

Vitallium®

Partial Denture Alloy

ENROLLMENT FEE: **\$350.00**



This two-day program will allow all participants to make a partial framework using the Vitallium System! From partial design to final polish everyone will learn the DO's and DON'T's of partial framework fabrication. You will learn about common mistakes, beliefs and techniques that can cause problems and how to eliminate them. Learn several "Little Secrets" that will make all your partial frameworks fit easier and look better.

OBJECTIVES: Upon completion of this course, each attendee will:

1. Learn about each component of the Vitallium system.
2. Learn how to trouble-shoot RPD problems.
3. Obtain tips to help improve fit of RPD frames.

TEACHING METHOD: The program will utilize video, hands-on and slides to take you through Survey & Design, Refractory Model Fabrication, Waxing and Investing and Casting and Finishing of 2 partial frameworks. All participants will fabricate an upper and lower Vitallium partial framework to take with them.

We recommend that all participants have experience with RPD fabrication and should bring their own instruments.

2017 YORK SCHEDULE: January 23 & 24, April 10 & 11, July 17 & 18 and October 2 & 3

LENGTH OF CLASSES: 8:00 A.M. TO 4:30 P.M.

INSTRUCTORS: Educational Center faculty members.

CREDIT HOURS: 16

To Register: visit <https://www.dentsply.com/en-us/education/overview.html>

REMOVABLE PROGRAM

2 Day Expanded Complete Denture Workshop

2 Day Program – 8:00 A.M. to 4:30 P.M. in York, PA

Portrait® IPN®

Denture Teeth



ENROLLMENT FEE: \$350.00

This two-day “hands-on” program concentrates on natural esthetic and functional concepts concerning anterior and posterior tooth arrangements. Truly natural personalized tooth arrangements are based on facial characteristics, oral landmarks, and factors of denture contour which benefit the patient. Slides of natural dentition are shown to illustrate and demonstrate the subtle differences nature employs between various face/arch/tooth forms and their relationship to functional tooth positions. Several of the factors governing establishment of balanced articulation will be covered, with suggestions for practical applications to improve articulation and subsequent functional benefits - A Plane of Orientation as well as specific anatomical landmarks for natural tooth position will be illustrated. Articulator settings necessary to achieve accurate bilateral working and balancing contact are discussed. A portion of the slide/lecture covers flat occlusal schemes for when a preference is indicated for that type of tooth arrangement.

Workshop participants learn simplified techniques used to easily set up complete upper and lower dentures utilizing 10°, 20° and 30° teeth in balanced occlusion and also a lingualized arrangement. Tips and techniques for fast, simplified wax contouring to simulate natural, life like gingival tissue will also be taught. A 1x28 of the artificial teeth employed during this program along with cast/mountings, baseplates, portfolios, etc. become the property of each participant.

OBJECTIVES: Upon completion of this course, each attendee will:

1. Understand how to use TruRx®, the Digital Denture Prescription tool, for iPhone®, iPad® and Android™.
2. Learn the various anterior tooth moulds and their arrangement in the arch.
3. Learn the various posterior tooth designs and the correct articulator settings needed to achieve bilateral balanced occlusion with Trubyte posterior teeth.
4. Learn the articulation and arrangement of various Trubyte Portrait Posteriors, as well as 33° over 22° in bilateral balanced or lingualized occlusion.
5. Learn personalized anterior set-up techniques based on facial characteristics, oral landmarks and factors of denture contours which benefit the patient.
6. Learn the subtle characteristics nature employs between various face/arch/tooth forms and their relationship to aesthetic functional tooth positions.

TEACHING METHOD: Hands-on participation course utilizing a slide/lecture and demonstration format. Literature is provided to each participant for future reference.

2017 YORK SCHEDULE: March 9 & 10, June 8 & 9 and September 14 & 15

LENGTH OF CLASSES: 8:00 A.M. TO 4:30 P.M.

INSTRUCTORS: Educational Center faculty members.

CREDIT HOURS: 16 [For additional one-day (8 credit hours) regional sites and dates, see website [prosthodontics.dentsply.com](https://www.dentsply.com)]

PREREQUISITE: Attendance of “Introduction to Basic Removable Procedures” course and some prior tooth set-up experience is highly recommended.

iPhone®, iPad® and Android™ are not registered trademarks of Dentsply Sirona.

To Register: visit <https://www.dentsply.com/en-us/education/overview.html>

REMOVABLE PROGRAM

Flexible Options for Removables Using FRS®/Thermoflex™

2 Day Program – 8:00 A.M. to 4:30 P.M. in York, PA

Lucitone® FRS®

Flexible Dental Resin

ENROLLMENT FEE: \$350.00



This two day “hands-on” course provides the attendee with the opportunity to become proficient in the use of Lucitone FRS using the Success Injection System. Lucitone FRS is a flexible, and monomer-free thermoplastic dental resin, which is indicated for temporary partial or small to medium size full removable dentures, clear and tissue shaded clasps, as well as occlusal splints and nightguards. This course will cover the fabrication of a metal-free Lucitone FRS partial form master model to finishing and polishing.

OBJECTIVES: Upon completion of this course, each attendee will:

1. Learn the benefits obtained with the precision injection.
2. Learn the indications for Lucitone FRS.
3. Survey and Design a flexible partial.
4. Duplicate model using Polyflex hydrocolloid.
5. Demonstrate correct clasp design, spruing technique, investing and finishing for flexible partial dentures.

TEACHING METHOD: Hands-on participation course utilizing a slide/lecture and demonstration format. Literature is provided to each participant for future reference of information provided.

2017 YORK SCHEDULE: March 20 & 21, June 19 & 20 and October 2 & 3

LENGTH OF CLASSES: 8:00 A.M. TO 4:30 P.M.

INSTRUCTORS: Educational Center faculty members.

CREDIT HOURS: 16

To Register: visit <https://www.dentsply.com/en-us/education/overview.html>

REMOVABLE PROGRAM

The Pour with More

1 Day Program – 8:00 A.M. to 4:30 P.M. in York, PA

Lucitone® HIPA

High Impact Pourable

Acrylic Denture Base



ENROLLMENT FEE: \$175.00

There is more pressure on labs than ever before. Expedited timelines and product constraints make it challenging to produce a quality product. For too long labs have been limited to a durable heat-cure acrylic that takes time to pack and cure, or a pour acrylic that is faster to make, but doesn't have high impact strength. What labs really need is a poured denture with heat-cured strength.

This self-cure denture base material is designed to fabricate, repair, rebase, or reline full and partial dentures including implant overdentures or other dental appliances. The system also includes the Lucitone® Intensive Colors, which will enable the technician to individually characterize a denture.

OBJECTIVES: Upon completion of this course, each attendee will:

1. Learn the process of fabricating a denture from flasking, processing and finishing a denture using Lucitone HIPA.
2. Learn how using Lucitone HIPA can speed up your production in your laboratory while still offering a quality denture.
3. Learn how to use Lucitone Intensive Colors to individually characterize your dentures.
4. Be shown a brief overview of repair, rebase and relining with Lucitone HIPA.
5. Become aware of benefits of the materials such as; strength properties, color stability, and ease of use.

TEACHING METHOD: Hands-on participation course utilizing a slide/lecture and demonstration format. Literature is provided to each participant for future reference of information provided.

2017 YORK SCHEDULE: Contact Toni Testa @
1-800-243-1942 ext. 56040

LENGTH OF CLASSES: 8:30 A.M. TO 5:00 P.M.

INSTRUCTORS: Educational Center faculty members.

CREDIT HOURS: 8

To Register: visit <https://www.dentsply.com/en-us/education/overview.html>

FIXED PROGRAM

The Next Generation Provisional System - Radica®

1 day Program – 8:30 A.M. to 5:00 P.M. in Burlington, NJ

Radica®

Provisional and Diagnostic Resin

ENROLLMENT FEE: **\$175.00**



Photograph courtesy of: Functional Esthetics, Farmington, MO
Restoration designed by: Douglas J. Frye C.D.T.

This one-day, “hands-on” course offers the participant the opportunity to become familiar with the next generation of provisional restorative material, Radica. Subjects that will be covered are: indications for use, model prep and analysis, material handling, equipment usage, curing and finishing techniques.

Participants should bring their favorite porcelain/waxing instruments and finishing stones/burs.

The models and all fabricated restorations used during this program become the property of each participant.

OBJECTIVES: Upon completion of this course, each attendee will:

1. Understand the indications for use of provisional restorative materials.
2. Understand steps in creating a provisional restoration.
3. Develop skills in model preparations, material handling, curing and finishing techniques for Radica restorations.
4. Fabricate provisional restorations.

TEACHING METHOD: Hands-on course utilizing a slide/lecture and demonstration format. Literature is provided to each participant for future reference of information provided.

Recommended Experience: 3 - 6 months waxing.

2017 BURLINGTON SCHEDULE: Contact Toni Testa @
1-800-243-1942 ext. 56040

LENGTH OF CLASSES: 8:30 A.M. TO 5:00 P.M.

INSTRUCTORS: Educational Center faculty members.

CREDIT HOURS: 8

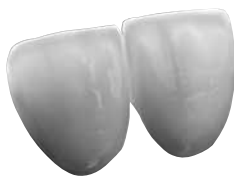
To Register: visit <https://www.dentsply.com/en-us/education/overview.html>

FIXED PROGRAM

The Ceramco® iC Integrated Solution

2 day Program – 8:30 A.M. to 5:00 P.M. in Burlington, NJ

Ceramco® iC Integrated Ceramics



ENROLLMENT FEE: \$350.00

This two-day hands-on program will cover the Ceramco iC Integrated Porcelain System and its applications. The course will discuss the processes involved in the production of porcelain-fused-to-metal, all-ceramic, and press-to-metal applications with the iC Integrated Porcelain System. Applications include one-coat opaques for PFM and press-to-metal structures, pressing all-ceramic units, and press-to-metal units with a one ingot system using the iC porcelain system to complete each of these processes. Subjects that will be covered are: Porcelain color systems, creative techniques for the use of internal dentin modifiers and staining, along with techniques in surface texturing.

OBJECTIVES: Upon completion of this course, each attendee will:

1. Understand basic pressing terminology.
2. Understand the steps to proper framework design for pressed-to-metal restorations.
3. Learn simplified waxing techniques.
4. Develop skills on full contour waxing, pressing, and staining ceramic restorations.
5. Fabricate all-ceramic, porcelain-fused-to-metal, and press-to-metal restorations.

TEACHING METHOD: Hands-on course utilizing a slide/lecture and demonstration format. Literature is provided to each participant for future reference of information provided.

Recommended Experience: 3-6 months waxing with the ability to wax full contour restorations.

**2017 BURLINGTON SCHEDULE: Contact Toni Testa @
1-800-243-1942 ext. 56040**

LENGTH OF CLASSES: 8:30 A.M. TO 5:00 P.M.

INSTRUCTORS: Educational Center faculty members.

CREDIT HOURS: 16

To Register: visit <https://www.dentsply.com/en-us/education/overview.html>

FIXED PROGRAM

Fundamentals of Dental Ceramics

2 day Program – 8:30 A.M. to 5:00 P.M. in Burlington, NJ

Ceramco® 3

Porcelain System



ENROLLMENT FEE: \$350.00

This two-day, “hands-on” course will provide the beginning ceramist with the information and skills to be a productive member of the ceramic department. Upon completion, the technician will understand and be able to complete all steps involved in a porcelain-fused-to-metal restoration. Subjects that will be covered include: model and die work, ceramic framework design, waxing, spruing, investing, casting, metal preparation, and start-to-finish of the porcelain build-up. Also covered will be alloy selection and ceramic materials composition. Participants should bring their favorite porcelain/waxing instruments and finishing stones/burs.

The models and all fabricated restorations used during this program become the property of each participant.

OBJECTIVES: Upon completion of this course, each attendee will:

1. Understand basic tooth anatomy and morphology.
2. Understand the steps and importance of model/die work through the full process to the metal preparation phase.
3. Properly identify and correct common problems associated that occur in the fabrication of porcelain-fused-to-metal restorations.
4. Learn simplified porcelain application techniques to acquire a desired shade.
5. Fabricate porcelain restorations.

TEACHING METHOD: Hands-on course utilizing a slide/lecture and demonstration format. Literature is provided to each participant for future reference of information provided.

Recommended Experience: 0-2 years in ceramics.

2017 BURLINGTON SCHEDULE: January 23 & 24, April 24 & 25, July 24 & 25 and October 23 & 24

LENGTH OF CLASSES: 8:30 A.M. TO 5:00 P.M.

INSTRUCTORS: Educational Center faculty members.

CREDIT HOURS: 16

To Register: visit <https://www.dentsply.com/en-us/education/overview.html>

FIXED PROGRAM

Creative Ceramics

2 day Program – 8:30 A.M. to 5:00 P.M. in Burlington, NJ

Ceramco® PFZ

Porcelain for Zirconia



ENROLLMENT FEE: \$350.00

This two-day, “hands-on” program will cover the ability to accurately match natural dentition. This course discusses the shade taking processes and communication between dentist and technicians and relating that information to achieve an esthetic porcelain-fused-to-metal. Subjects that will be covered are: porcelain color systems, creative techniques for the use of internal dentin modifiers and staining, along with techniques in surface texturing.

Participants should bring their favorite porcelain/ waxing instruments and finishing stones/burs.

The models and all fabricated restorations used during this program become the property of each participant.

OBJECTIVES: Upon completion of this course, each attendee will:

1. Understand light characteristics and shading processes.
2. Learn to avoid common errors in shade taking.
3. Learn techniques in communication.
4. Develop creative skills using effect porcelains to imitate natural dentition.
5. Fabricate porcelain-fused-to-metal and porcelain-fused-to-zirconia restorations with internal modifications.

TEACHING METHOD: Hands-on course utilizing a slide/lecture and demonstration format. Literature is provided to each participant for future reference of information provided.

Recommended Experience: 4 years in ceramics.

2017 BURLINGTON SCHEDULE: March 13 & 14, June 12 & 13, September 11 & 12 and December 4 & 5

LENGTH OF CLASSES: 8:30 A.M. TO 5:00 P.M.

INSTRUCTORS: Educational Center faculty members.

CREDIT HOURS: 16

To Register: visit <https://www.dentsply.com/en-us/education/overview.html>

FIXED PROGRAM

Ceramco ALL-Ceramic Systems - Ceramco® PFZ or Cercon® Ceram Kiss, Cercon® HT Shaded Zirconia

1 day Program – 8:30 A.M. to 5:00 P.M. in
Burlington, NJ



ENROLLMENT FEE: \$175.00

This is a one day “hands-on” course that will allow you to understand the use of Cercon Shaded HT Zirconia’s use as a monolithic restoration and as a veneered restoration. The ceramic system featured will be Ceramco PFZ (Porcelain Fused to Zirconia) or Degudent’ s Cercon Ceram Kiss zirconia porcelain systems that allow individuals to achieve natural aesthetics during its use. Celtra Stain & Glaze system will be used for each of the restorations built as a monolithic crown and a shaded zirconia substructure - veneered restoration.

Participants should bring their favorite porcelain instruments and finishing stones/burs.

The models and all fabricated restorations used during the program become the property of each participant.

OBJECTIVES: Upon completion of this course, each attendee will:

1. Understand the uses of Cercon Shaded HT.
2. Learn esthetic effects with the ceramic systems use.
3. Learn to avoid common mistakes when monolithic restorations are constructed.
4. Learn important material communication between the Lab and Dentist.
5. Learn about Celtra Duo restorations.

TEACHING METHOD: Hands-on course utilizing slide/lecture and demonstration format. Literature is provided for each participant for future reference.

Recommended Experience: 3 years in ceramics.

**2017 BURLINGTON SCHEDULE: January 30, March 27, August 28
and November 27**

LENGTH OF CLASSES: 8:30 A.M. TO 5:00 P.M.

INSTRUCTORS: Educational Center faculty members.

CREDIT HOURS: 8

To Register: visit <https://www.dentsply.com/en-us/education/overview.html>

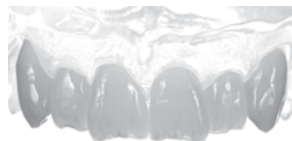
FIXED PROGRAM

Celtra Press the New Generation of High Strength Glass Ceramics, Zirconia Reinforced Lithium Silicate ZLS

2 day Program – 8:30 A.M. to 5:00 P.M. in Burlington, NJ

Celtra® Press

Zirconia Reinforced Lithium Silicate



ENROLLMENT FEE: \$350.00

This two-day hands-on program will cover Celtra Press & Celtra Ceram Porcelain System and its applications. The course will discuss the processes involved in the production of Celtra Press ingots, by showing the ease of spruing, pressing, divesting and completion of this highly esthetic Opalescent material with the use of Celtra Ceram porcelain plus DS Universal Stains & Glaze. Subjects that will be covered are: Celtra Press ingot systems, creative techniques in the use of Celtra Ceram and the use of internal effects and staining with Dentsply Sirona Universal Stains & Glaze, along with techniques in surface texturing.

OBJECTIVES: Upon completion of this course, each attendee will:

1. Understand basic pressing processing & terminology.
2. Understand the steps to proper framework design for pressed zirconia reinforced lithium silicate restorations.
3. Develop skills on full contour waxing, pressing, and staining ceramic restorations.
4. Fabricate monolithic and veneered all-ceramic lithium silicate restorations.

TEACHING METHOD: Hands-On utilizing a powerpoint/lecture and demonstration format. Literature is provided to each participant for future reference of information provided.

Recommended Experience: 3-6 months waxing, pressing & ceramic full contour restorations

2017 BURLINGTON SCHEDULE: January 16 & 17, March 6 & 7, May 1 & 2, July 17 & 18, September 18 & 19 and December 11 & 12

LENGTH OF CLASSES: 8:30 A.M. TO 5:00 P.M.

INSTRUCTORS: Educational Center faculty members.

CREDIT HOURS: 16

To Register: visit <https://www.dentsply.com/en-us/education/overview.html>

