

# If longevity matters – so should marginal bone



## Astra Tech Implant System® EV and Atlantis®

Made for each other by Dentsply Sirona, a great collaboration from two solutions provides an exceptional service for your patients – from start to finish. Unrivalled bone preservation ensures long-term function and esthetics. This improves the patient experience, as well as avoids costly repairs and maintenance.

“Working with Astra Tech Implant System, I have never failed to be impressed by the overall maintenance in marginal bone levels over the long term, by which I mean over 25 years. The Astra Tech Implant EV continues this success.” **Dr. Michael Norton**



# Blend beauty with logic

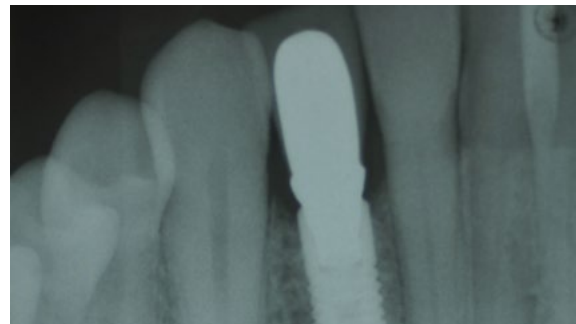
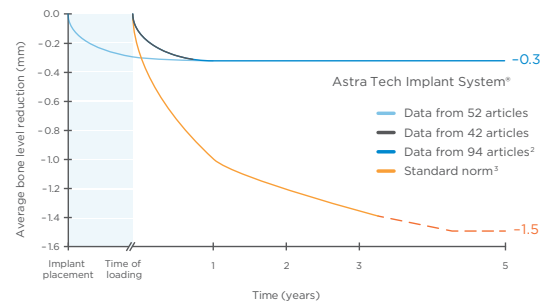
With Atlantis, you get the artistry of patient-specific restorative work. Together with Astra Tech Implant System EV and its unsurpassed maintenance of bone – 98% survival rate<sup>1</sup> and minimal 0.3 mm bone loss over 10 years – you can restore your patient’s confidence for life.



## Predictability from a streamlined workflow

Astra Tech Implant System EV is uniquely designed for efficient and streamlined handling throughout the treatment chain. It enables convenient one-position-only placement of Atlantis abutments, self-guiding impression components and a digital workflow.

Marginal bone maintenance with Astra Tech Implant System®



## 360° bone preservation and soft tissue support

Astra Tech Implant System EV maximizes the existing bone, resulting in optimal esthetics with less treatment time.



<p>Patient care</p> <p><b>100+</b> years</p>	<p>Astra Tech Implant System EV</p> <p><b>35</b> years</p>	<p>Atlantis abutments</p> <p><b>3.5</b> million</p>
--	--	---

1. Windael S, Vervaeke S, Wijnen L, et al. Ten-year follow-up of dental implants used for immediate loading in the edentulous mandible: A prospective clinical study. Clin Implant Dent Relat Res 2018;20(4):515-21.

2. Astra Tech Implant System level based on data from 94 articles (published in English, peer-reviewed journals) presenting radiological data on study cohorts of no less than 10 patients receiving standard surgical procedures and followed for minimum 1 year after loading. Literature search January 2019.

3. Standard norm (less than 1 mm bone loss during the first year of loading and less than 0.2 mm annually thereafter, to level out at approximately -1.5 mm after 5 years of loading) according to: Albrektsson T. et al., Int J Oral Maxillofac Implants 1986;1(1):11-25, Albrektsson T. and Zarb GA., Int J Prosthodont 1993;6(2):95-105, Roos J. et al., Int J Oral Maxillofac Implants 1997;12(4):504-514.

Case images courtesy of Dr. Fernando Rojas-Vizcaya, DDS, MS

[www.dentsplysirona.com/implants](http://www.dentsplysirona.com/implants)