

CASE REPORT



Dr. Eszter Machó
DreamDent Clinic
Győr, Hungary

X-smart IQ - the intelligent partner

The patient complained of a strong bite sensitivity and pain in the lower jaw, which radiated to the ear. The intraoral imaging diagnostics (pic. 7) and the mouth test made it clear that the gangrene of 36 teeth, the visible striking lesion was also on the buccal side of the tooth: a fistula, which was more distinctly positioned from the tooth and emptied at mild pressure (pic. 1). In 36 teeth I found a large OD, well closing composite filling (pic. 2).

After minimal invasive trepanization, pus from the ducts was not empty. I have started the machining the slightly curved root canals of apicalis with Proglider. During the rinsing protocol, I used NaOCl at concentrations of 5.25 % (Chlorax) and NaCl at 0.9 % concentrations (pic. 4). After rinsing NaOCl, the channels have been grated. Mechanical machining was done until ProTaper Next X3, there was no complication. Due to the high degree of lesion and suppuration in the 2D PA recording, I closed the root canals with Ca(OH)₂, the tooth was closed with IRM.

After 4 weeks, the patient became complaint-free, the fistula was removed.

During the next session, I removed the temporary paste from the root canals in a kemomechanical manner and then, after drying, I checked the working length with Propex IQ (pic. 3, pic. 5).

I performed obturation with lateral condensation. In all three channels ISO 25 is the master guttapercha, as a sealer I used AH Plus. Finally, I used a plugger vertical condensation (pic. 6). As a temporary solution, I closed the cavity with IRM and did a control x-ray (pic. 8).

The control x-ray shows that a small amount of apex-passed root filling material in the apical area of the mesial roots can be seen and the root filling may appear



to be about 1 mm shorter. The decrease in density around apex shown in the preop PA x-ray was greatly reduced, suggesting healing of the inflammatory process (pic. 9).

My daily endodontic treatment is greatly supported and facilitated by Dentsply Sirona's asset park. Intego's ergonomics make treatment ideal for the team and the patient. The X-smart IQ and Propex IQ are harmonic, fast and precise collaboration with the dentist's real partner even in the most difficult cases during treatments. Radiological diagnostics were provided by Vario DG* intraoral X-ray and Xios XG sensor.

* Equipment model replaced in Dentsply Sirona's offer by Heliodont Plus.



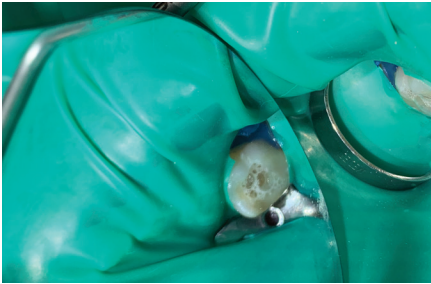
1. 36 tooth pre-op image, well-closed restoration



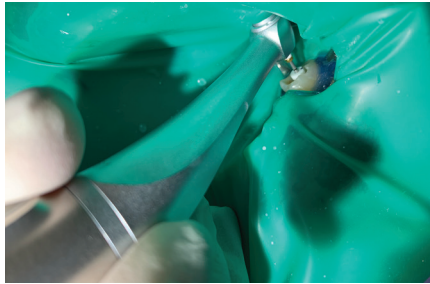
2. Buccally in the area of gingiva propria, more distally from the tooth pus is leaving the fistula



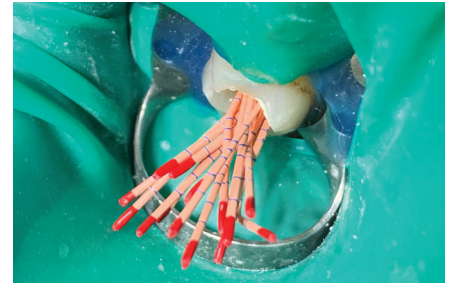
3. Determination of working length, average anatomy - D: 19 mm, MB: 20 mm, ML: 22 mm (Dentsply Sirona Endodontics K-file 10)



4. NaOCl + EDTA work in progress



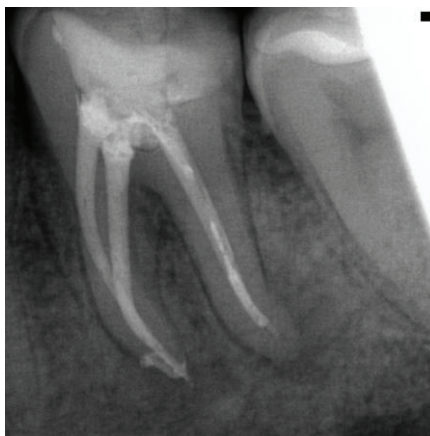
5. Proglider is "breaking" the path



6. Guttapercha forest



7. Pre-op IO image



8. Post-op IO Image



9. Post-op control IO Image