

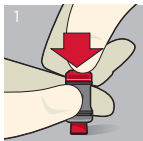


Surefil one™

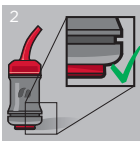
Self-Adhesive Composite Hybrid



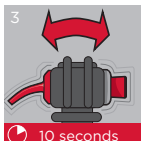
01:30 Minutes Working Time



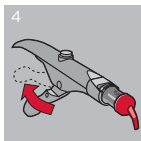
1
Activate by pressing capsule onto a stable surface.



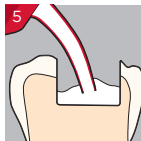
2
Activated capsule.



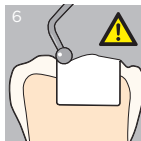
3
Immediately place the activated capsule in a capsule mixer (4200-4600 osc./min.) and mix for 10 seconds.



4
Place capsule into the extruder and extrude paste until seen through nozzle.



5
Start dispensing at deepest part of the cavity. Keep nozzle in the material while moving to all areas of the cavity.



6
Slightly overfill and contour. **Do not manipulate after end of Working Time** (1 minute 30 seconds after activation).

Shades: Bleach White A1 A2 A3 A3,5



Caution, consult directions for use



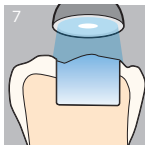


Surefil one™

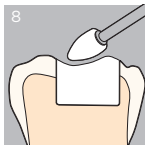
Self-Adhesive Composite Hybrid



www.dentsplysirona.com
© 2019 Dentsply Sirona, Inc.



Light cure the surface layer **for 20 seconds**. The material in the depth of the cavity will self cure within 6 minutes after capsule activation.



Contour, finish, and polish while **keeping surface moist**.



Remove matrix band not before end of setting time (**6 minutes after capsule activation**).

Time after activation of capsule (According to ISO 9917-2)

Working Time (at room temperature)	2 minutes
Setting Time (at 37°C)	3 minutes 30 seconds

Typical clinical protocol

Mixing (capsule)	10 seconds
Working Time (at 30°C)	1 minute 30 seconds
Light curing of surface layer	20 seconds ≥ 800 mW/cm ²
Setting Time (at 30°C)	6 Minutes (from activation)

Farben: **Cyan** **Magenta** **Gelb** **Schwarz**
RES-Surefil-one-ITG-EN-K100825-F.indd 2



Format: 80 x 150 mm breit

28.01.2019 12:04:21

K100825-00